

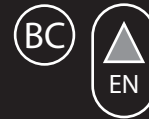
Date Code Label
Here

Owner's Manual Battery Ride-On Scooter

This manual contains important safety, assembly, operation and maintenance information.

Please read and fully understand this manual before operation.

Save this manual for future reference.



HUFFY

H-Tri_STOP-Global_022217_i0388



See back page for Customer Service Information
Consulte el reverso para Servicio de Información al Cliente
Voir pages verso pour des renseignements le service à la Clientèle

[In the US]

**PLEASE - BEFORE RETURNING TO STORE,
CONTACT HUFFY CUSTOMER SERVICE. WE
ARE GLAD TO ASSIST YOU WITH ANY PARTS
OR ASSEMBLY PROBLEMS YOU MIGHT
HAVE!**

For Fast Customer Service, go to:

<http://www.huffybikes.com/contact>

To Order Parts (US only), go to:

<http://www.huffybikes.com/parts>

OR TEL: 1 800 872 2453 (US only)

For email, go to <http://www.huffybikes.com/contact>

[MÉXICO]

**ANTES DE DEVOLVER EL
PRODUCTO A LA TIENDA,
COMUNÍQUESE CON SERVICIO
AL CLIENTE DE HUFFY. NOS
COMPLACE AYUDARLO CON
CUALQUIER PARTE O PROBLEMA
DE ENSAMBLADO QUE PUDIERA
TENER.**

Para obtener Servicio al cliente rápido, visite:

<http://www.huffybikes.com/>

O LLAME AL TEL: 01800 1483 391

(Mexico only)

Para comunicarse por correo electrónico:

servicio@huffymex.com



[CANADA]

**VEUILLEZ NOTER : AVANT DE
RETOURNER AU MAGASIN,
COMMUNIQUEZ AVEC LE SERVICE
À LA CLIENTÈLE DE HUFFY. NOUS
VOUS AIDERONS VOLONTIERS AVEC
TOUT PROBLÈME CONCERNANT LES
PIÈCES OU LE MONTAGE!**

Pour un Service à la clientèle rapide, allez sur le
site :

<http://www.huffybikes.com/contact>

To Order Parts (CANADA only), go to:

<http://www.huffybikes.com/parts>

OU appelez le 1 800 872 2453

(CANADA only)

Pour communiquer par courriel

huffycanada@huffy.com

Check <http://www.huffybikes.com/home/globalcontact>
for the current contact information

<http://www.huffybikes.com/home/globalcontact>
para obtener la información de contacto actual

Vérifier <http://www.huffybikes.com/home/globalcontact>
pour les informations de contact actuelles

Owner's Manual Index

Safety

- User and Battery Warnings.....3-4
- Charging Drive Motor Warnings.....5

Assembly

- Parts Assembly.....6-7
- Introduction to Assembly and Tools Needed.....8
- Charging Port Location.....8
- **Vehicle Assembly.....9-11**

Operation

- How to Operate your Vehicle.....12

Maintenance Repair and Service

- General.....13
- Battery Replacement.....14
- Drive Motor and Battery Fuse.....15
- Battery Recharge Time.....15

Troubleshooting.....16-17

- Lubrication.....17
- Battery Storage and Disposal.....18
- Radio Frequency.....18

Warranty

- Limited Warranty.....19


Contact Information - Back Cover

WARNING: CHOKING HAZARD:

- Small parts, adult assembly required.
- To reduce the risk of injury, adult supervision is required.
- Never use in roadways, near motor vehicles, on or near steep inclines or steps, swimming pools or other bodies of water; always wear shoes, and never allow more than one rider.
- The user must be **8+ years**, and weigh no more than **150 lbs (68kgs)**.

The normal powered top speed of this scooter is approximately **8 mph (12.9 kph)**. Speed can be affected by rider weight, inclines and battery charge level. Avoid excessive speeds particularly on inclines.

Drive system specs – Gear drive, 12V 60W DC Motor - **No Serviceable Parts.**

 **CHARGE BATTERY BEFORE USE!** Before using the unit for the first time the battery needs to be charged for at least **8 to 12 hours** - no more than **20 hours**.

Limited Warranty

General:

- Part or model specifications are subject to change without notice.
- This Limited Warranty is the only warranty for the product. There are no other express warranties.
- The only uses for this product are described in this manual.
- Warranty registration is not required.
- The Limited Warranty extends only to the original consumer and is not transferable to anyone else.

What does this Limited Warranty cover?

This Limited Warranty covers all parts of the product except those indicated below as not warranted.

What must you do to keep the Limited Warranty in effect?

This Limited Warranty is effective only if:

- Product is completely and correctly assembled.
- Product is used under normal conditions for its intended purpose (see the following section for excluded activities).
- Product receives all necessary maintenance and adjustments.
- Product is used for general transportation and recreational use only.

What is not covered by this Limited Warranty?

This product is designed for recreational use only. This Limited Warranty does not cover normal wear and tear, normal maintenance items, or any damage, failure, or loss that is caused by improper assembly, maintenance, adjustment, storage, or use of the product.

This Limited Warranty will be void if the product is ever:

- Used in any competitive sport
- Used for stunt riding, jumping, aerobatics or similar activity
- Modified in any way
- Modified with the addition of a motor
- Ridden by more than one person at a time
- Rented, sold, or given away

- Used in a manner contrary to the instructions and warnings in this Owner's Manual

Huffy will not be liable for incidental or consequential loss or damage due directly or indirectly from use of this product. Some States do not allow the exclusion or limitation of incidental or consequential damages, so the above limitation may not apply to you.

What will Huffy do?

Huffy will replace, without charge to you, any part, or component found to be defective by Huffy.

How do you get service?

Contact the Customer Service Department.

- See included list for Customer Contact information or visit www.huffybikes.com/ contact.

What rights do you have?

This warranty gives you specific legal rights. You may also have other rights which vary from State to State.

For how long does this Limited Warranty last?

- Drive Battery - 30 days
- Electronics - 90 days
- All other Components - 6 months

This product meets ASTM F963 and CPSIA requirements for electric vehicles.

Battery Storage and Disposal

The drive battery should be charged when depleted, or if not used regularly, once a month. Failure to charge the battery as directed will cause permanent damage to the battery and will void the warranty.

Follow these guidelines if the battery is removed:

- Do not store battery in extreme hot or cold temperatures.
- Wipe the battery clean with a dry cloth prior to storage. Wash cloth separate from other clothes.

BATTERY DISPOSAL:

- The sealed lead-acid battery must be re-

cycled or disposed of in an environmentally sound manner.

- Do not dispose of battery in a fire. The battery may explode or leak acid.
- Do not dispose of the battery in household trash. The incineration, land filling or mixing of sealed lead-acid batteries with household trash is prohibited by law.
- Return an exhausted battery to a federal or state approved lead-acid battery recycler, such as a local seller of automotive batteries (check local battery disposal regulations).

Radio Frequency Information (charger/adaptor)

CAUTION: Changes or modifications to this unit not expressly approved by the party responsible for compliance could void the user's authority to operate the equipment.

This device (charger/adaptor) complies with Part 15 of the FCC Rules. Operation is subject to the following two conditions:

- (1) this device may not cause harmful interference, and
- (2) this device must accept any interference received, including interference that may cause undesired operation.

NOTE: This equipment has been tested and found to comply with the limits for a Class B digital device, pursuant to Part 15 of the FCC Rules. These limits are designed to provide reasonable protection against harmful interference in a residential installation. This equipment generates, uses and can radiate

radio frequency energy and, if not installed and used in accordance with the instructions, may cause harmful interference to radio communications.

However, there is no guarantee that interference will not occur in a particular installation. If this equipment does cause harmful interference to radio or television reception, which can be determined by turning the equipment off and on, the user is encouraged to try to correct the interference by one or more of the following measures:

- Reorient or relocate the receiving antenna.
- Increase the separation between the equipment and receiver.
- Connect the equipment into an outlet on a circuit different from that to which the receiver is connected.
- Consult the dealer or an experienced radio/TV technician for help.



WARNINGS

All of these safety rules and guidelines must be followed or serious injury or death may occur to the user. Keep this product away from small children.

- **Adult assembly required.** Choking hazard to children under the age of 3 years - contains small parts. Keep small children away when assembling.
- **To reduce the risk of injury, adult supervision is required. Never use in roadways, near motor vehicles, on or near steep inclines or steps, swimming pools or other bodies of water; always wear shoes, and never allow more than one (1) rider.**
- **RISK OF FIRE. Do not bypass fuse. Replace only with size and type.**
- Unit shall not be modified from original design and configuration.
- Unit shall not be operated to perform racing, stunt riding, or other maneuvers, which may cause loss of control, or may cause uncontrolled operator/passenger actions or reactions.
- Do not allow hands, feet, hair, body parts, clothing, or similar articles to come in contact with moving parts, wheels, or drivetrain, while the engine is running.
- Body parts such as hands, legs, hair and clothing can get caught in moving parts. Never place a body part near a moving part or wear loose clothing while using the vehicle.
- Always use vehicle in a safe, secure environment on flat, smooth paved surfaces only.
- **Do not use the vehicle in an unsafe manner or at an unsafe speed.**
Examples include but are not limited to:
 - Do not pull or push the vehicle with another vehicle or similar device.
 - Do not tow anything behind the vehicle.
 - Do not drive into fixed objects, which may cause the wheels to spin, causing the motor to overheat.
 - Never use near streets, water, swimming pools, hills, steps, drop-offs, sloped surfaces or driveways, wet areas, flammable vapors, in alleys, at night or in the dark.
 - Do not use the vehicle in unsafe conditions such as snow, rain, loose dirt, mud sand or

fine gravel. This may result in unexpected action such as tip over and skidding. Using the vehicle in loose dirt, mud, sand, or fine gravel may damage the electronics and gear box inside the vehicle.

- **Vehicle Cautions:** Do not overload the vehicle. Do not drive in very hot weather, components may overheat. Do not allow water or other liquids to come in contact with the battery or other electric components. Do not tamper with the electrical system. Doing so may create a short, causing the fuse to trip or other damage including fire.
 - **Foot/Fender Brake can become hot after use. Do Not touch with hand.**
 - **Before each cycle of operation, the operator must perform the pre-operation checks including the following items:**
 - Check that any guards and pads originally supplied are in proper place and in serviceable condition.
 - Ensure that the area that the unit is to be operated in is safe and suitable for safe operation;
 - Ensure that the braking system is functioning properly;
 - Ensure that all safety labels are in place and understood by the operator and any passenger;
 - Ensure that any and all axle guards, chain guards, or other covers or guards supplied by the manufacturer are in place and in serviceable condition;
 - Ensure that tires are in good condition, inflated properly, and have sufficient tread remaining.
- Before using the vehicle the user must understand the controls and safety issues. They must also demonstrate the capability and skill to handle the vehicle and operate its controls to avoid falls or collisions. It is the responsibility of the adult to educate the child and determine if they are capable of operating the vehicle safely and that safe practices are used when using the vehicle.
- **Operators shall adhere to all recommenda-**



WARNINGS - continued

tions and instructions, as well as comply with all laws and ordinances:

- Units without headlights shall be operated only with adequate daylight conditions of visibility;
- Owners are encouraged to highlight (for conspicuity) using lighting, reflectors, and for low-riding units, signal flags on flexible poles.
- **Persons with the following conditions shall be cautioned not to operate the unit:**
 - Those with heart conditions;
 - Pregnant women;
 - Persons with head, back, or neck ailments, or prior surgeries to those areas of the body;
 - Persons with any mental or physical conditions that may make them susceptible to injury or impair their physical dexterity or mental capabilities to recognize, understand, and perform all of the safety instructions and to be able to assume the hazards inherent in unit use.
- Operators shall always use appropriate protective clothing, including but not limited to a helmet, with appropriate certification.
- Components shall be maintained and repaired in accordance with this manual and use only authorized replacement parts with installation performed by dealers or other skilled persons.
- Avoid sharp bumps, drainage grates, and sudden surface changes.
- Avoid streets and surfaces with water, sand, gravel, dirt, leaves, and other debris. Wet weather impairs traction, braking, and visibility.

Additional Safety Warnings:

- It is the responsibility of the adult to educate the child and determine if they are capable of operating the vehicle safely.
- Before using the vehicle the child must understand the controls and safety issues. They must also demonstrate the capability and skill to handle the vehicle and operate its controls to avoid falls or collisions.
- After complete assembly, remove and dispose of all protective material and poly bags. Keep poly bags away from child. Be sure to remove all packaging materials and parts from underneath the vehicle body.
- Ensure child uses common sense and safe practices when using the vehicle.
- An adult must unfold and fold this product (as equipped).



HELMET WARNING:

ALWAYS WEAR YOUR HELMET WHEN RIDING THIS PRODUCT!

Troubleshooting Guide - continued

Problem	Possible Cause	Solution
Loud grinding or clicking noises coming from motor or gear box	Motor or gears are damaged	Call Customer Service.
	Drive Wheel is partially engaged	Check drive wheel - to motor engagement.
Battery will not recharge	Battery connector or adapter connector is loose	Check that the battery connectors are firmly plugged into each other.
	Charger not plugged in	
	Charger is not working	Check that the battery charger is plugged into a working wall outlet.
Charger feels warm when recharging	Battery is dead	Replace battery.
	This is normal and not a cause for concern	If excessively hot, unplug and replace.

Lubrication



WARNING:

- If oil gets on rear wheel, it will reduce Fender/Brake performance and a longer distance to stop will be necessary. Injury to the rider or to others can occur.
- Keep all oil off the surfaces where your feet rest.
- Using soap and hot water, wash all oil off the wheels, Fenders, and the tires.
- Rinse with clean water and dry completely before you ride.

LUBRICATION POINTS: NO LUBRICATION IS REQUIRED.

Troubleshooting Guide

The following are examples of potential problems. Completely read through this manual and the troubleshooting guide table before calling. If you still need help resolving the problem please contact Customer Service.

NOTE: Vehicle should be turned off and fully charged before doing troubleshooting.

Problem	Possible Cause	Solution
Vehicle does not run	Battery low on power	Recharge battery (see Battery: Recharge interval and time)
	Thermal fuse has tripped	Let Fuse reset
	Battery connector or wires are loose	Check that the battery connectors are firmly plugged into each other. If wires are loose around the motor call Customer Service.
	Battery is dead	Replace battery (see Battery: Replacement and Disposal)
	Electrical system or motor is damaged	Call Customer Service.
Vehicle does not run very long	Battery is undercharged.	Check that the battery connectors are firmly plugged into each other when recharging (see Battery: Recharge interval and Time)
	Battery is old and cannot be fully charged	Replace battery (see Battery: Replacement and Disposal)
Vehicle runs sluggishly	Battery low on power	Recharge battery (see Battery: Replacement and Disposal)
	Battery is old and cannot be fully charged	Replace battery (see Battery: Replacement and Disposal)
	Vehicle is overloaded	Reduce weight on vehicle (see user requirements and Safety Warnings)
	Vehicle is being used in harsh conditions	Avoid using vehicle in harsh conditions (see User Requirements and Safety Warnings)
Vehicle makes loud noise when in use	Chain is dry (on chain drive models)	Lubricate chain with light oil.
Vehicle will not run when Switch is pressed.	Poor contact of wires or connectors	Check that the battery connectors are firmly plugged into each other. If wires are loose around the motor call Customer Service.
	"Dead Spot" on motor	A dead spot means the electric power is not being delivered to the terminal connection and the vehicle needs repair. Call Customer Service.

WARNING - Charging the Drive Motor Battery

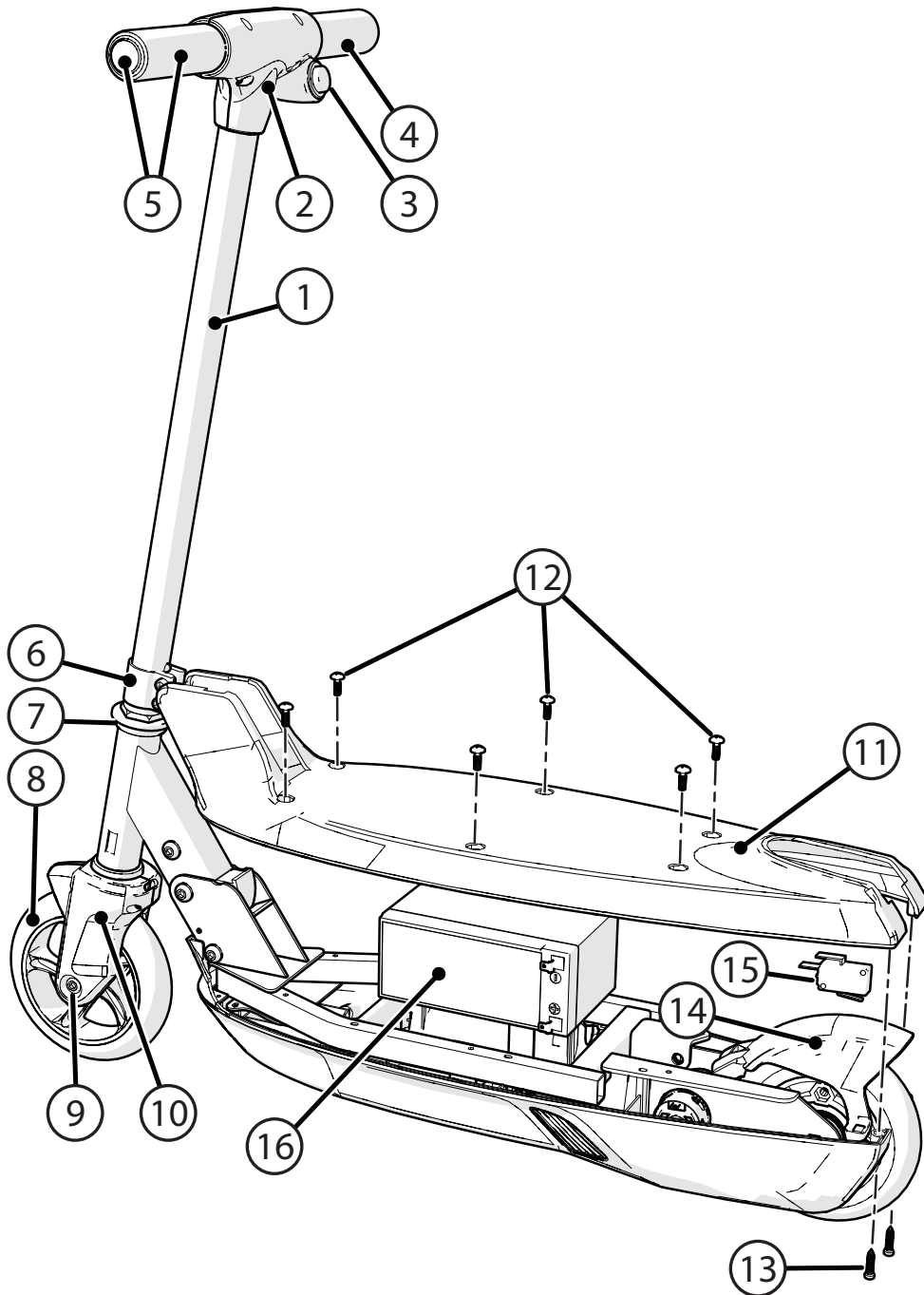
The following safety hazards may result in serious injury or death to the user of the vehicle:



- Use of a battery or charger other than the supplied rechargeable battery and charger may cause a fire or explosion. Only use the supplied rechargeable battery (or suitable replacement) and charger with the vehicle.
- Using the rechargeable battery and charger for any other product may result in overheating, fire or explosion. Never use the rechargeable battery and charger with another product.
- Explosion. Gases are created during charging. Charge the battery in a well ventilated area. Do not charge the battery near heat or flammable materials.
- Contact between the positive and negative terminals may result in fire or explosion. Avoid direct contact between the terminals. Picking up the battery by the wires or charger can cause damage to the battery and may result in a fire. Always pick up the battery by its case or handles.
- Battery must be handled by adults only. Liquids on the battery may cause fire or electric shock. Always keep all liquids away from the battery and keep the battery dry.
- Contact or exposure to battery leakage (lead acid) may cause serious injury. If contact or exposure occurs immediately call your physician. If the chemical is on the skin or in the eyes, flush with cool water for 15 minutes. If the chemical was swallowed, immediately give the person water or milk. Do not give water or milk if the patient is vomiting or has a decreased level of alertness. Do not induce vomiting.
- Battery Posts, terminals and related accessories contain lead and lead compounds (acid), chemicals known to cause cancer, reproductive harm and are toxic and corrosive. Never open the battery.
- Tampering or modifying the electric circuit system may cause a shock, fire or explosion and permanently damage the system. Exposed wiring and circuitry in the charger may cause electric shock. Always keep the charger housing closed.

Important! Before using the unit for the first time the battery needs to be charged for **8 to 12 hours - never longer than 20 hours**, Only an adult who has read and understands the safety warnings should handle, charge or recharge of the battery (see Maintenance).

NOTE: It is not necessary to remove the battery from the vehicle for charging.



Drive Motor Battery

Only an adult who has read and understands the safety warnings should handle, charge or recharge the battery. Failure to comply with all safety warnings may result in serious injury or death.

Battery Fuse

The drive motor circuit features a thermal fuse that will automatically trip and cut all power to the vehicle if the motor, electric system or battery is overloaded. The fuse will reset and power will be restored after a short time. If the thermal fuse trips repeatedly during normal use, the vehicle may need repair.

DO NOT BYPASS THE FUSE - RISK OF FIRE. This may overload and damage the electrical system.

Battery Re-charge Interval and Time

IMPORTANT!

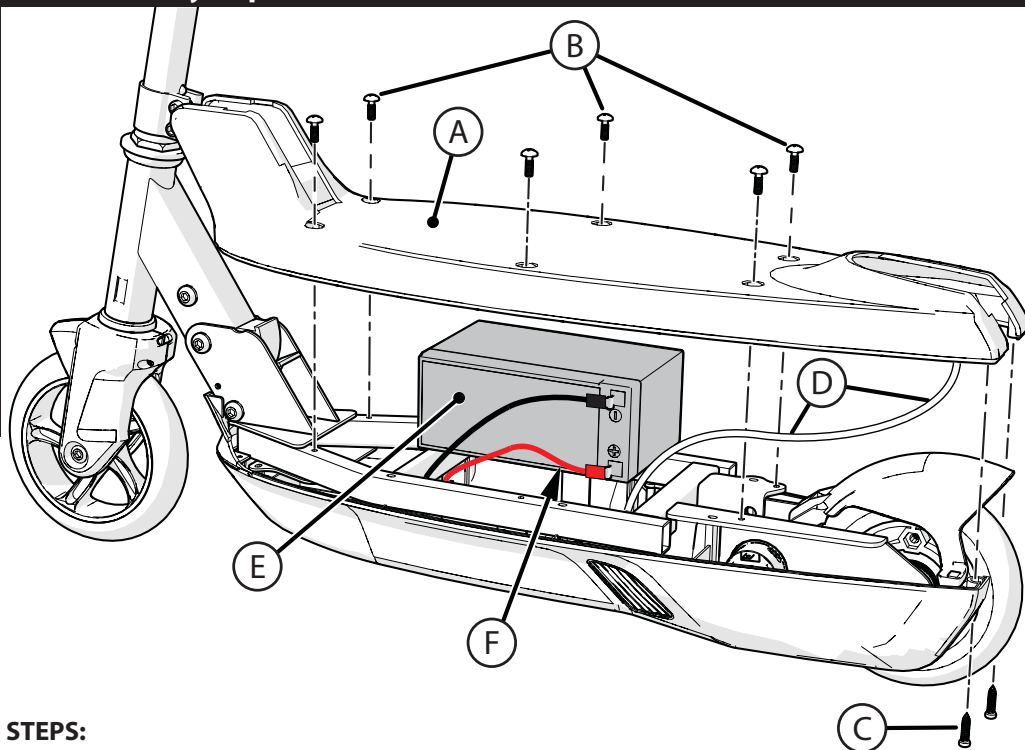
Check the drive battery and charger (supply cord, connector) for wear and damage before charging. Do not charge the battery if damage has occurred. Only replace with the same type and voltage rechargeable battery and charger supplied by the manufacturer.

- Only use the rechargeable battery (or equivalent replacement) and charger supplied with your vehicle.
- Before first use, charge battery **8 to 12 hours - never longer than 20 hours.**
- Once battery is depleted, recharge for **8 to 12 hours - never longer than 20 hours.**
- Do not short circuit the battery: Do NOT connect red and black wires together or connect positive and negative terminals on the battery together.
- When battery is fully charged, un-plug charger from the wall outlet and disconnect from charger port.

The drive battery should be charged when depleted, or if not used regularly, once a month. Failure to charge the battery as directed will cause permanent damage to the battery and will void the warranty.

⚠ WARNING: RISK OF FIRE. Do not bypass Fuse. Replace only with 30 Amp Fuse.

Drive Battery Replacement:



STEPS:

1. Remove Deck (A) by removing 6 Machine Screws (B) and 2 self-starting Screws (C).

CAUTION: Brake Switch Harness (D) will remain attached to Deck.

2. Carefully lift out Battery (E) straight up.
3. Disconnect Negative and Positive Connectors (F).
4. **See Maintenance sections for Disposal and Storage.**

To replace Battery - Always replace with same type and size as original:

CAUTION: Make sure Brake Switch Harness (D) does not get pinched or bound up when re-installing Deck (A).

1. Connect Negative and Positive Plugs (F).
2. Carefully insert Battery into lower body - being careful not to pinch any wires or plugs.
3. Re-install upper Deck (A) by installing 6 Machine Screws (B) and 2 self-starting Screws (C).

Parts List

#	Description
1	Steering Tube
2	Handlebar Cover (2 pieces)
3	Throttle Button
4	Grips (x2)
5	Snap-in Handlebar Grips and End Cap assembly (x2)
6	Steering Tube Clamp
7	Headset Bearings
8	Front Wheel
9	Axle - Shoulder Screw Set
10	Fork Assembly w/ Housing
11	Top Deck
12	Machine Screws (x6)
13	Self-Starting Screws (x2)
14	Brake/Fender w/ Spring
15	Brake Switch w/ Cable
16	Battery

Introduction to Assembly

This Owner's Manual may be made for several different style products.

- Some illustrations may vary slightly from the actual product.
- Follow instructions completely.
- If the product has any parts that are not described in this manual, look for separate "Special Instructions" that are supplied with the unit.
- All features, components and accessories are not included on all models.
- Use the Index page to locate specific sections of this manual.
- Please read through this entire manual before beginning assembly or maintenance.
- If you are not confident with assembling this unit, contact customer service.

NOTE: All of the directions (right, left, front, rear, etc.) in this manual are as seen by the rider while seated.

Do not dispose of the carton and packaging until you complete the assembly of the product. This can prevent accidentally discarding parts of the unit.

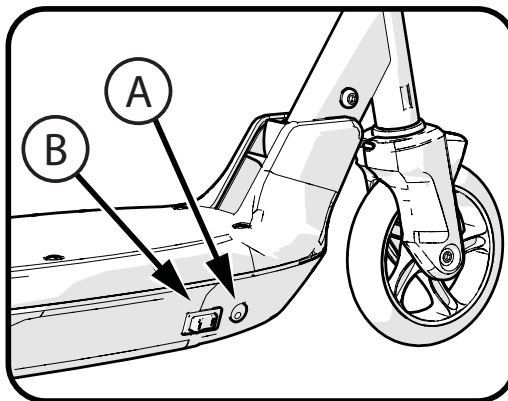
Tools Needed



Allen Wrenches (supplied)

CHARGING PORT LOCATION:

NOTE: Charging Port (A) is located on the front RIGHT side of the deck, next to the Power ON/OFF switch (B).



Maintenance Repair and Service

General:

- **The Vehicle:** Frame, Fork and Handlebars should be checked for cracks, damage, missing or badly worn parts before each use. If any part of the product does not operate properly – discontinue use.
- **Tires/Wheels:** Periodically check tires and wheels for excess wear or damage. If equipped with pneumatic tires, regularly check tire pressure and adjust as needed. Tire pressure is listed on side of tires.
- Check the tightness of the wheels: **Note:** If the drive wheel is not tight, it will not engage the gears and the vehicle will not run.
- **Brakes:** Check brakes for proper function. Check Fender/Foot Brake for function and condition. If model has hand brakes, check that brake lever provides proper braking when squeezed and that brakes do not rub.
- **Fasteners:** Check the tightness of the fasteners before each use. Replace any fasteners that are damaged. Make sure all fasteners are correctly tightened as written in this manual and any "Special Instructions". Parts that are not tight enough can be lost or operate poorly. Over tightened parts can be damaged. Make sure any replacement fasteners are the correct size and type.
- **Inspect the product frequently:** Failure to inspect the product and to make repairs or adjustments, as necessary, can result in injury to the rider or to others. Make sure all parts are correctly assembled and adjusted as written in this manual and any "Special Instructions".
- Immediately replace any damaged, missing, or badly worn parts with original equipment.
- Ensure battery is secured and the battery bracket is securely in place before use.
- Store the vehicle indoors. Keep it away from sources of heat, such as stoves and heaters.
- Keep the product clean and free of dirt, dust and water. This will prolong the useful life of the product.
- Clean the vehicle with a soft, dry cloth. To restore shine to plastic parts, use a non-wax furniture polish. Do not use automotive wax, abrasive cleaners or wash the vehicle with soap and water.

! WARNING: Water will damage the motor, electrical system and battery.

NOTE: If the instructions in this manual or any "Special Instructions" are not sufficient for you, please contact customer service.

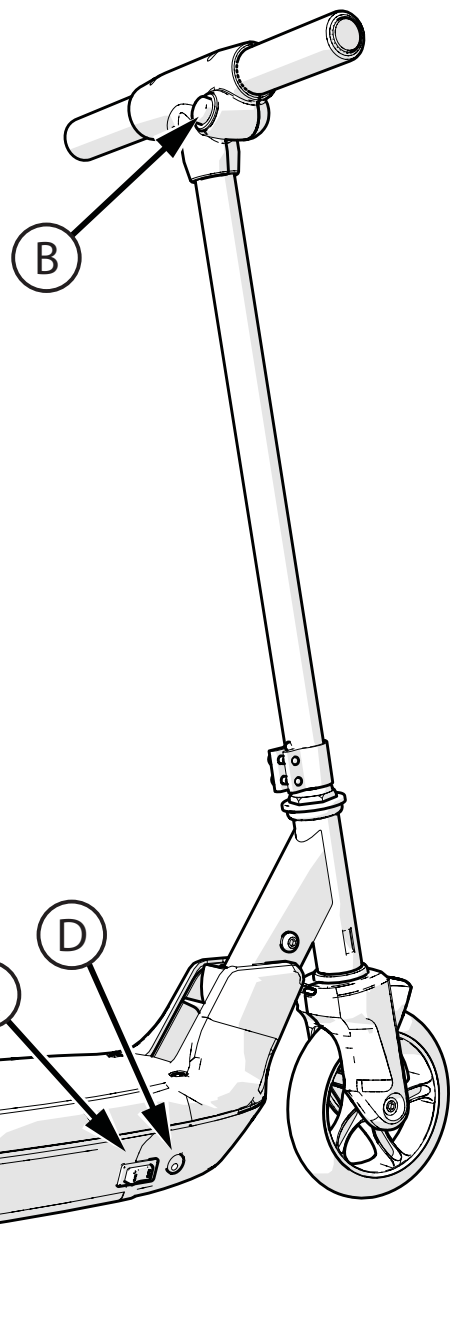
Operation:

USAGE:

- Turn ON power by switching on the Power Switch (A).
- Engage Drive Motor by pushing Throttle Button (B).
- Release Throttle Button (B) to turn off Drive Motor.
- Apply foot to rear Fender/Brake (C) to stop.

⚠ WARNING: Fender/Brake (C) can become HOT with use. Do not touch with hands.

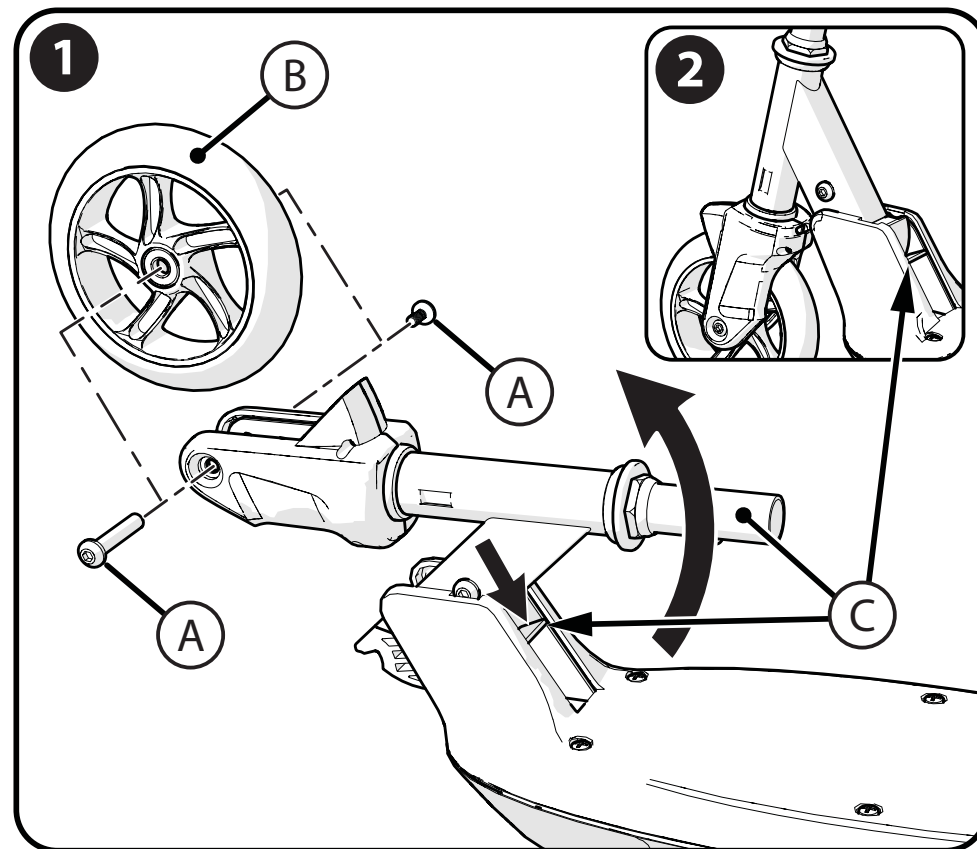
NOTE: Charging Port (D). See charging instructions.



⚠ WARNING: Both hands must firmly grip the handlebar before pushing Power Button (B). Failure to follow this rule can result in personal injury or damage to the product.

Installing Front Wheel:

NOTE: Front Wheel may already be assembled by factory



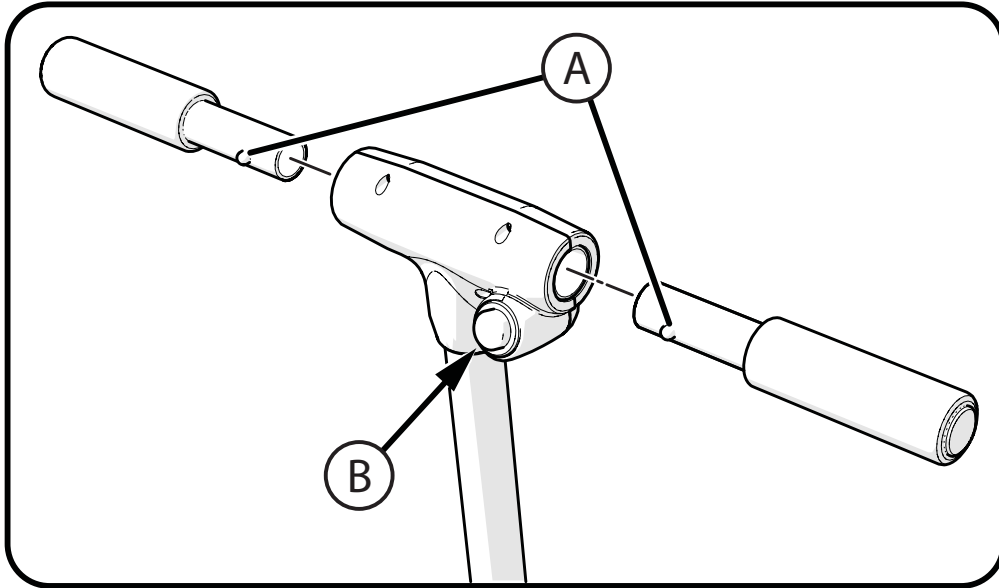
STEP 1:

1. Remove Shoulder Screws (A) if pre-installed.
2. Place Front Wheel (B) into Fork so that axle holes line up.
3. Install Shoulder Screws (A) fully and securely.

STEP 2:

4. Unfold Fork assembly by releasing Lock (C) and tilting Fork assembly forward until it SNAPS into the upright LOCKED position.

Installing Hand Grips:

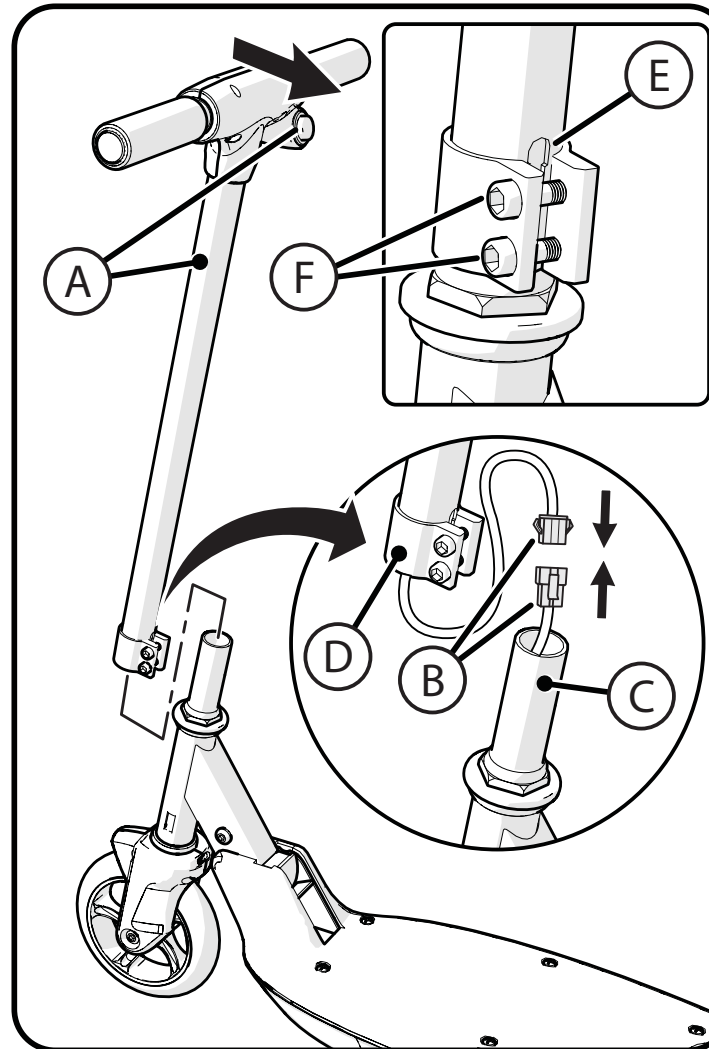


STEPS:

1. Insert each Hand Grip with Lock Ball **(A)** facing BACK (same side as Power Button **(B)**).
2. Insert while twisting slightly until Lock Balls SNAP into LOCKED position.

NOTE: Test Grips by trying to pull them out. They should remain locked into position.

Install Handlebar and Power Connector:



STEPS:

1. Ensure Handlebar Assembly **(A)** is facing toward the BACK.
2. Connect Power Plugs **(B)** firmly and completely.
3. Put excess wire inside steering tube.
4. Slide Handlebar Assembly over Fork Tube **(C)** fully - Ensure Slot **(E)** is facing BACK.
5. With Clamp **(D)** facing BACK, tighten Clamp Screws **(F)** evenly and securely.

! WARNING: Make sure Handlebar and Fork turn easily and completely from left to right without binding Wiring Harness.