

# OWNER'S MANUAL

READ AND UNDERSTAND THIS ENTIRE MANUAL BEFORE USING!

**HUN0681/HUN0682-XX612**



## **WARNING**

Must be assembled by an adult.

- Suitable for 18m+
- Maximum user weight: 20 kg

**Read and understand this entire manual before using!**

Please keep this manual for future reference as it contains important information.  
Before first time use, charge the battery for at least 8 hours.

FOR ANY PRODUCT ENQUIRIES OR ISSUES PLEASE CONTACT HUNTER PRODUCTS  
AT [WWW.ELECTRICRIDEON.COM.AU](http://WWW.ELECTRICRIDEON.COM.AU) OR TOLL FREE HELP LINE 1800 224 094.

# A

## About Your New Vehicle

On the purchase of your new Ride-On.

This ride-on car will provide your child with many miles of riding of enjoyment. To help assure you and your rider a safe ride we ask you to please read this manual carefully, and keep it for future reference.

Follow the recommendations in this manual, they are designed to improve the safety and operation of your ride-on car and its rider.

### Specification

External dimensions	72*40*45cm	Power Mode	Rechargeable
Age Grade	18m +	Charging Spec	DC8V 500MA
Loading limitation	20 KG	Charging Time	8-12 hours
Input	100-240VAC 50/60HZ	Power life	280 times charging
Battery Spec	6V, 4.5AH	Fuse Spec	Self-resetting fuse



## **WARNING:**

**ADULT ASSEMBLY REQUIRED.**

Read all instructions carefully before assembling this product.



## **WARNING: ASSEMBLY**

- Keep these instructions for future reference.
- Prior to assembly, this package contains small parts: hardware which is a choking hazard and may contain sharp edges and sharp points. Keep product away from children until assembled.
- Ensure working area is free of danger, always dispose packaging material in such a way that it may not cause any harm. Plastic bags can be dangerous. To avoid suffocation, Please keep plastic bags away from babies and children.
- To prevent serious injury, children must not use the equipment until completely assembled.
- Changing of spare parts should only be done by an adult. The battery is very heavy and the internal contents has acidic electrolytes. If battery leaking occurs, avoid contact with eyes. If there is accidental direct contact with battery leakage, it is imperative that the skin area is rinsed under cold water for at least 15 minutes. Please seek immediate medical attention.

## **IMPORTANT - MUST READ CAREFULLY**



## **WARNING: USE**

**TO AVOID SERIOUS INJURY:** Continuous adult supervision is required while this vehicle is in operation.

- To reduce the risk of injury, adult supervision is required. **DO NOT** leave the child play vehicle alone to avoid accidents.
- **NEVER** use in or near roadways, near motor vehicles, on or near steep inclines or steps, swimming pools or other bodies of water and dangerous place, always wear shoes, and **NEVER** allow more than 1 rider.
- **NEVER** allow children to ride at night.
- Instruct children on proper use of this product and to sit properly when driving. **DO NOT RIDE VEHICLE STANDING UP.**
- It is recommended that the rider always wears safety equipment such as fitted helmet when riding the vehicle.
- Ride-on toys should be used with caution since skill is required to avoid falls or collisions which may cause injury to the user.
- The vehicle is intended for use on flat, level surfaces.
- **DO NOT** ride the vehicle indoors. It is intended for outside use **ONLY**. Interior floors can be damaged by riding the vehicle indoors.
- **DO NOT** tow objects behind the vehicle or overload the vehicle as doing so will cause damage.
- This toy contains batteries that are non-replaceable.
- **WARNING:** Not to be used in traffic, it has potential hazards of using the ride-on electric toy in areas other than private grounds.

**FOR ANY PRODUCT ENQUIRIES OR ISSUES PLEASE CONTACT HUNTER PRODUCTS AT [WWW.ELECTRICRIDEON.COM.AU](http://WWW.ELECTRICRIDEON.COM.AU) OR TOLL FREE HELP LINE 1800 224 094.**

**C****Parts List**

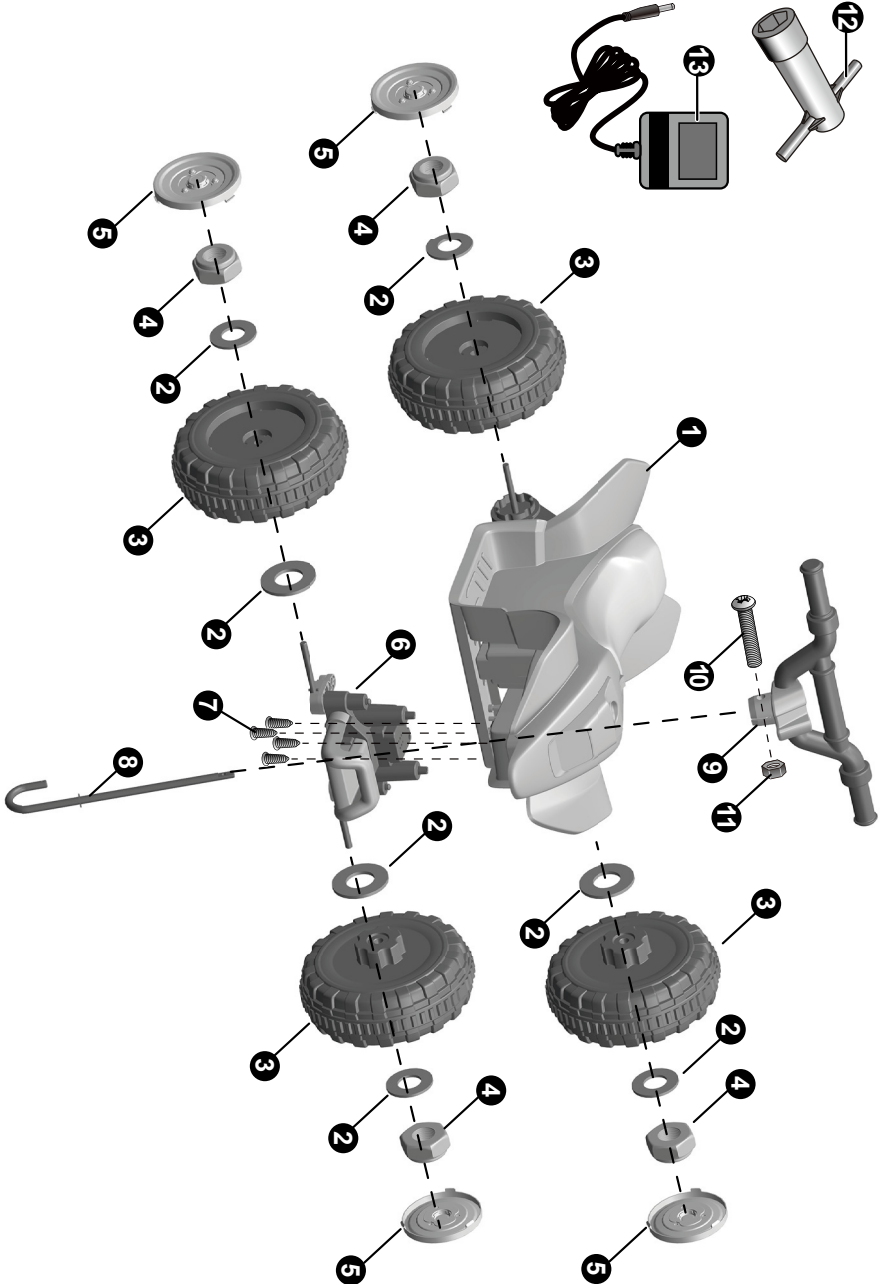
NO.	PART NAME	Q'TY (PCS)	REMARK
1	Vehicle body	1	
2	Ø10 washer	7	
3	Wheel	4	
4	Lock nut	4	
5	Hubcap	4	
6	Front axle lingage	1	
7	Ø4x16 screw	4	
8	Steering column	1	
9	Handle bar	1	
10	M5x30 machine screw	1	
11	Ø5 nut	1	
12	Spanner	2	
13	Charger	1	

FOR ANY PRODUCT ENQUIRIES OR ISSUES PLEASE CONTACT HUNTER PRODUCTS  
AT [WWW.ELECTRICRIDEON.COM.AU](http://WWW.ELECTRICRIDEON.COM.AU) OR TOLL FREE HELP LINE 1800 224 094.

# Parts Diagram

D

HINT: Some parts shown are assembled on both sides of vehicle



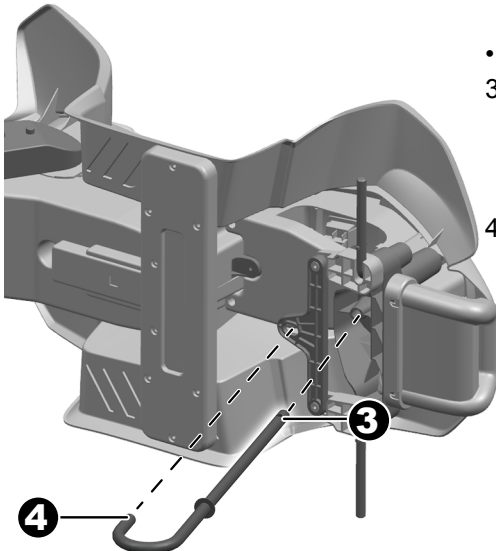
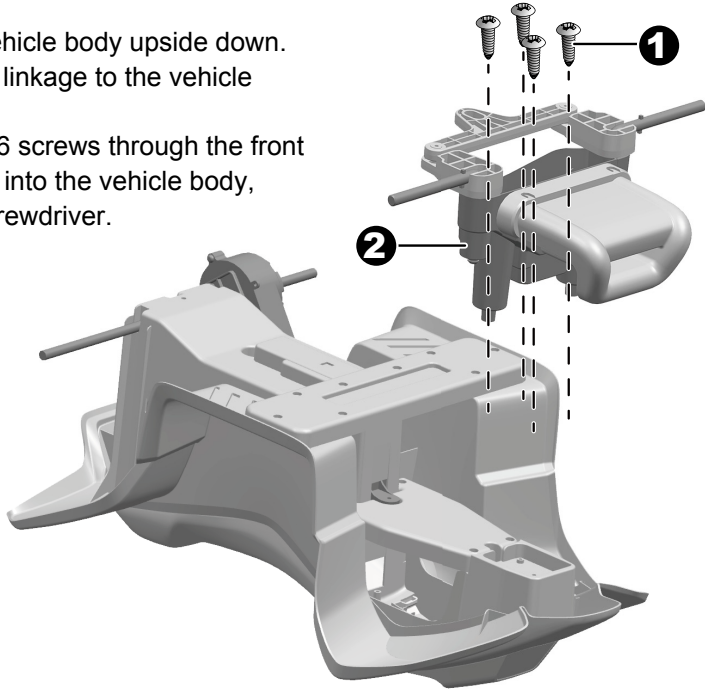
FOR ANY PRODUCT ENQUIRIES OR ISSUES PLEASE CONTACT HUNTER PRODUCTS AT [WWW.ELECTRICRIDEON.COM.AU](http://WWW.ELECTRICRIDEON.COM.AU) OR TOLL FREE HELP LINE 1800 224 094.

# E

## Fit the Front Axle Linkage

- Gently turn the vehicle body upside down.

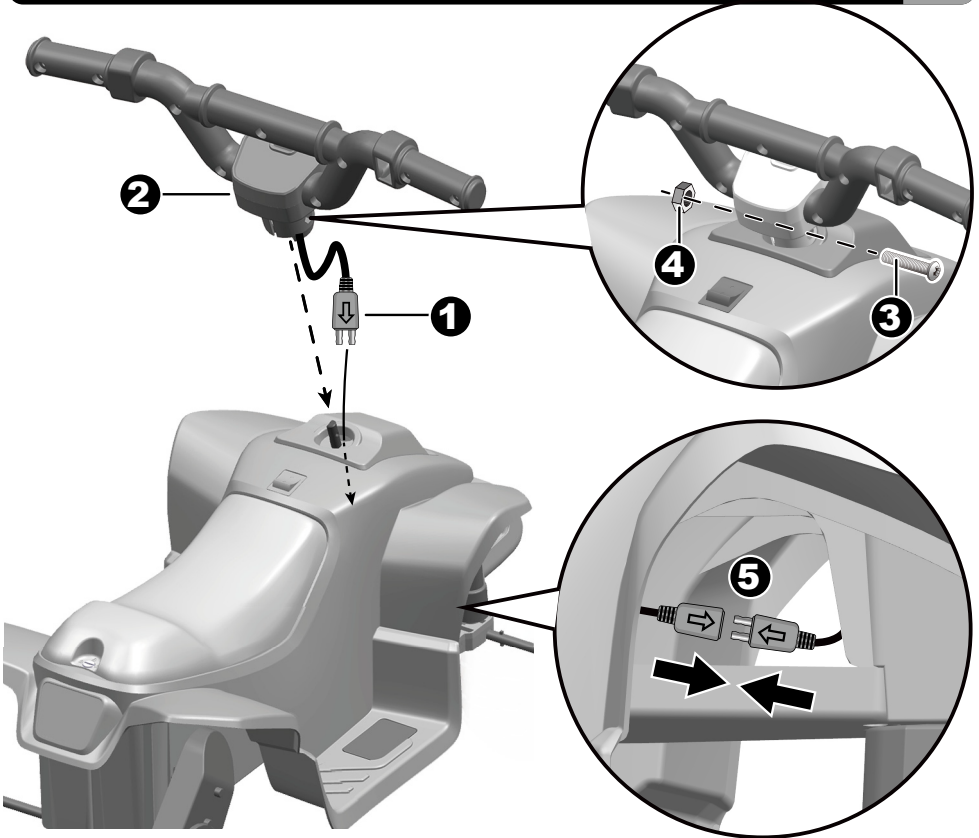
1. Fit the front axle linkage to the vehicle body.
2. Insert four Ø4x16 screws through the front axle linkage and into the vehicle body, tighten with a screwdriver.



- Turn the vehicle body on its side.
3. Insert the straight end of the steering column into the hole on the vehicle body and out through the hole on the top of the vehicle body.
  4. Insert the bent end of the steering column into the hole on the front axle linkage.

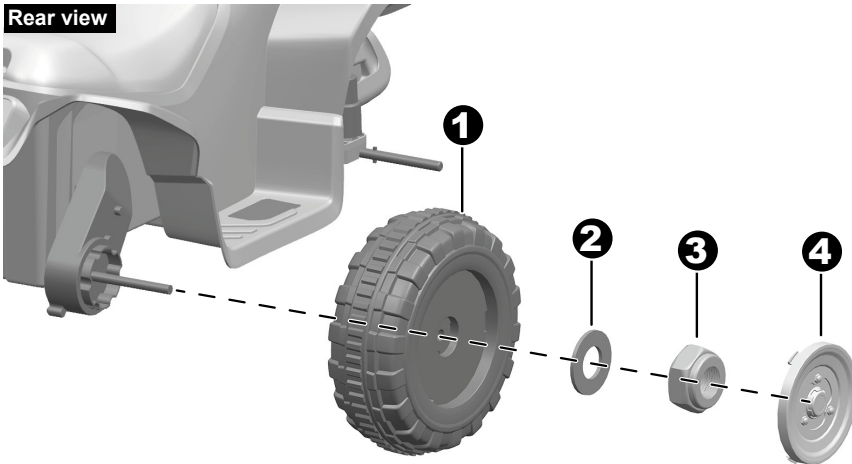
## Attach the Handle Bar

E

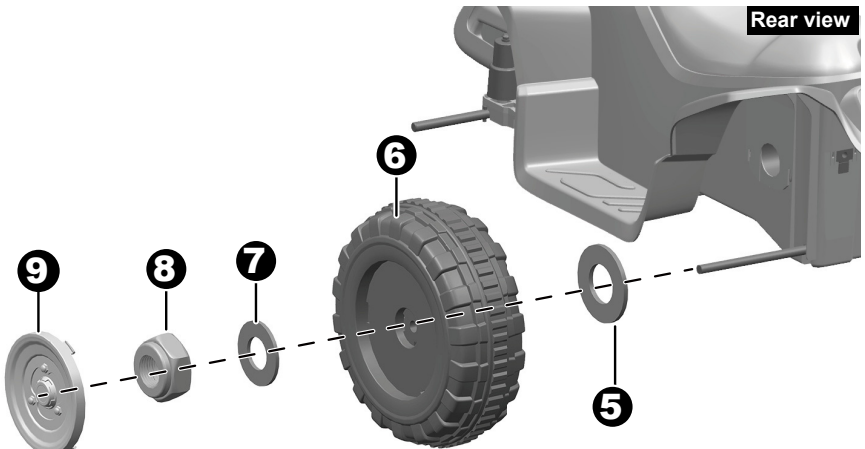


- Turn the vehicle body over.
1. Insert the power unit connector into the hole the vehicle body.
  2. Fit the handle bar onto the end of the steering column.
  - 3&4. Line up the holes on the steering wheel with the holes on the steering column, insert the M5x30 machine screw. Fasten a nut on the opposite end of the screw. Using a long nose pliers to hold the nut while tightening the screw on the other side with a screwdriver.
  5. Plug the power unit connector into the connector on the vehicle body.

FOR ANY PRODUCT ENQUIRIES OR ISSUES PLEASE CONTACT HUNTER PRODUCTS AT [WWW.ELECTRICRIDEON.COM.AU](http://WWW.ELECTRICRIDEON.COM.AU) OR TOLL FREE HELP LINE 1800 224 094.

**E****Attach the Rear Wheels****Rear view**

1. Slide a wheel onto the rear axle from the right side. Ensure the wheel match up with the gear box.
2. Slide a  $\Phi 10$  washer onto the rear axle.
3. Tighten a lock nut to the end of the rear axle with a spanner.
4. Insert the tabs on the hubcap into the grooves on the wheel.
5. Slide a  $\Phi 10$  washer onto the rear axle from the left side.
6. Slide a wheel onto the rear axle.
7. Slide a  $\Phi 10$  washer onto the rear axle.
8. Tighten a lock nut to the end of the rear axle with a spanner.
9. Insert the tabs on the hubcap into the grooves on the wheel.

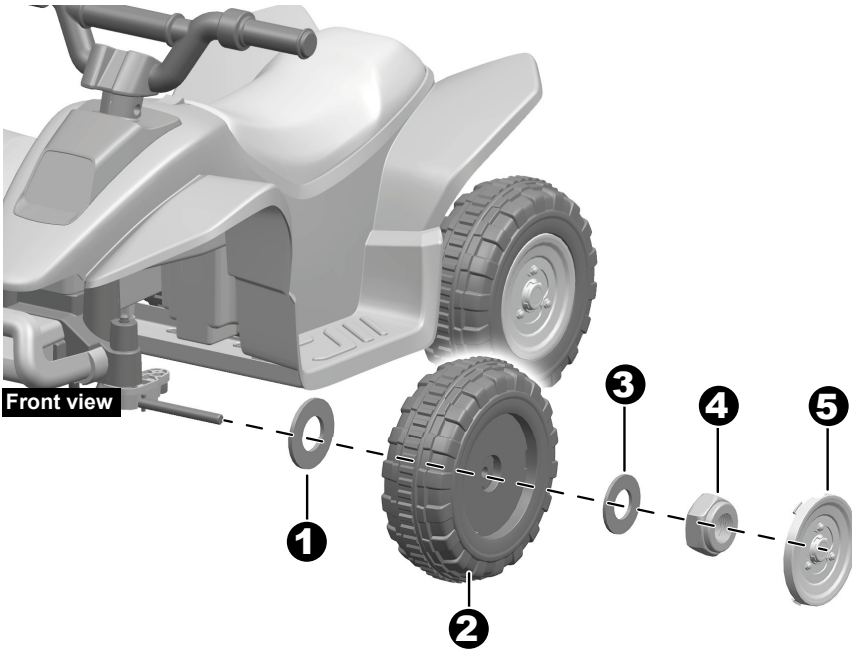
**Rear view**

**FOR ANY PRODUCT ENQUIRIES OR ISSUES PLEASE CONTACT HUNTER PRODUCTS AT [WWW.ELECTRICRIDEON.COM.AU](http://WWW.ELECTRICRIDEON.COM.AU) OR TOLL FREE HELP LINE 1800 224 094.**

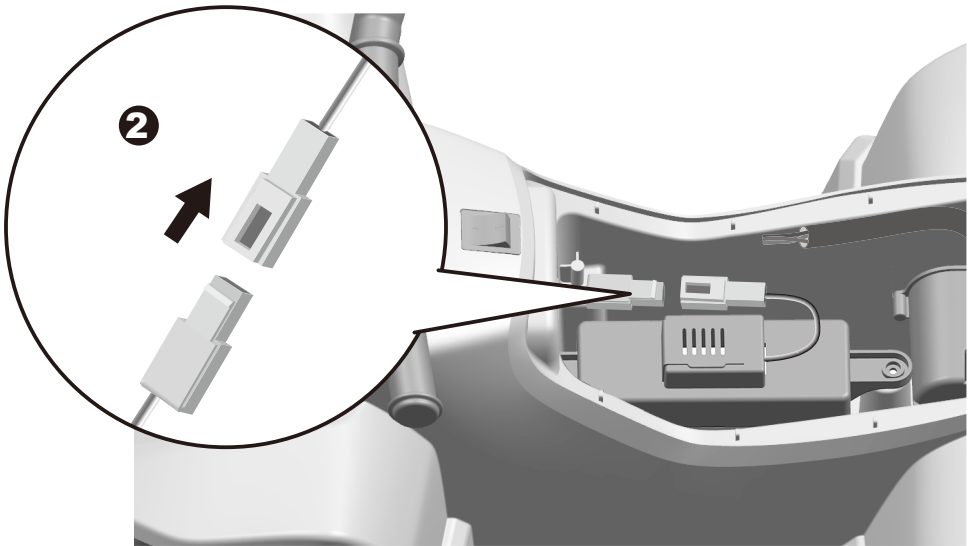
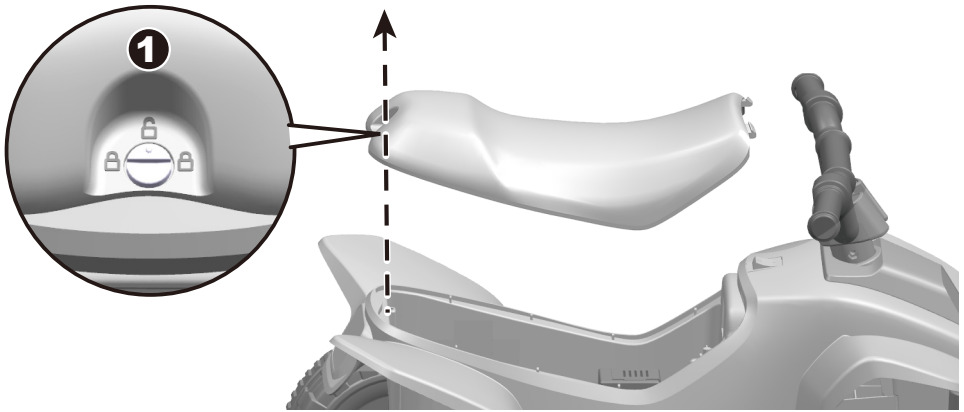


## Attach the Front Wheels

E



1. Slide a  $\Phi 10$  washer onto the front axle from the left side.
2. Slide a wheel onto the front axle.
3. Slide a  $\Phi 10$  washer onto the front axle.
4. Tighten a lock nut to the end of the front axle with a spanner.
5. Insert the tabs on the hubcap into the grooves on the wheel.

**E****Connect the Power Supply**

1. Using a slotted screwdriver(not included) or coin to turn the seat lock, and remove the seat.
2. Plug the vehicle connector into the connector from the battery.
3. Replace the seat.

**FOR ANY PRODUCT ENQUIRIES OR ISSUES PLEASE CONTACT HUNTER PRODUCTS AT [WWW.ELECTRICRIDEON.COM.AU](http://WWW.ELECTRICRIDEON.COM.AU) OR TOLL FREE HELP LINE 1800 224 094.**



### IMPORTANT!

Always stop vehicle when changing direction to avoid damage the gears and motor.

#### 1. Power button:

- To move the product, press the button.
- To stop, release the button.

#### 2. Forward/reverse switch:

Changes the direction that the product moves from forward to reverse.

- To move the product forward, press the switch to top position.
- To move the vehicle reverse, press the switch to down position

**WARNING!**

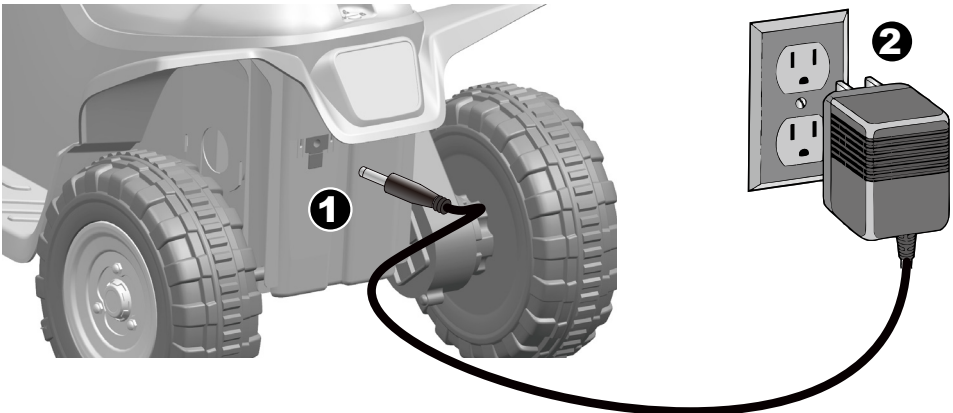
**ONLY AN ADULT CAN CHARGE AND RECHARGE THE BATTERY!**

**WARNING!**

This product with **Charging Protection**: when charging, all functions will be cut off! Only an adult can charge and recharge the battery!

- When the vehicle begins to run slowly, recharge the battery.
- Before the first use, you should charge the battery for 8 hours. Do not recharge the battery for more than 20 hours to avoid overheating the charger.
- After each use or once a month minimum recharge time as 8 to 12 hours, less than 20 hours at most.
- Use the only rechargeable battery and charger supplied with your vehicle. NEVER substitute the battery or the charger with another brand. Using another battery or charger may cause a fire or explosion.
- Do not use the battery or charger for any other product.

### 1. External charging type



1. Plug the charger port into the input socket. (the socket in on the back of the vehicle body)
2. Plug the charger plug into a wall outlet. The battery will begin charging.

**FOR ANY PRODUCT ENQUIRIES OR ISSUES PLEASE CONTACT HUNTER PRODUCTS AT [WWW.ELECTRICRIDEON.COM.AU](http://WWW.ELECTRICRIDEON.COM.AU) OR TOLL FREE HELP LINE 1800 224 094.**

# Troubleshooting Guide



Problem	Possible Cause	Solution
Vehicle does not run	Battery low on power	Recharge battery.
	Thermal fuse has tripped	Reset fuse, see <Fuse>
	Battery connector or wires are loose	Check that the battery connectors are firmly plugged into each other. If wires are loose around the motor <i>from your distributor please to Hunter Products - enquiries@hunterproducts.com.au</i>
	Battery is dead	Replace battery, <i>from your distributor please to Hunter Products - enquiries@hunterproducts.com.au</i>
	Electrical system is damaged	<i>From your distributor please to Hunter Products - enquiries@hunterproducts.com.au</i>
	Motor is damaged	<i>From your distributor please to Hunter Products - enquiries@hunterproducts.com.au</i>
Vehicle does not run very long	Battery is under charged	Check that the battery connectors are firmly plugged into each other when recharging
	Battery is old	Replace battery, <i>from your distributor please to Hunter Products - enquiries@hunterproducts.com.au</i>
Vehicle runs sluggishly	Battery low on power	Recharge battery, <i>from your distributor please to Hunter Products - enquiries@hunterproducts.com.au</i>
	Battery is old	Replace battery, <i>from your distributor please to Hunter Products - enquiries@hunterproducts.com.au</i>
	Vehicle is overload	Reduce weight on vehicle. Maximum user weight is 30kg.
	Vehicle is being used in harsh conditions	Avoid using vehicle in harsh conditions, see <Safety>.
Vehicle needs a push to go forward	Poor contact of wires or connectors	Check that the battery connectors are firmly plugged into each other. If wires are loose around the motor, <i>from your distributor please to Hunter Products - enquiries@hunterproducts.com.au</i>
	"Dead Spot" on motor	A dead spot means the electric power is not being delivered to the terminal connection and the vehicle needs repair. <i>From your distributor please to Hunter Products - enquiries@hunterproducts.com.au</i>
Difficult shifting from forward to reverse or vice-versa	Attempting to shift while the vehicle is motion	Completely stop the vehicle and shift, see <Use Your Ride-On>
Loud grinding or clicking noises coming from motor or gear box	Motor or gears are damaged	<i>From your distributor please to Hunter Products - enquiries@hunterproducts.com.au</i>
Battery will not recharge	Battery connector or adapter connector is loose	Check that the battery connectors are firmly plugged into each other.
	Charger not plugged in	Check that the battery charger is plugged into a working wall outlet.
	Charger is not working	<i>From your distributor please to Hunter Products - enquiries@hunterproducts.com.au</i>
Charger feels warm when recharging	This is normal and not a cause for concern	

Completely read through this manual and the troubleshooting guide table before calling. If you still need help resolving the problem **Contact your distributor please.**

**FOR ANY PRODUCT ENQUIRIES OR ISSUES PLEASE CONTACT HUNTER PRODUCTS AT WWW.ELECTRICRIDEON.COM.AU OR TOLL FREE HELP LINE 1800 224 094.**

- It is parents' responsibility to check main parts of the toy before using, must regularly examine for potential hazard, such as the battery, charge, cable or cord, plug, screws are fastening enclosure of other parts and that in the event of such damage, the toy must not be used until that damage had been properly removed.
- Make sure the plastic parts of the vehicle are not cracked or broken.
- Occasionally use a lightweight oil to lubricate moving parts such as wheels.
- Park the vehicle indoors or cover it with a tarp to protect it from wet weather.
- Keep the vehicle away from sources of heat, such as stoves and heaters. Plastic parts may melt.
- Recharge the battery after each use. Only an adult can handle the battery. Recharge the battery at least once a month when the vehicle Raider is not being used.
- Do not wash the vehicle with a hose. Do not wash the vehicle with soap and water. Do not drive the vehicle in rainy or snowy weather. Water will damage the motor, electric system and battery.
- Clean the vehicle with a soft, dry cloth. To restore shine to plastic parts, use a non-wax furniture polish. Do not use car wax. Do not use abrasive cleaners.
- Do not drive the vehicle in loose dirt, sand or fine gravel which could damage the moving parts, motors or the electric system.
- When not using, all the electrical source should be turn off. Turn off the power switch and disconnect the battery connection.

## Disposal Of Battery



- Your sealed lead-acid battery must be recycled or disposed of in an environmentally sound manner.
- Do not dispose of your lead-acid battery in a fire. The battery may explode or leak.
- Do not dispose of a lead-acid battery in your regular, household trash. The incineration, land filling or mixing of sealed lead-acid batteries with household trash is prohibited by law.

Our goods come with guarantees that cannot be excluded under the Australian Consumer Law. You are entitled to a replacement or refund for a major failure and for compensation for any other reasonably foreseeable loss or damage. You are also entitled to have the goods repaired or replaced if the goods fail to be of acceptable quality and the failure does not amount to a major failure.

For New Zealand customers, this warranty is in addition to statutory rights observed under New Zealand legislation.

Where a failure does not amount to a major failure, we are entitled to choose between providing you with a repair, replacement or refund. To obtain compensation, you would need to provide documentary evidence of the loss or damage suffered, and documentary evidence that such loss or damage was a reasonably foreseeable consequence of a failure by us to comply with a consumer guarantee under the Australian Consumer Law. Such evidence may include photographs, statutory declarations, receipts or reports (e.g. from your doctor), depending on the loss or damage.

In addition to all rights and remedies to which you may be entitled under the Competition and Consumer Act 2010 (Commonwealth) and any other relevant legislation, the manufacturer warrants this product to be free from defects in materials or workmanship for a period as stated on the packaging from the date of purchase.

In order to claim under this warranty, you will need to bring the product to the store of purchase, along with proof of purchase (typically this will be a receipt). Any cost incurred by you in bringing the product to the service desk will be borne by you. We will then, at our option, either repair or replace the product, or refund your money and take back the product.

Our liability under this manufacturer's warranty is subject to us being satisfied that a defect was caused by defective workmanship or materials, and was not caused by or substantially contributed to by other factors, or circumstances beyond our control, including (but not limited to) defective installation, maintenance or repair, alteration or modification of the product in any manner not recommended by the manufacturer or any neglect, misuse or excessive use.

The benefits conferred by this manufacturer's warranty are in addition to all rights and remedies conveyed by the Competition and Consumer Act 2010 (Commonwealth), and any other statutory rights to which you may already be entitled, and this warranty does not exclude, restrict or modify any such rights or remedies that are implied by law.

## HUNTER PRODUCTS

233 Bay Street, Brighton, Victoria 3186

Ph: 1800 224 094

Email: [enquiries@hunterproducts.com.au](mailto:enquiries@hunterproducts.com.au)

051421

**FOR ANY PRODUCT ENQUIRIES OR ISSUES PLEASE CONTACT HUNTER PRODUCTS  
AT [WWW.ELECTRICRIDEON.COM.AU](http://WWW.ELECTRICRIDEON.COM.AU) OR TOLL FREE HELP LINE 1800 224 094.**