

6V VW New Beetle Customer Service Guide



Customer Service Guide



Contents

I) Check Battery	3
II) Check Wiring Condition	6
III) Check Foot Pedal	10
IV) Gearbox Replacement	12
V) MP3 Circuit Board Replacement	17
VI) Schematic diagram	22
VII) Exploded View	23

CAUTION :

Disconnect the battery before proceed the checking and/or replacing processes

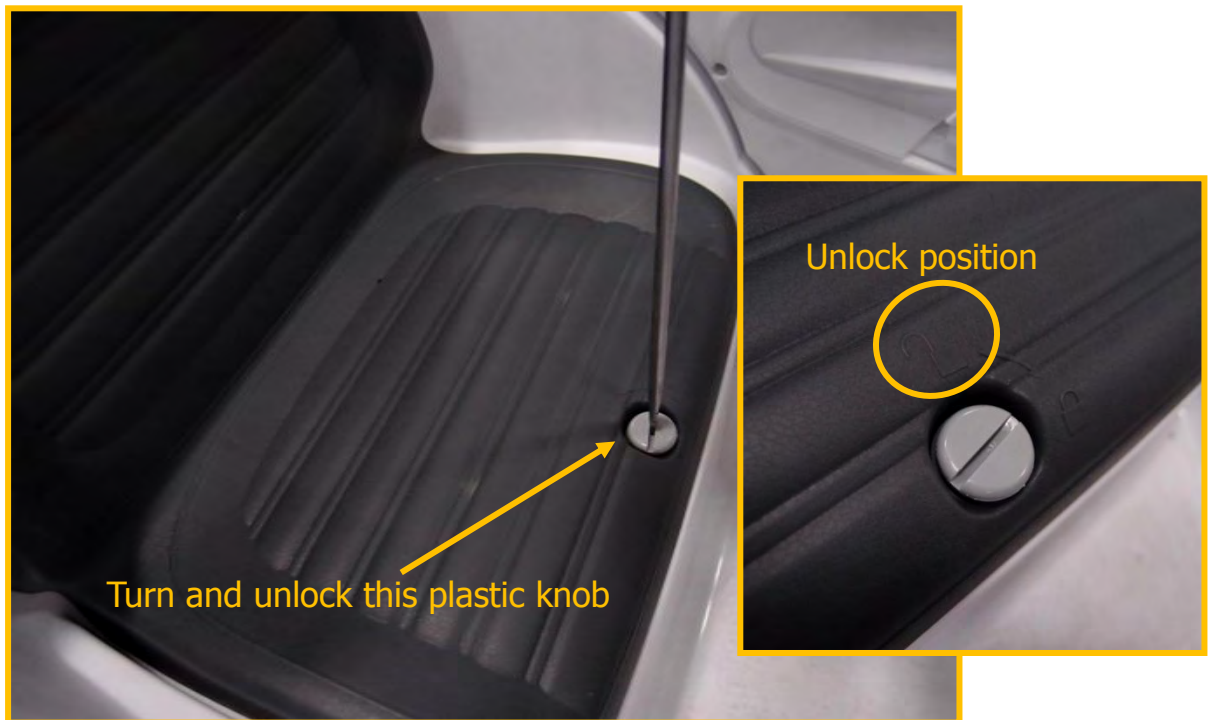
Customer Service Guide



I) Check Battery

Operation: Use a Flat head screwdriver, unlock and remove the seat. Locate the battery harness, unplug the connector then use a volt-meter to check battery condition at battery side.

Step (1)



Step (2)

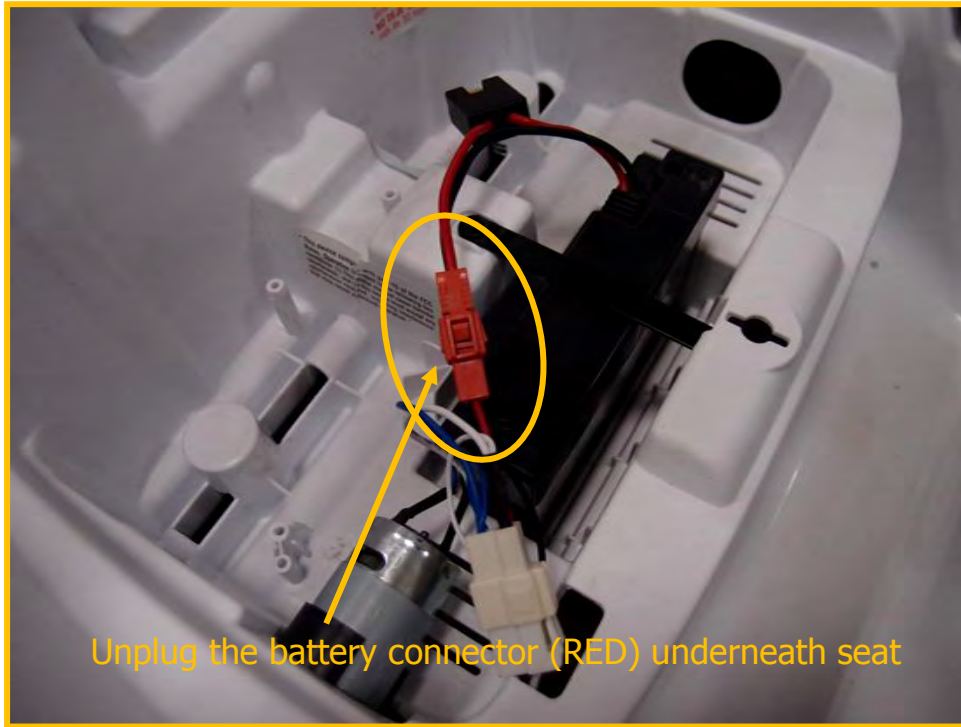


Customer Service Guide

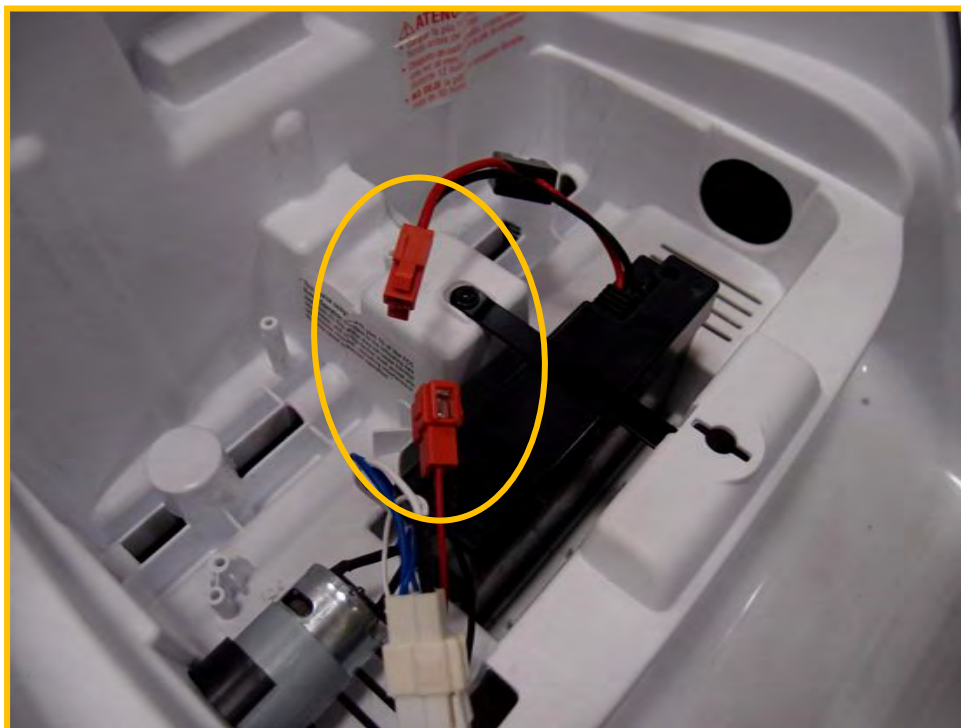


I) Check Battery

Step (3)



Step (4)

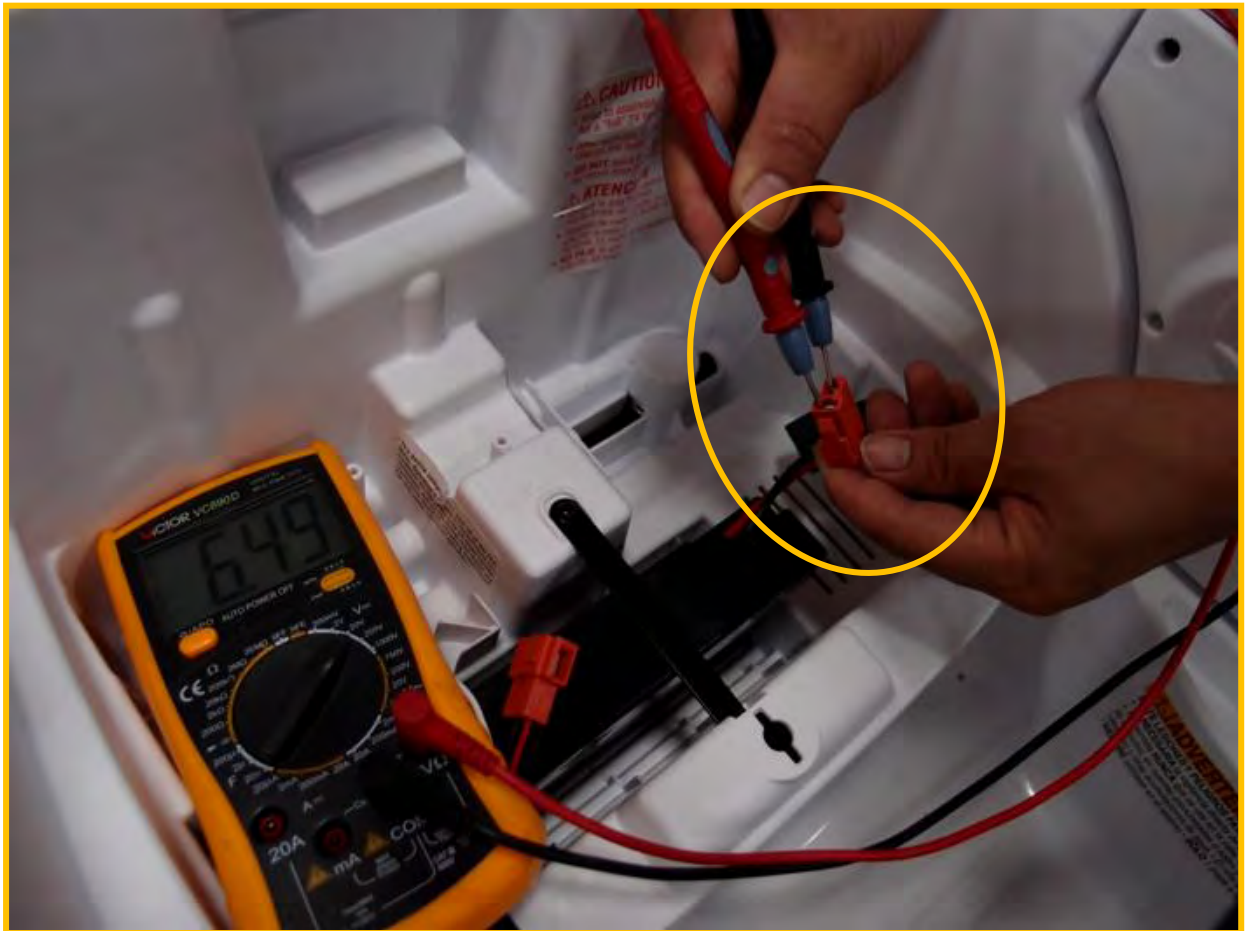


Customer Service Guide



I) Check Battery

Step
(5)



Reading Judgment: 6.0 V ~ 6.5 V – Good condition

5.6 V ~ 5.9 V – Proceed to Recharge

5.5 V – Battery to be recharged if after the stipulated recharging time, voltage has not increased, the Battery needs replacement

Below 5.5 V – Battery needs replacement

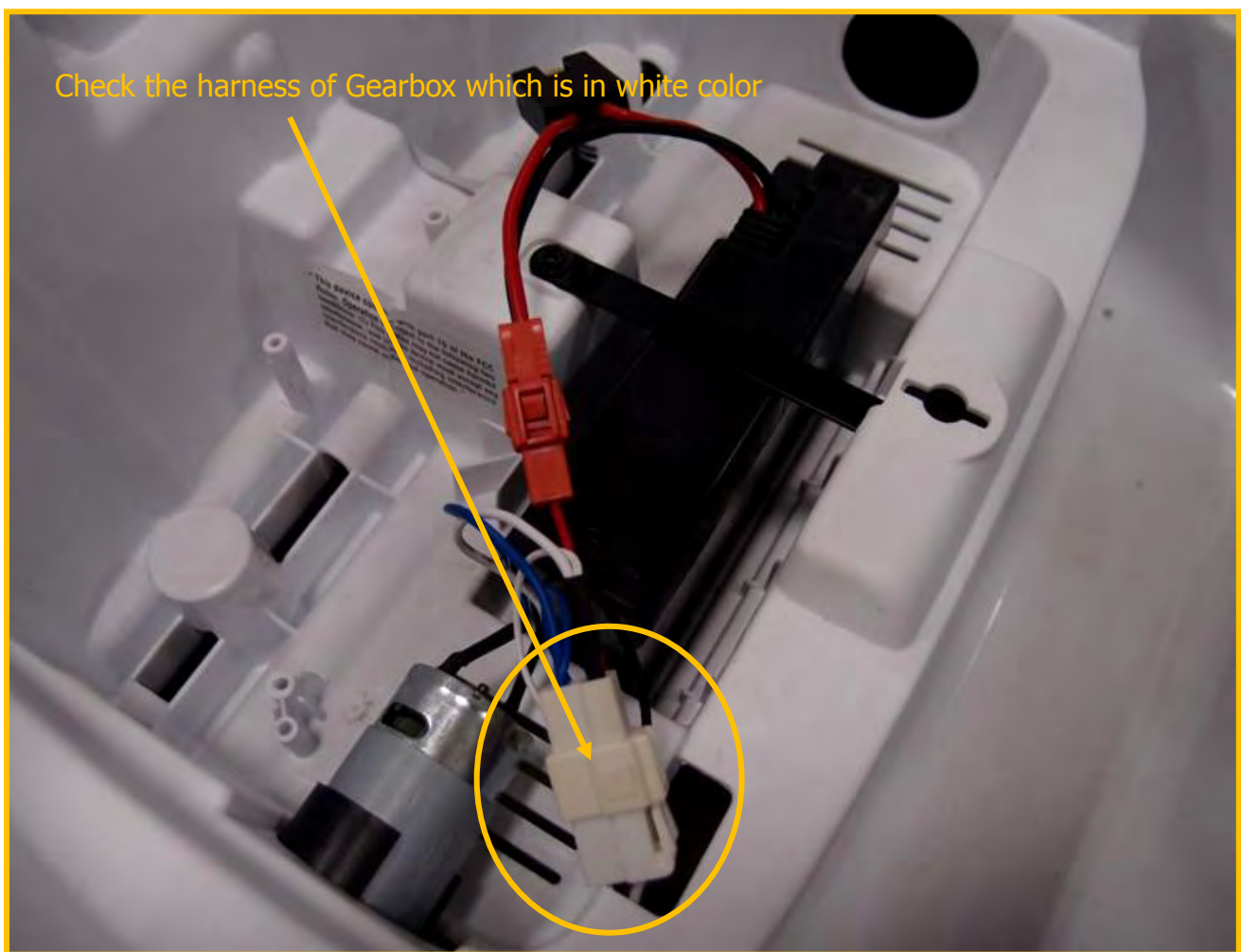
Customer Service Guide



II) Check Wiring Connection

Operation: There are totally two positions of connections should be checked.

- A. Motor/Gearbox : Follow above (Point I) to remove the seat, locate the Gearbox harness underneath.



Customer Service Guide



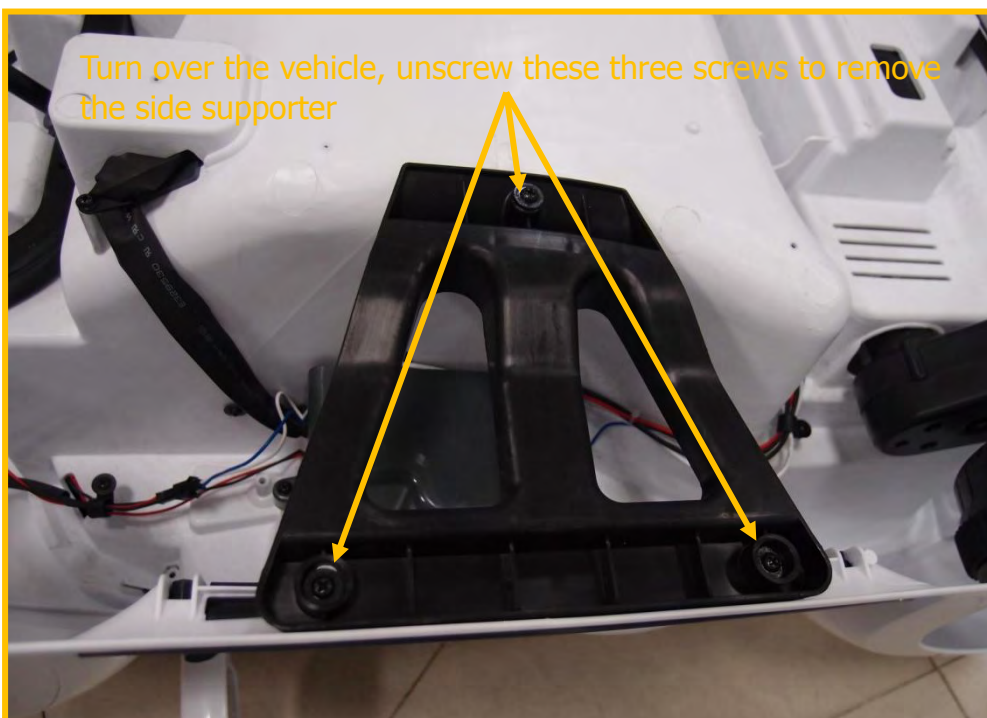
II) Check Wiring Connection

B. Functional Switches : Access all the functional switches which are located at the bottom side of Shifter per below procedures.

Step (1)



Step (2)

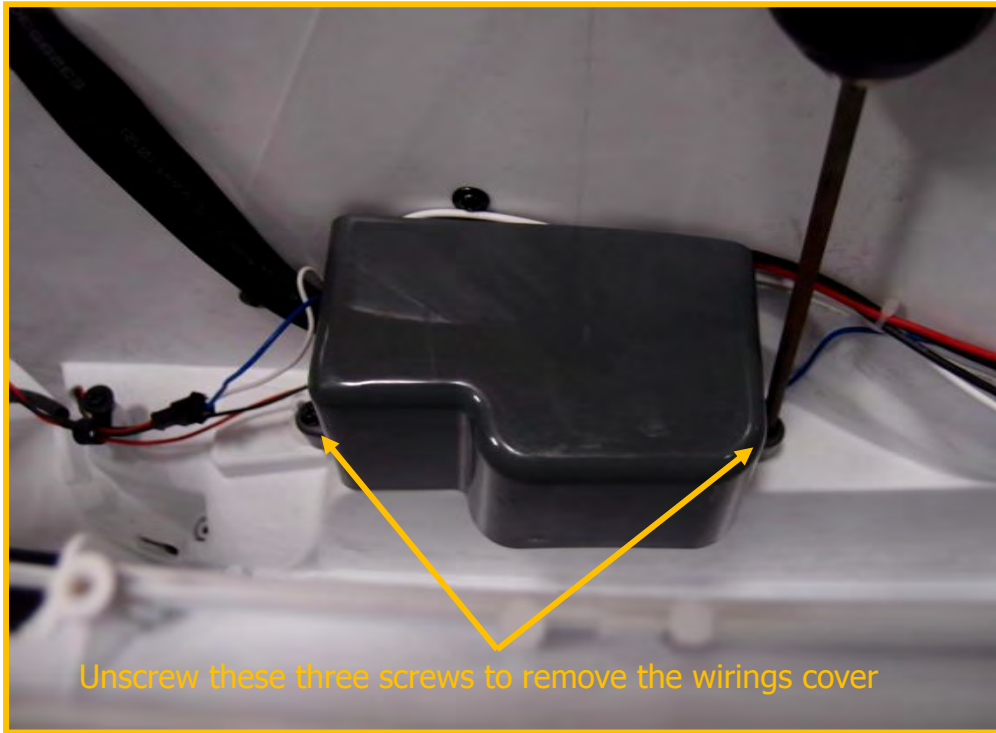


Customer Service Guide

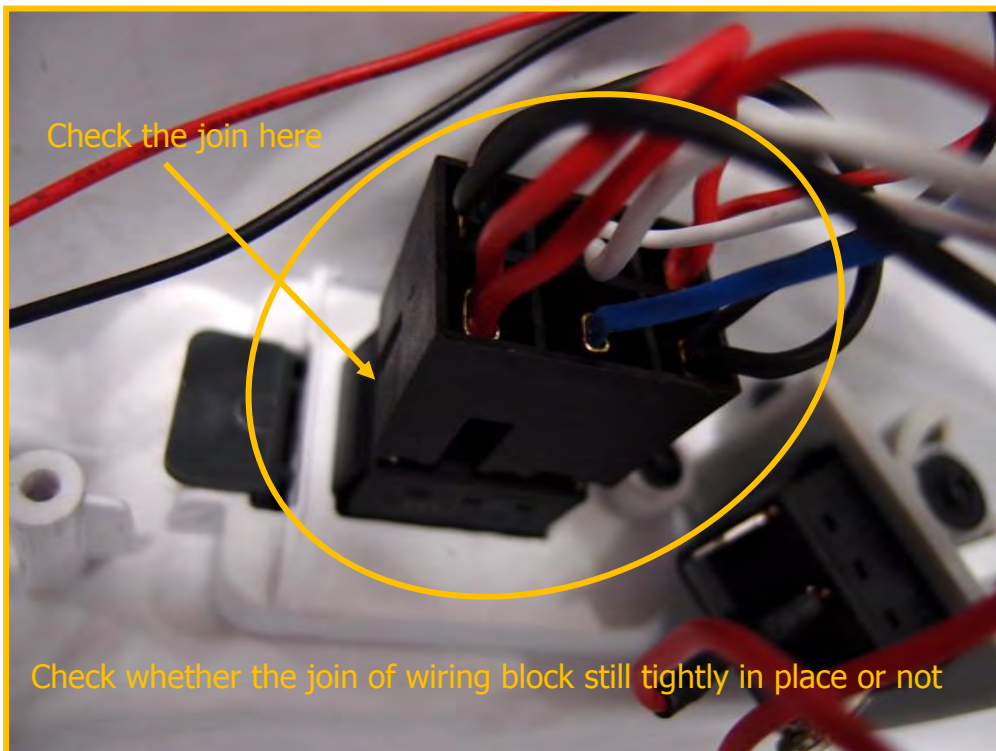


II) Check Wiring Connection

Step (3)



Step (4)

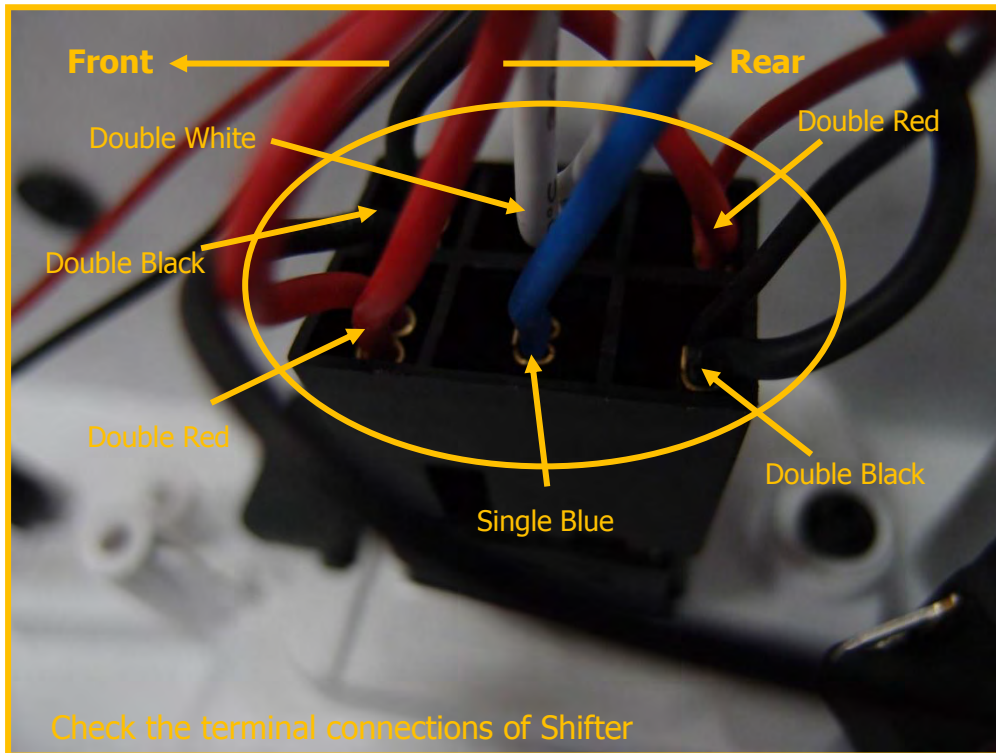


Customer Service Guide

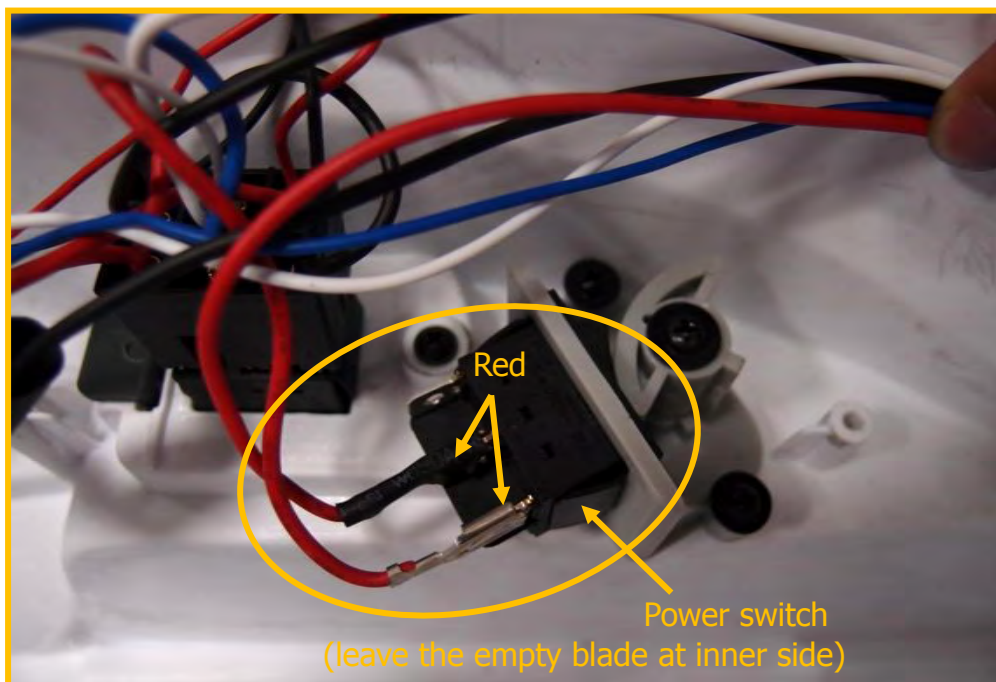


II) Check Wiring Connection

Step (5)



Step (6)



Reverse above procedures to re-assemble back the vehicle

Customer Service Guide



III) Check Foot Pedal

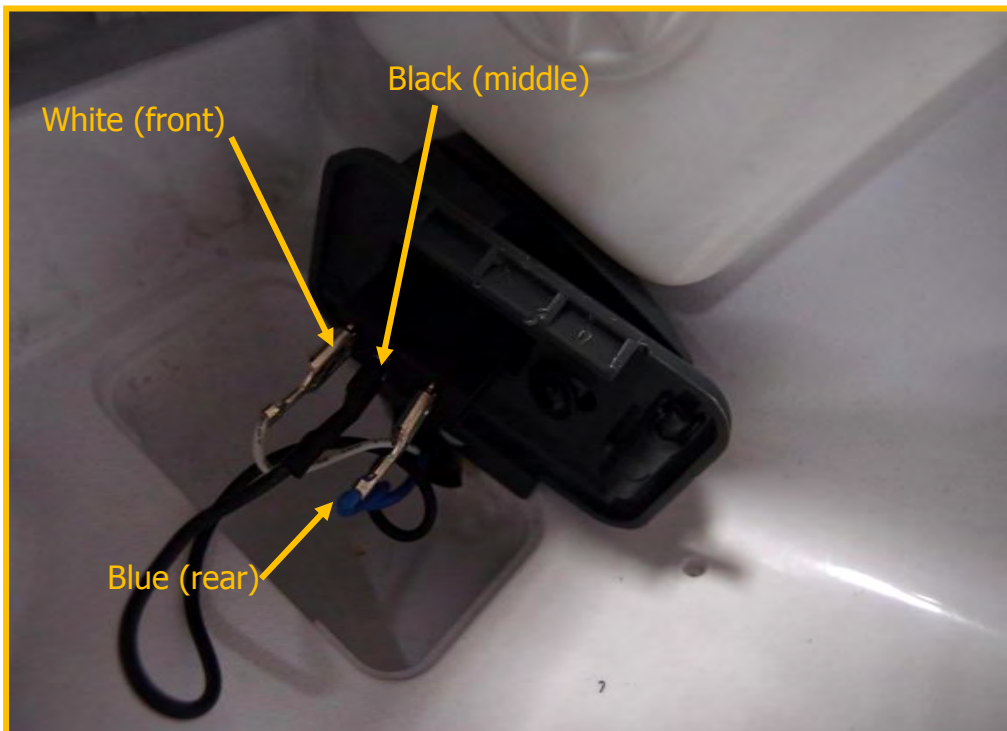
Operation: Follow below procedures to check the Foot Pedal connection.

Step (1)



Turn over the vehicle and pull out the Foot Pedal cover by screwdriver from right side

Step (2)



Customer Service Guide



III) Check Foot Pedal

Step
(3)



Customer Service Guide



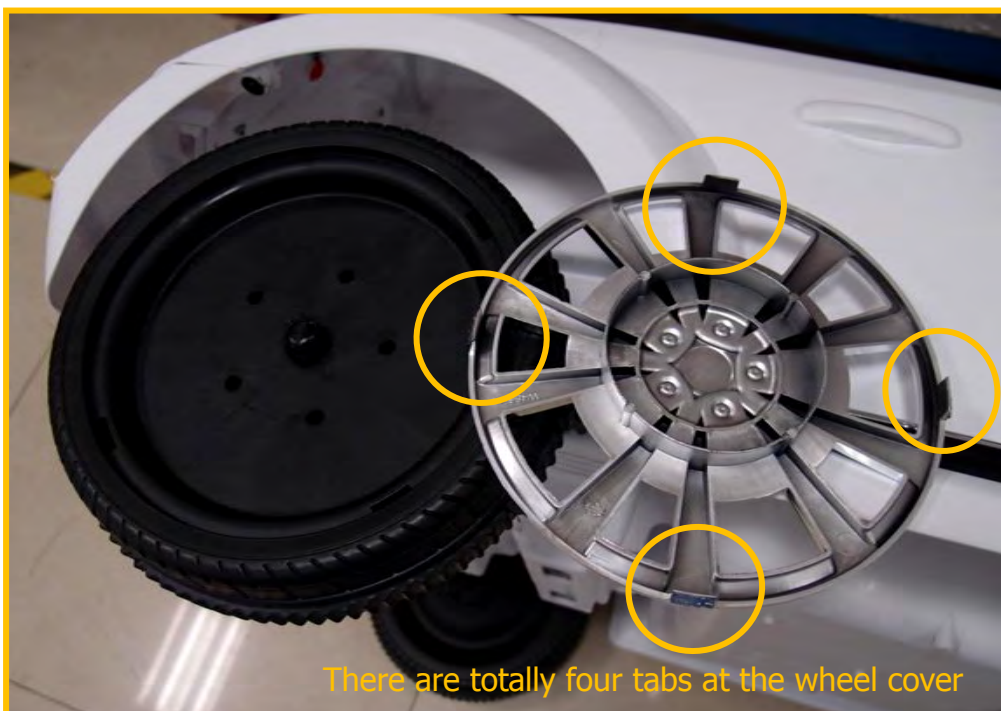
IV) Gearbox Replacement

Operation: Follow below steps to take apart the gearbox completely for replacing.

Step (1)



Step (2)



Customer Service Guide



IV) Gearbox Replacement

Step (3)



Step (4)



Customer Service Guide



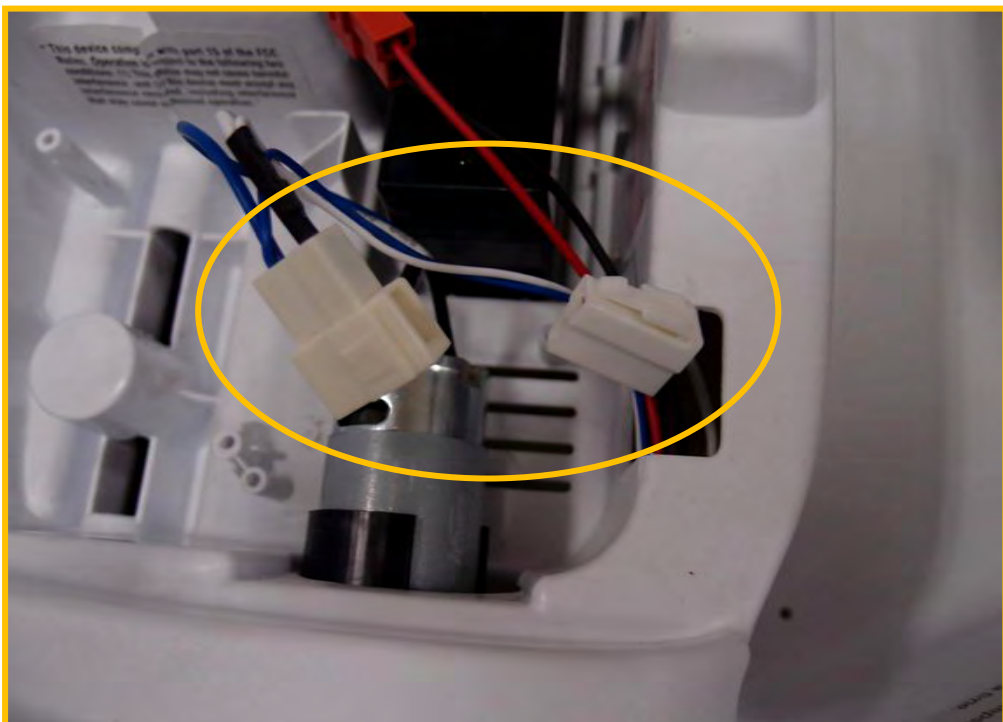
IV) Gearbox Replacement

Follow above (Point IIB) to access the Motor harness (white) underneath the seat, then unplug it before removing the gearbox

Step (5)



Step (6)

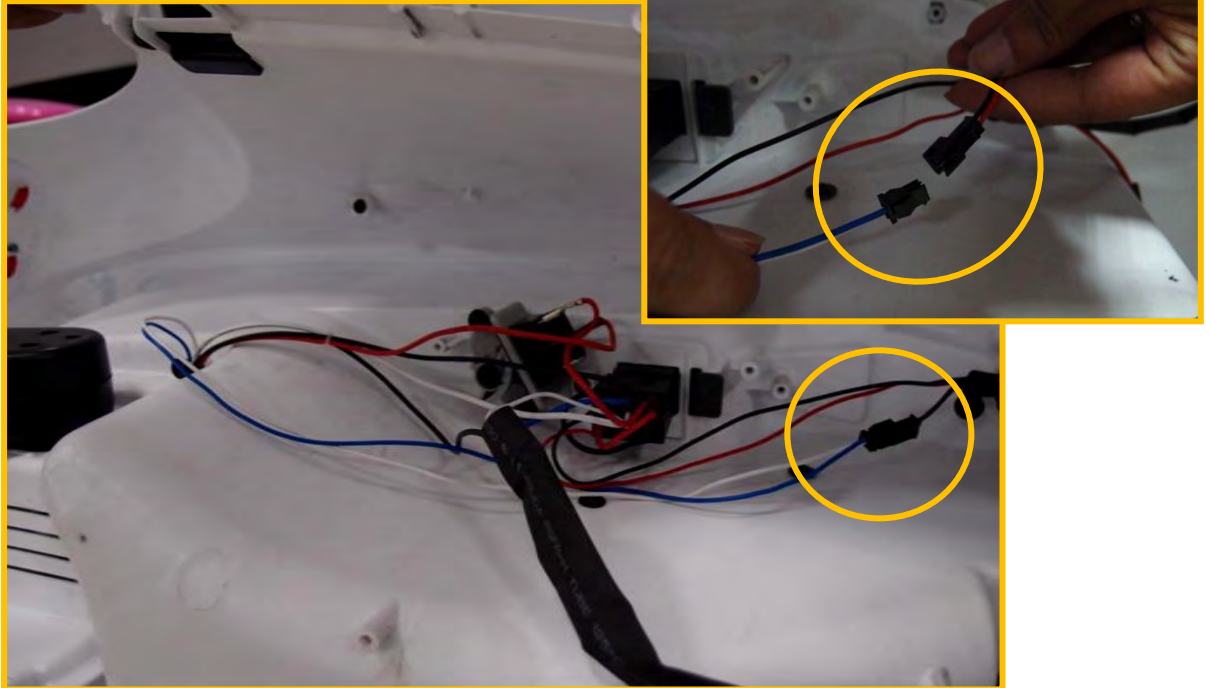


Customer Service Guide



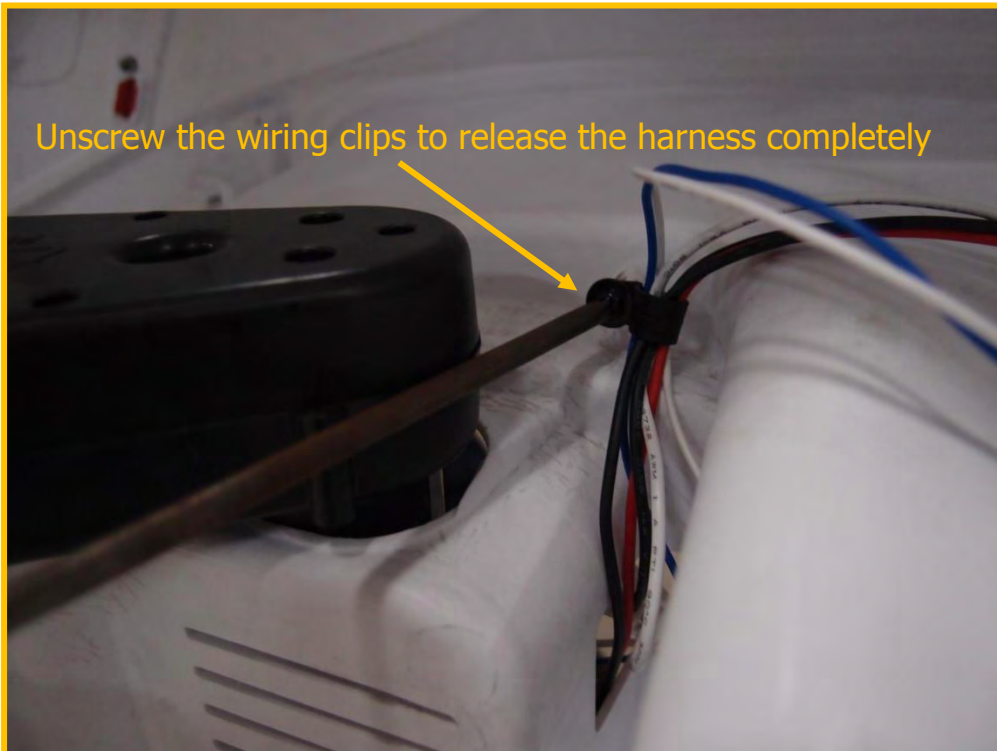
IV) Gearbox Replacement

Step (7)



Unplug the Headlights connector plugs located at middle of bottom side

Step (8)



Customer Service Guide



IV) Gearbox Replacement

Step (9)



Step (10)



Reverse above procedures to re-assemble back the vehicle

Customer Service Guide



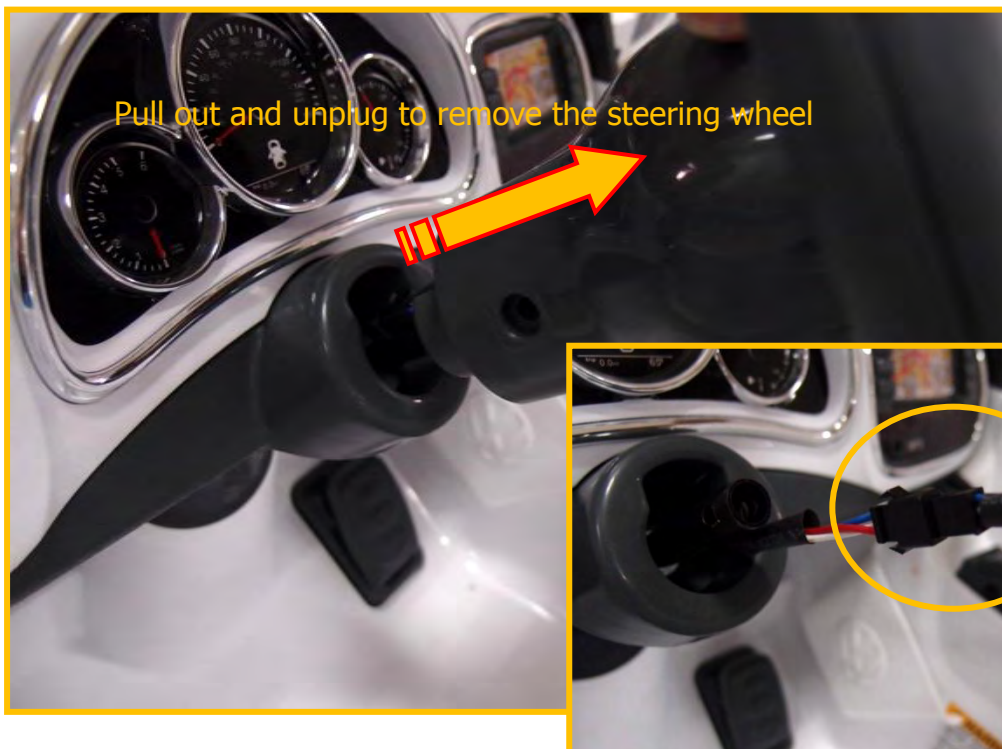
V) MP3 Circuit Board Replacement

Operation: Follow below procedures to remove and replace the Circuit Board.

Step (1)



Step (2)

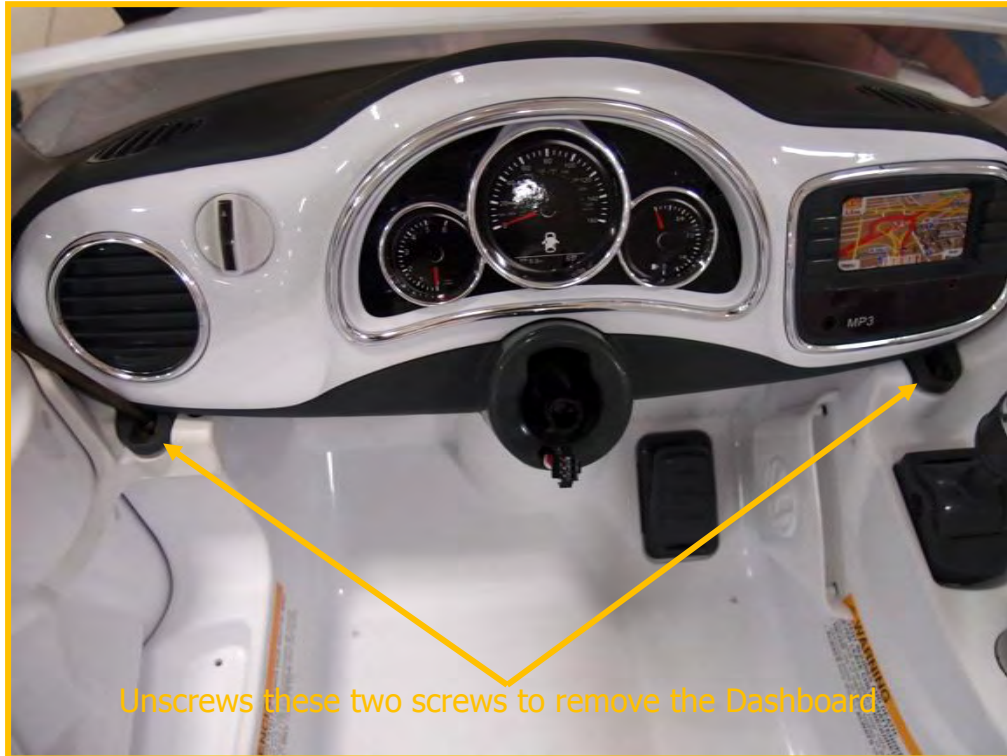


Customer Service Guide



V) MP3 Circuit Board Replacement

Step (3)



Unscrews these two screws to remove the Dashboard

Step (4)



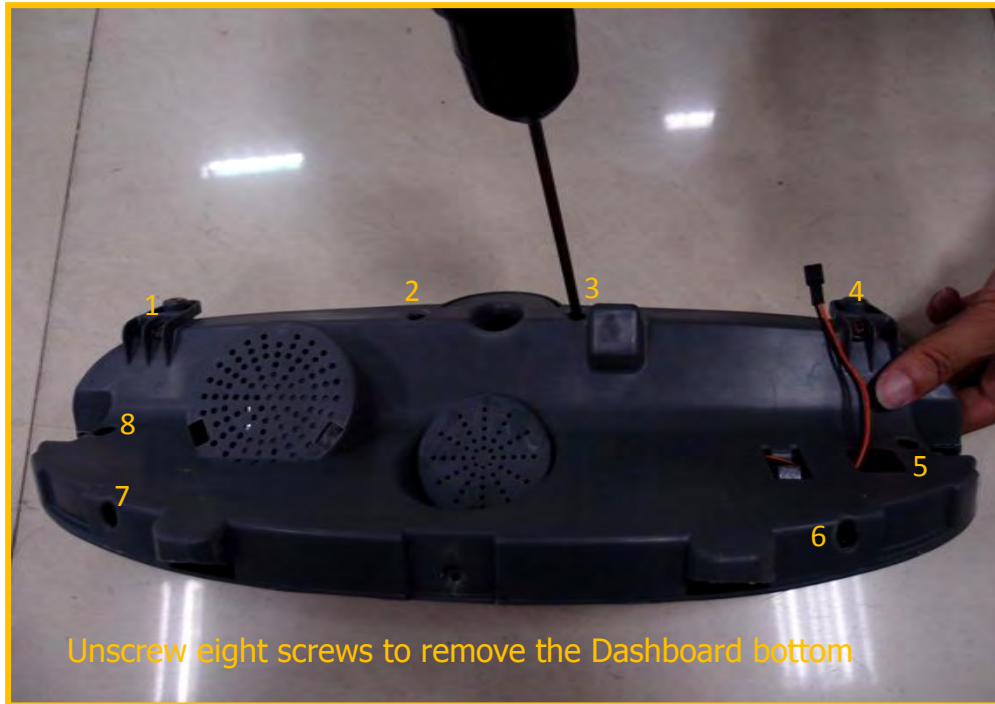
Detach the dashboard by pulling it out at the middle and unplug the connector

Customer Service Guide

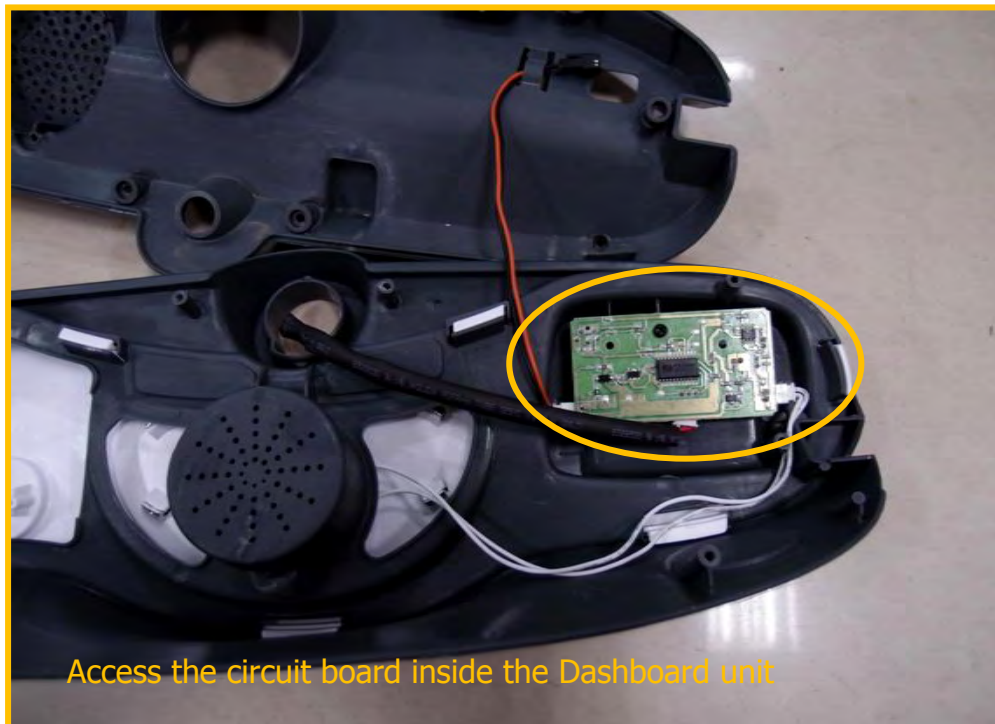


V) MP3 Circuit Board Replacement

Step (5)



Step (6)

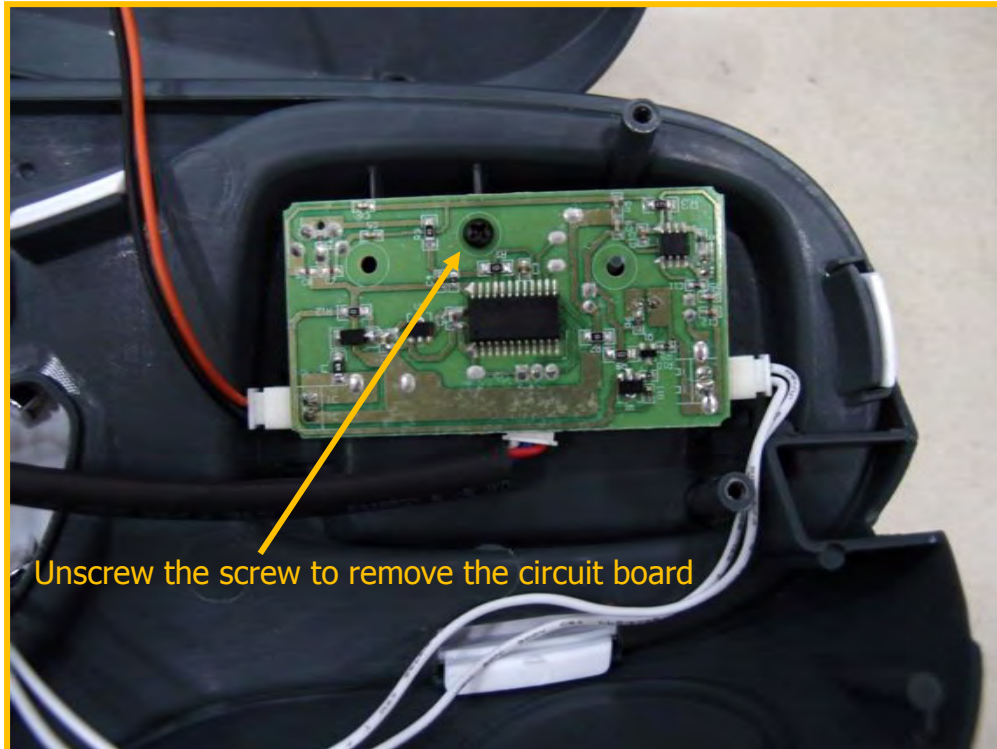


Customer Service Guide



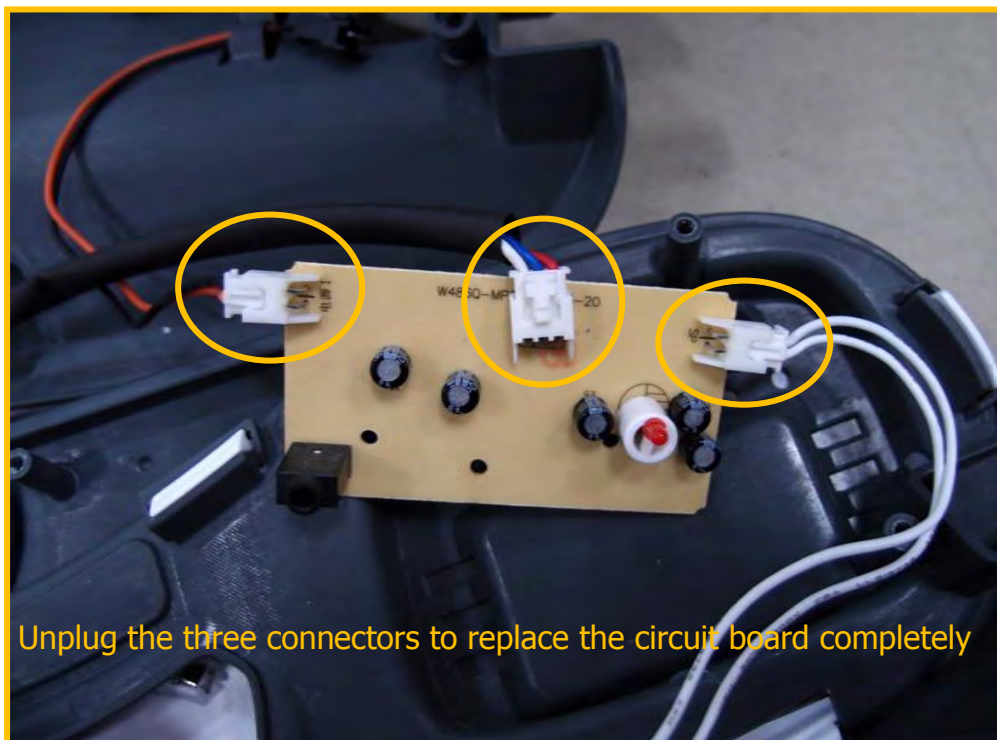
V) MP3 Circuit Board Replacement

Step (7)



Unscrew the screw to remove the circuit board

Step (8)



Unplug the three connectors to replace the circuit board completely

Customer Service Guide



V) MP3 Circuit Board Replacement

Step
(9)



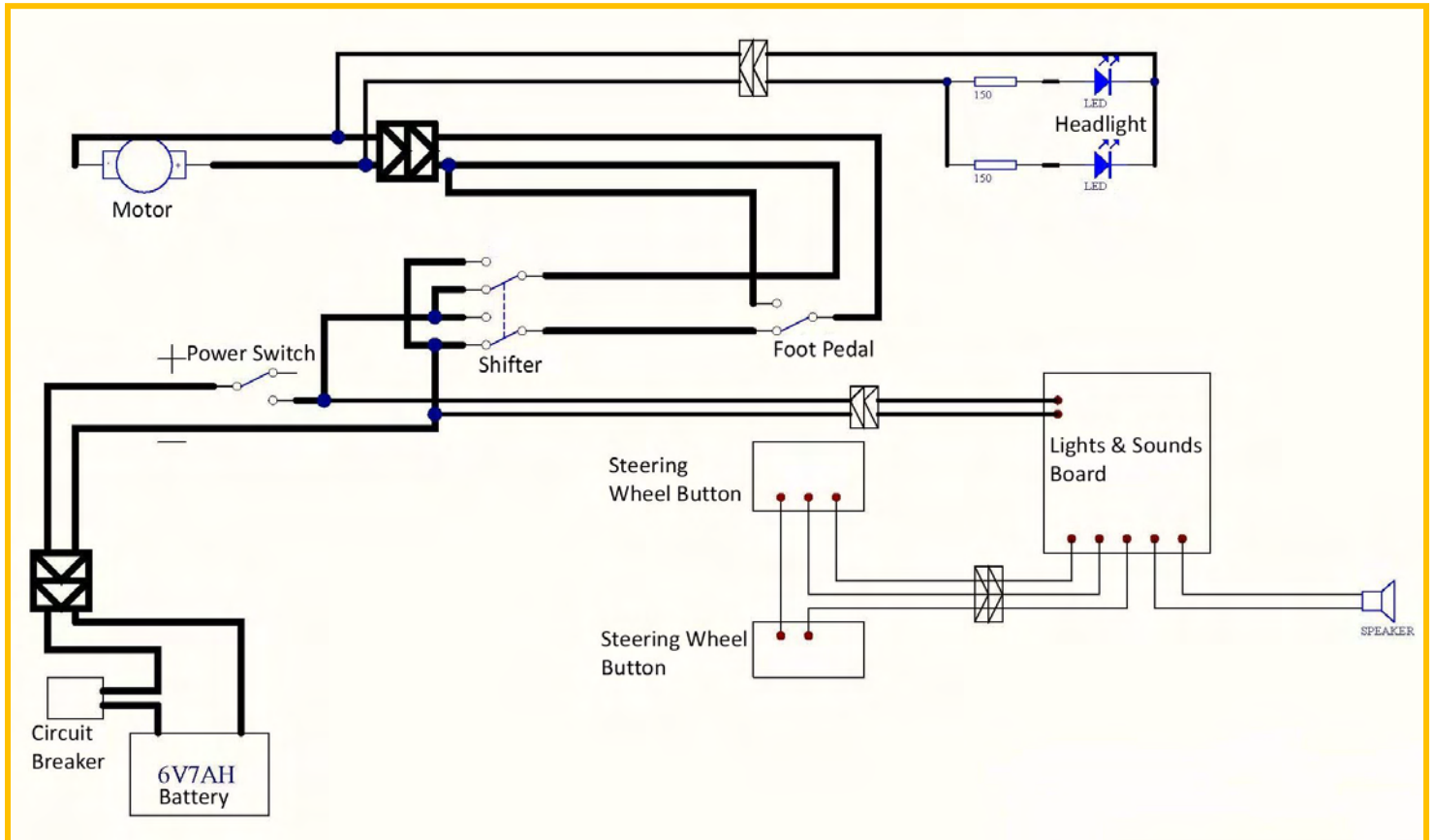
Replace the whole MP3 Circuit Board with a good one

Reverse above procedures to re-assemble back the vehicle

Customer Service Guide



VII) Wirings Schematic



Customer Service Guide



VIII) Exploded View

