

Model No.: TR1302
Item No.: 5187

WARNING:

- Maximum user weight is 30KG.
- Suitable for ages 3+ years.
- Please read manual carefully before use.
- Adult assembly required.
- This toy have no brake.
- Not to be used in traffic.
- Always wear a helmet and protective clothing when riding.
- Continuous adult supervision required when using this product.
- Charging the battery can only be done by adult at all times.
- Before first use, charge the battery for at least 8-12 hours, no more than 20 hours.
- Never driving in the road, street near motor vehicles, ramps, steep inclines, stairs, swimming pools, other sources of water and any else place dangerously.
- The toy should be used with caution since skill is required to avoid falls or collisions causing injury to the user or third parties.
- The transformers or battery charger used with the toy are to be regularly examined for damage to the cord, plug, enclosure and other parts, and in the event of such damage, they must not be used until that damage had been repaired.
- Please keep the manual and packaging for future reference as it contains important information.

Vehicle must be charged fully before use.

Failure to do so voids warranty.

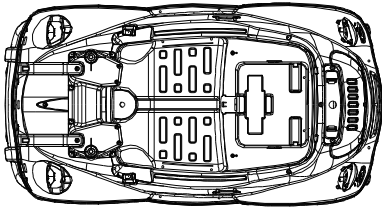
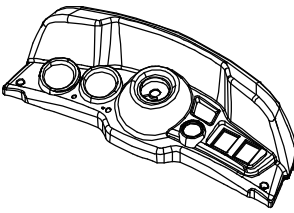
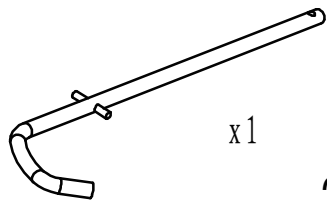
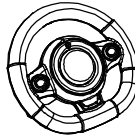
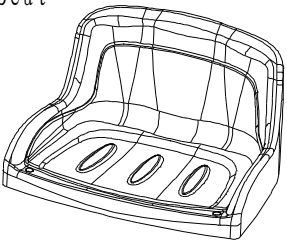
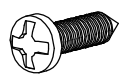
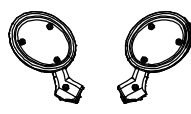
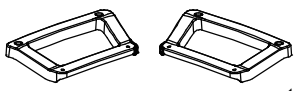
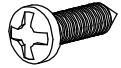
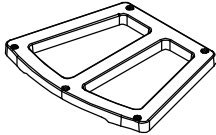
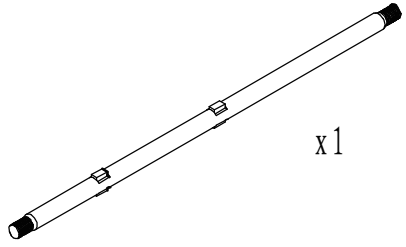
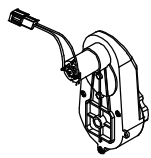
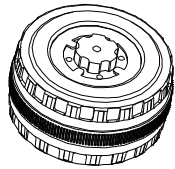
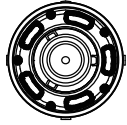
1. SPECIFICATIONS
2. LIST OF PARTS
3. Exploded drawing and ASSEMBLY STEP WITH PICTURE
4. FUNCTION OF VEHICLE AND CIRCUIT DIAGRAM
5. CHARGING FOR THE VEHICLE
6. FUSE
7. SAFETY PRECAUTIONS
8. MAINTAINING VEHICLE
9. TROUBLE-SHOOTING
10. DISPOSAL OF BATTERY

1. SPECIFICATIONS



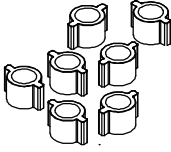
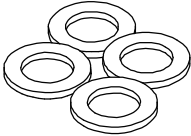
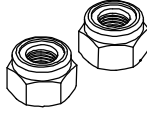
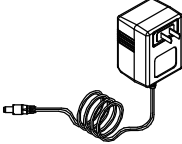
Suitable age	3+ years	Battery	DC 6V 4.5AH
Max. Load	30kg	Size of the car	1000*600*500mm
Speed	2.5-3Km/h	Carton size	980*540*360mm
Material	PP	Optimum Temperature	Below 40 ° C Avoid to use under burning sun
Charger	Input: Shown on the charger	Charging time	8-12 hours, at most 20 hours
		Fuse	F 5A, Self-resetting
	Output: 6V500mA	Operating life	300 charges

**PLEASE NOTE: IN CASE OF PRODUCT FAULT DO NOT RETURN THIS PRODUCT TO STORE.
PLEASE CONTACT HUNTER PRODUCTS CUSTOMER SERVICE TOLL FREE NUMBER: 1800 224 094
OR VISIT WWW.ELECTRICRIDEON.COM.AU**

2. LIST OF PARTS

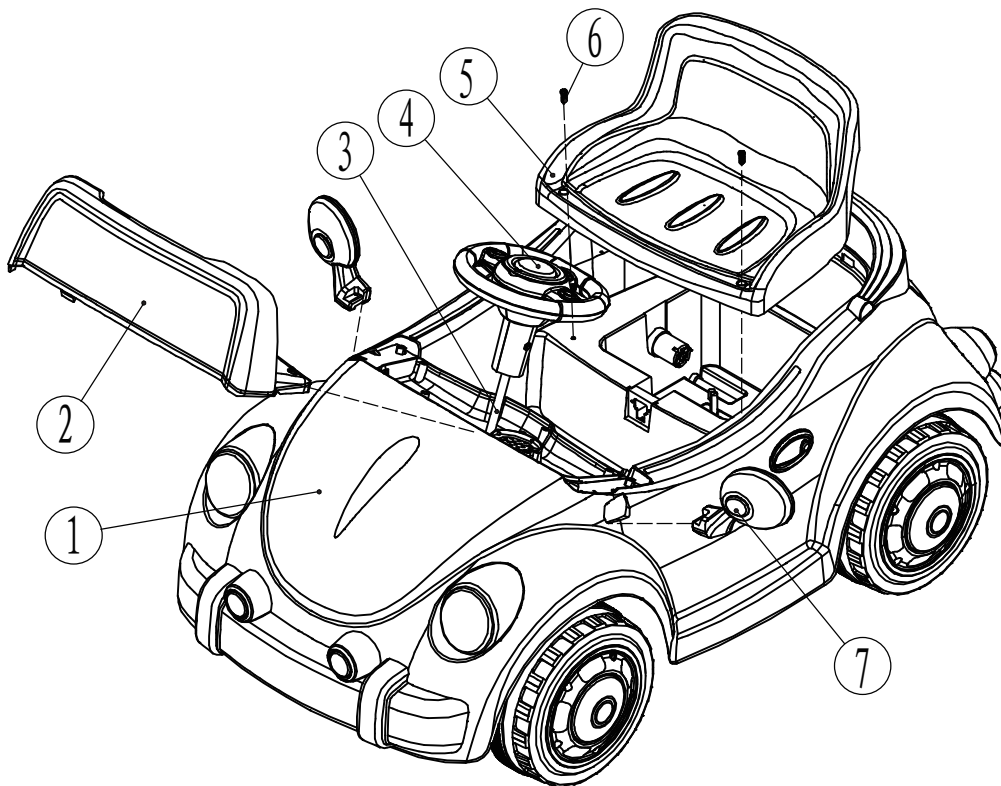
<p>Body</p>  <p>x1</p> <p>1</p>	<p>Dashboard cove</p>  <p>x1</p> <p>2</p>	
<p>Steering rod</p>  <p>x1</p> <p>3</p>	<p>Steering whee</p>  <p>x1</p> <p>4</p>	<p>Seat</p>  <p>x1</p> <p>5</p>
<p>Flat head screw (M4X16)</p>  <p>x2</p> <p>6</p>	<p>Rearview mirrors (left&right)</p>  <p>x1</p> <p>7</p>	<p>Side board of the body (left&right)</p>  <p>x1</p> <p>8</p>
<p>Flat head screw (M3.5X16)</p>  <p>x13</p> <p>9</p>	<p>Back bumper fram</p>  <p>x1</p> <p>10</p>	<p>Rear axle</p>  <p>x1</p> <p>11</p>
<p>Gear box</p>  <p>x1</p> <p>12</p>	<p>Driving wheel (1pc)</p>  <p>x1</p> <p>13</p>	<p>Wheel hub (4pcs)</p>  <p>x4</p> <p>14</p>

**PLEASE NOTE: IN CASE OF PRODUCT FAULT DO NOT RETURN THIS PRODUCT TO STORE.
PLEASE CONTACT HUNTER PRODUCTS CUSTOMER SERVICE TOLL FREE NUMBER: 1800 224 094
OR VISIT WWW.ELECTRICRIDEON.COM.AU**

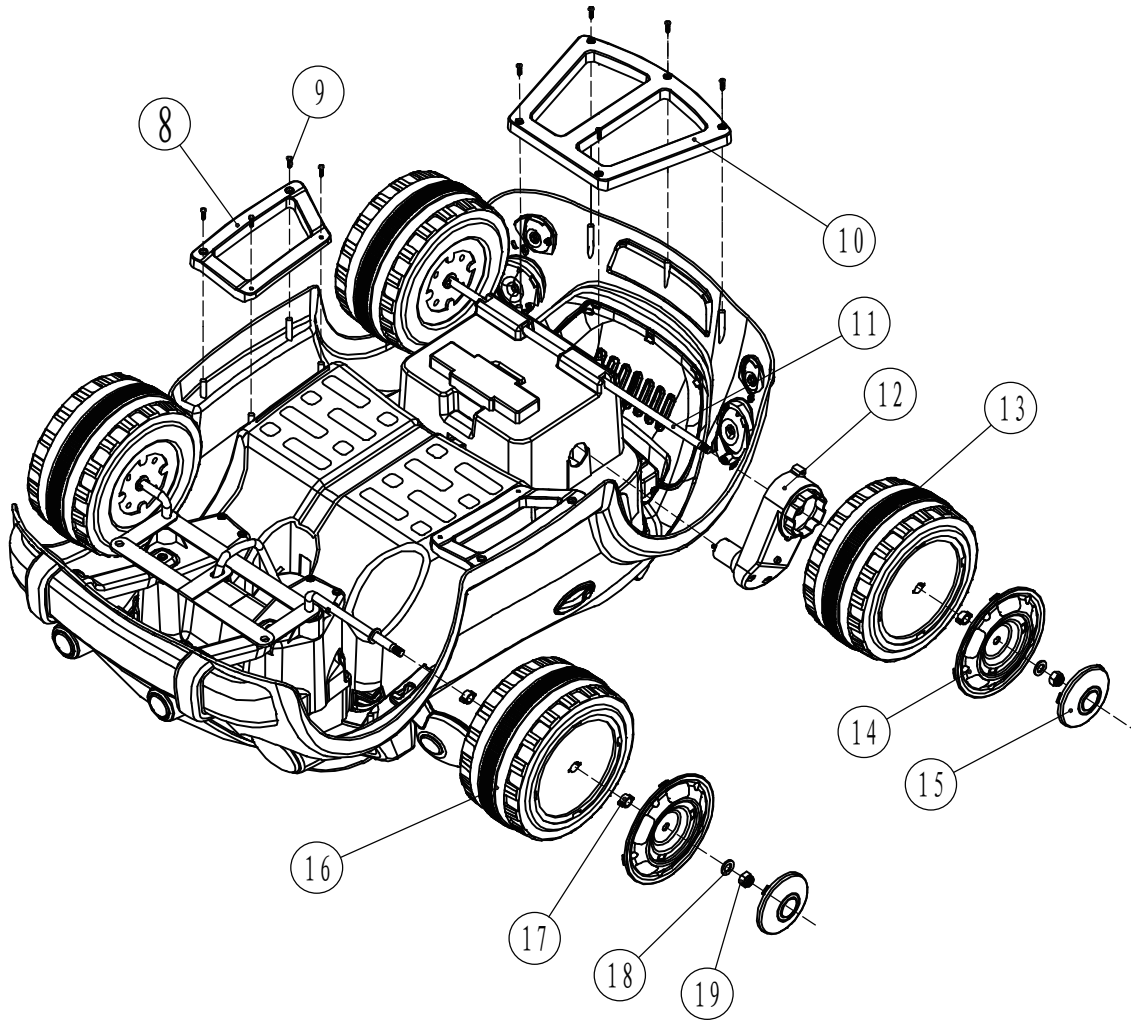
<p>Hub cap (4pcs)</p>  x4 <p style="text-align: right;">15</p>	<p>Wheel (3pcs)</p>  x3 <p style="text-align: right;">16</p>	<p>Axle sleeve (7pcs)</p>  x7 <p style="text-align: right;">17</p>	
<p>Washer (4pcs)</p>  x4 <p style="text-align: right;">18</p>	<p>Nut (2pcs)</p>  x2 <p style="text-align: right;">19</p>	<p>Charger x1</p>  x1 <p style="text-align: right;">20</p>	

3. Exploded drawing and ASSEMBLY STEP WITH PICTURE

(1) Exploded drawing and part name



**PLEASE NOTE: IN CASE OF PRODUCT FAULT DO NOT RETURN THIS PRODUCT TO STORE.
PLEASE CONTACT HUNTER PRODUCTS CUSTOMER SERVICE TOLL FREE NUMBER: 1800 224 094
OR VISIT WWW.ELECTRICRIDEON.COM.AU**

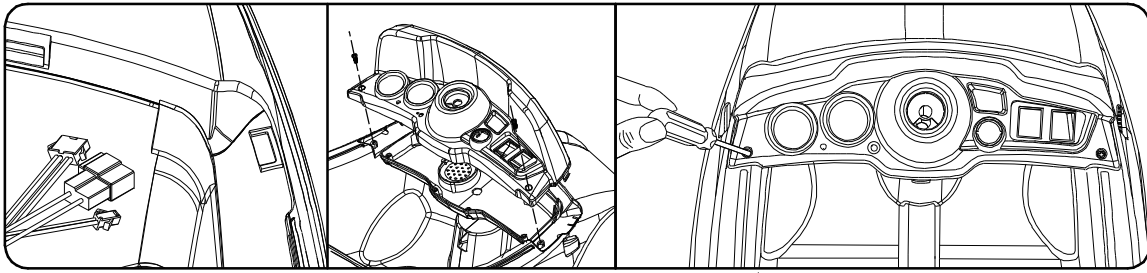


1	Body	8	Side board of the body (left&right)	15	Hub cap
2	Dashboard cover	9	Flat head screw (M3.5X16)	16	Wheel
3	Steering rod	10	Back bumper frame	17	Axle sleeve
4	Steering wheel	11	Rear axle	18	Washer
5	Seat	12	Gear box	19	Nut
6	Flat head screw (M4X16)	13	Driving wheel		
7	Rearview mirrors (left&right)	14	Wheel hub		

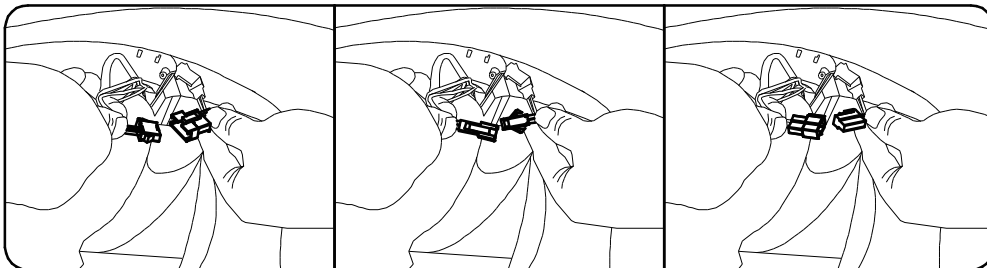
**PLEASE NOTE: IN CASE OF PRODUCT FAULT DO NOT RETURN THIS PRODUCT TO STORE.
PLEASE CONTACT HUNTER PRODUCTS CUSTOMER SERVICE TOLL FREE NUMBER: 1800 224 094
OR VISIT WWW.ELECTRICRIDEON.COM.AU**

(2) ASSEMBLY STEP WITH PICTURE

1. Assemble the dashboard cover and the frame



1.1. Insert the plug of the dashboard cover into the body. Lock the dashboard cover on the suitable place, then tighten the screws.



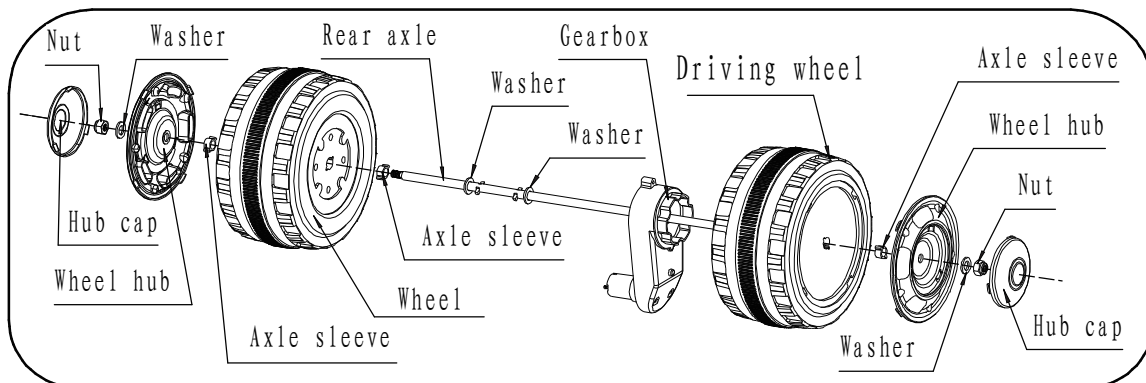
1.2. Turn over the body, connect the plug under the body.



1.3. Fix the board on both side of the body with screws.

Join the back bumper frame together with the back bumper by screws.

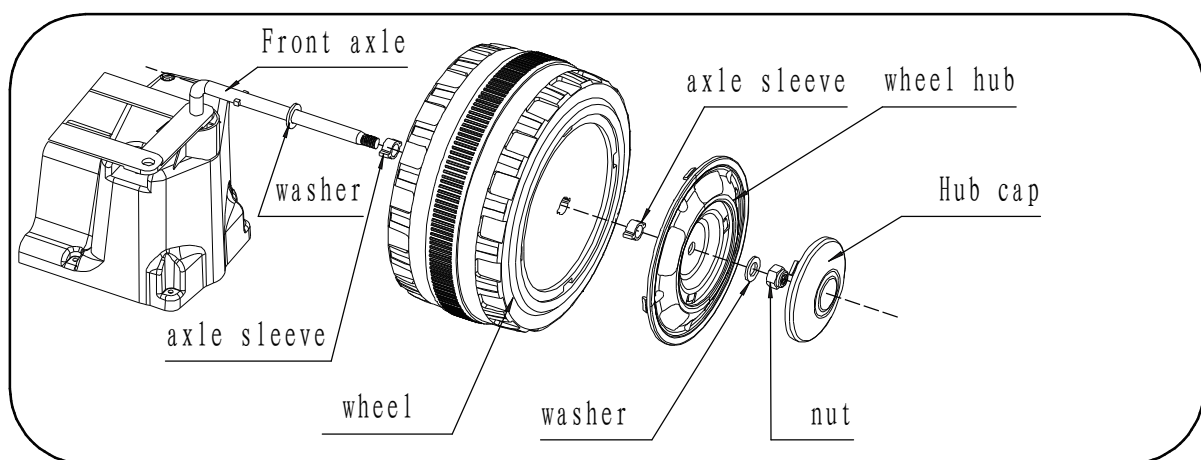
2. Assemble the black wheel



**PLEASE NOTE: IN CASE OF PRODUCT FAULT DO NOT RETURN THIS PRODUCT TO STORE.
PLEASE CONTACT HUNTER PRODUCTS CUSTOMER SERVICE TOLL FREE NUMBER: 1800 224 094
OR VISIT WWW.ELECTRICRIDEON.COM.AU**

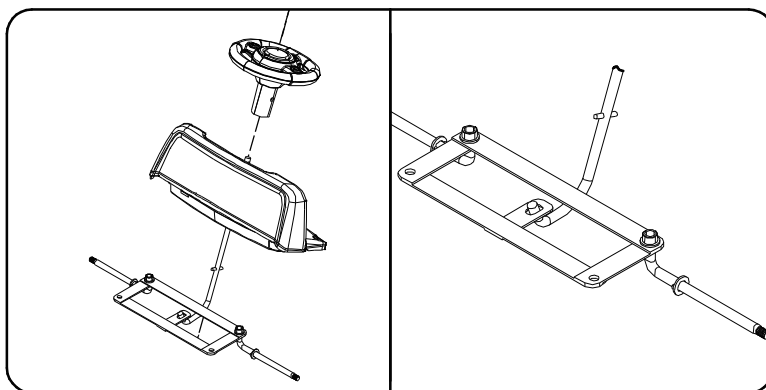
- 2.1. Put the axle sleeve on both side of the wheel. (just 1pc axle sleeve for the driving wheel).
- 2.2. Take the parts away from the rear axle, then put the axle through the body and put the gear box through the rear axle on the right side (when reverse side up).
- 2.3. Put the driving wheel through the back axle and fix it with washer, nut and the hub cap in turn.
- 2.4. Put the washer, wheel and another washer through the back axle on the other side in turn, then fix them with nut and hub cap.

3. Assemble the front wheel



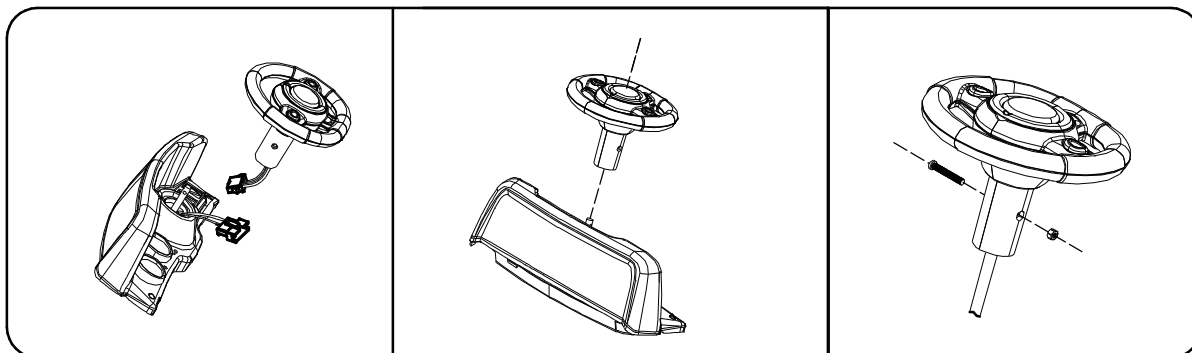
- 3.1 Take one piece of nut and one piece of washer away from one side of the bogie. Put a wheel through the front axle, then fix it with washer, nut and hub cap in turn.
- 3.2 The other side is same as above

4. Assemble the steering wheel and the rearview mirror

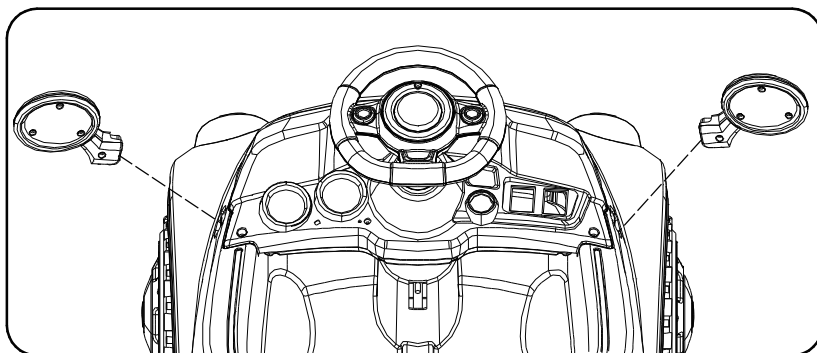


**PLEASE NOTE: IN CASE OF PRODUCT FAULT DO NOT RETURN THIS PRODUCT TO STORE.
PLEASE CONTACT HUNTER PRODUCTS CUSTOMER SERVICE TOLL FREE NUMBER: 1800 224 094
OR VISIT WWW.ELECTRICRIDEON.COM.AU**

4.1 Turn over the vehicle again, now it is right side. Put the steering rod through the dashboard cover and hookup the bogie.

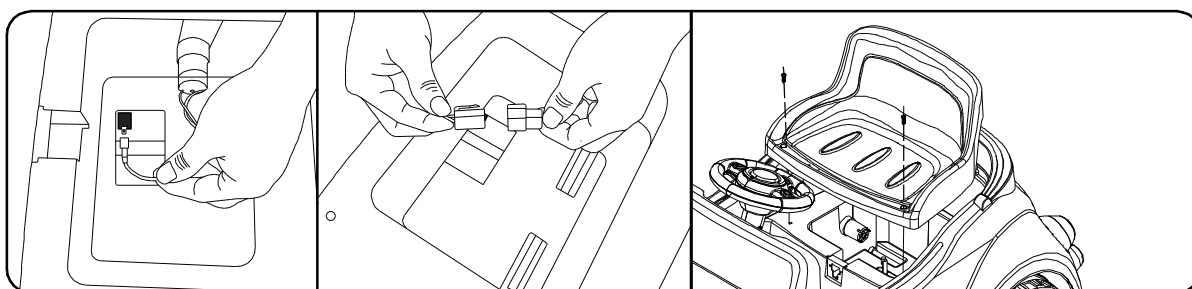


4.2 Take away the bolt and the nut in the steering wheel, connect the plug as picture, then put the steering wheel on the steering rod. Place the bolt through the steering wheel and fix it with nut.



4.3 Lock the rearview mirrors(left&right) on both sides of the body.

5. Plug in the battery, assemble the seat



5.1. Plug in the battery first, red to red, then connect the plug of the gear box with the plug of the body.

**PLEASE NOTE: IN CASE OF PRODUCT FAULT DO NOT RETURN THIS PRODUCT TO STORE.
PLEASE CONTACT HUNTER PRODUCTS CUSTOMER SERVICE TOLL FREE NUMBER: 1800 224 094
OR VISIT WWW.ELECTRICRIDEON.COM.AU**

5.2. Take away the two screws from the body of the vehicle, then place the seat , and fix it by those two screws.

WARNING

Before using the vehicle, confirm the following has been done:

The vehicle has been assembled strictly according to the steps that the manual described.

The battery has been fixed and inserted correctly and the vehicle has been charged for at least 8-12 hours, no more than 20 hours.

That all screws are tightened.

Let your children know necessary safety rules before allowing them to use the product.

Reduce the risk of injury:

Direct adult supervision required, without leaving children alone when driving.

Always wear shoes.

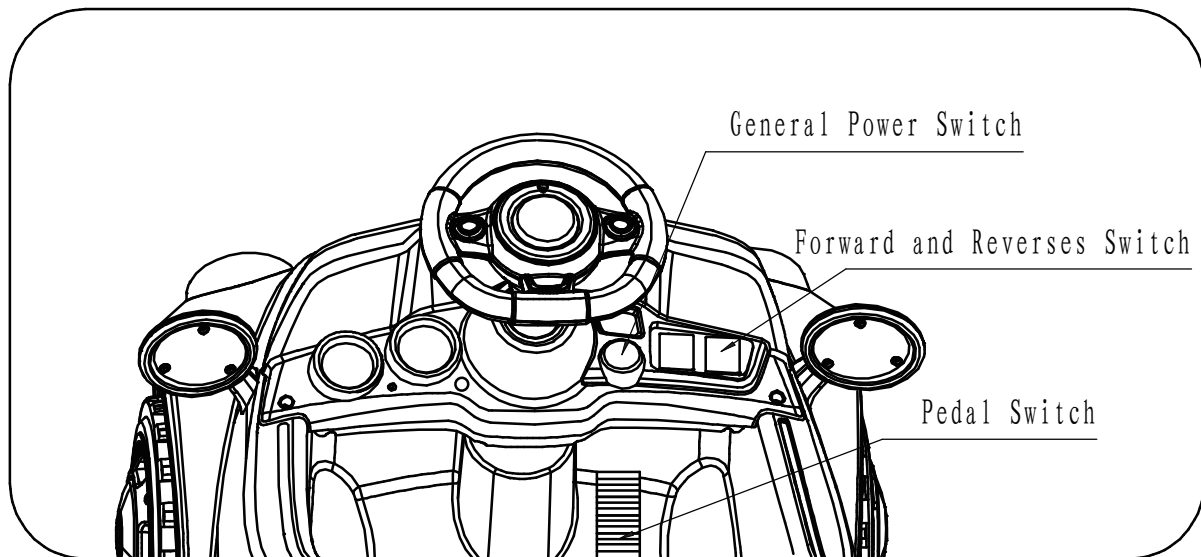
Please don't overweight, the maximum weight is 30kg.

Most of the material is plastic, so please always keep far away from fire source.

Never driving in the road, street near motor vehicles, ramps, steep inclines, stairs , swimming pools, other sources of water and any else place dangerously.

**PLEASE NOTE: IN CASE OF PRODUCT FAULT DO NOT RETURN THIS PRODUCT TO STORE.
PLEASE CONTACT HUNTER PRODUCTS CUSTOMER SERVICE TOLL FREE NUMBER: 1800 224 094
OR VISIT WWW.ELECTRICRIDEON.COM.AU**

4. FUNCTION OF VEHICLE AND CIRCUIT DIAGRAM



1. Introduction of the functions

(1) Turn on the general power switch first, the vehicle can move .

(2) Forward

Press the "Forward and Reverse switch" to the "Forward" position.

Press the pedal.

The vehicle drives forward.

(3) Stop

Remove foot from the accelerator pedal to stop the car.

(4) Reverse

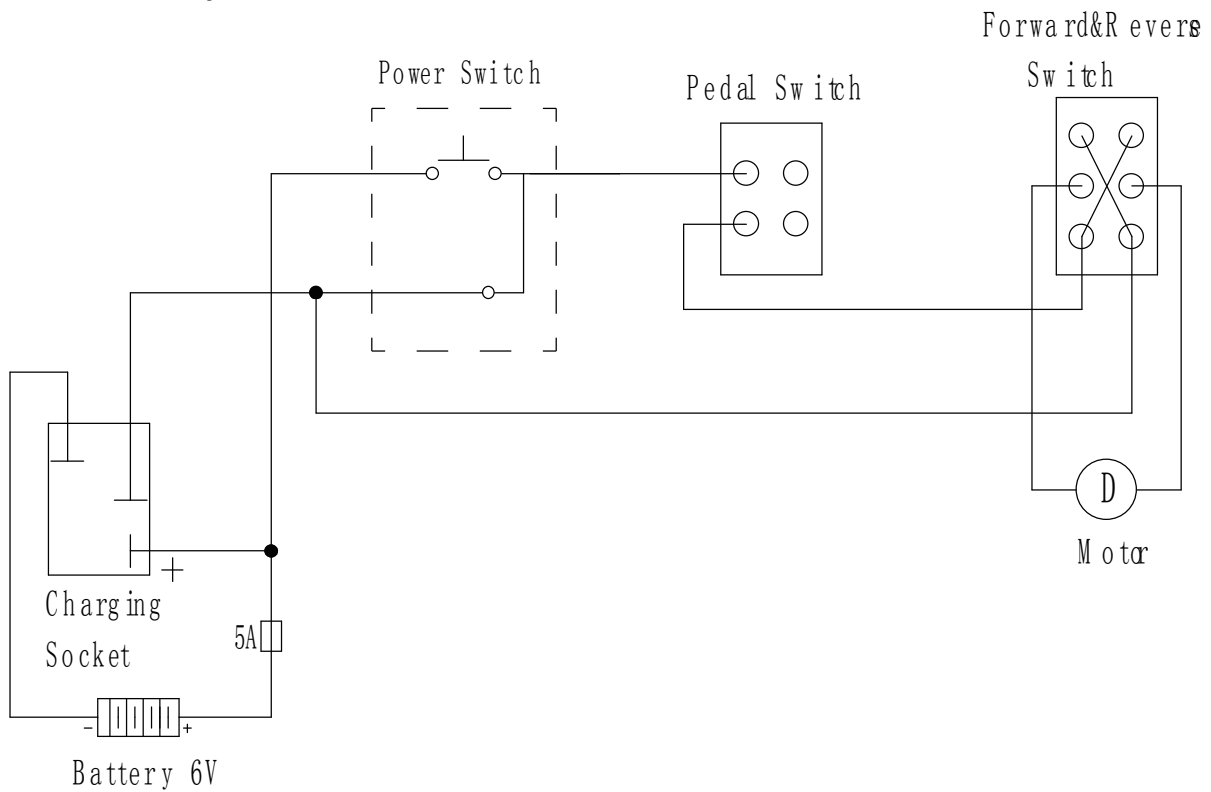
Press the "Forward and Reverse switch" to the "Reverse" position.

Press the pedal.

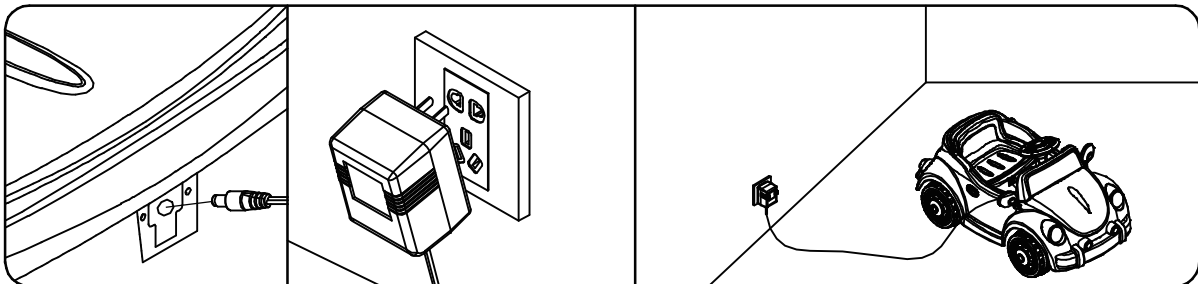
The vehicle drives backward.

**PLEASE NOTE: IN CASE OF PRODUCT FAULT DO NOT RETURN THIS PRODUCT TO STORE.
PLEASE CONTACT HUNTER PRODUCTS CUSTOMER SERVICE TOLL FREE NUMBER: 1800 224 094
OR VISIT WWW.ELECTRICRIDEON.COM.AU**

2. Circuit diagram



5. CHARGING THE VEHICLE



- Press the power switch to OFF position to turn the power off.
- Plug the charger into the charging socket which under the seat.
Plug the charger into a 240V mains power wall outlet.
Before first use, you should charge the battery for 8-12 hours, attentively no more than 20 hours to avoid damage the battery and the charger.
- Never drain battery completely or to a crawling speed, recharge the battery when a decrease in speed and power is noticed warranty will be voided if misuse has occurred.

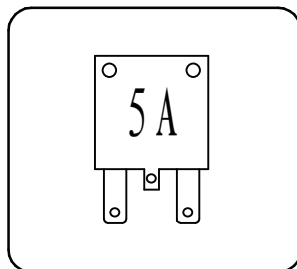
**PLEASE NOTE: IN CASE OF PRODUCT FAULT DO NOT RETURN THIS PRODUCT TO STORE.
PLEASE CONTACT HUNTER PRODUCTS CUSTOMER SERVICE TOLL FREE NUMBER: 1800 224 094
OR VISIT WWW.ELECTRICRIDEON.COM.AU**

- After using or at least once a month, recharge for 8 to 12 hours, no more than 20 hours, if not used regularly.
- Battery charging must be done by adults only. Never allow children to charge the battery. A child could be injured by the electricity involved in charging the battery.
- Please don't connect the wires to a short circuit.
The charger and the battery are not a toy. Do not allow children to play with the charger and the battery.
Only operate the battery and charger specified according to the manual instructions.
- Please don't open the battery and the charger.
- Always secure the battery with the bracket. Or battery can be fall out and injure children if vehicle tips over.
- The battery must be handled and operated by adults only. The battery is heavy and contains sulfuric acid(electrolyte). Dropping the battery could result in serious injury.
- Before charging the battery check if wear or damage to the battery, charger, the connectors and other parts. Any damage is found, the charger should be repaired or replace immediately. Do not use a damaged charger.
- It is normal for the adaptor to feel warm during charging, but if the chargr feels too hot, stop charging right now and check the battery and adaptor.

6. FUSE

The vehicle is equipped with a self-resetting fuse. When the vehicle is overloaded or operated incorrectly, the self-resttting fuse will be cut off for about 5-20 seconds before resuming.

The self-resetting fuse is under the seat(Refer to the picture.)



To avoid electric shock, follow these guidelines:

PLEASE DON'T overload the vehicle. The maximum load is 30 Kg.

**PLEASE NOTE: IN CASE OF PRODUCT FAULT DO NOT RETURN THIS PRODUCT TO STORE.
PLEASE CONTACT HUNTER PRODUCTS CUSTOMER SERVICE TOLL FREE NUMBER: 1800 224 094
OR VISIT WWW.ELECTRICRIDEON.COM.AU**

PLEASE DON'T tow anything behind the vehicle.

PLEASE DON'T drive the vehicle up the steep slope.

PLEASE DON'T drive into rugged objects, which may cause the wheels to spin, causing the motor to overheat.

PLEASE DON'T drive in very hot weather, components may overheat.

PLEASE DON'T allow water or any other liquids to come in contact with the battery or other electric components.

PLEASE DON'T tamper with the electric system. Or maybe create a short circuit, causing the fuse to trip.

7. SAFETY PRECAUTIONS

01. While riding, adult supervision is required all the time.
02. Always wear a helmet when driving.
03. Please don't drive near road or on the footpath.
04. It is not recommended to drive the vehicle on wet surface or on slope greater than 15-degree.
05. It is recommended to drive this vehicle on smooth surface only,
06. Please don't driving this vehicle outdoors when it is raining.
07. Make sure that the vehicle stop completely before changing direction from orward to reverse.
08. Please don't allow children to operate the charger or play with the battery
09. Clean the vehicle with a dry cloth only.
10. Please follow the correct weight and age limits allowed to drive this vehicle.
11. It is prohibited to change th e circuit or add other electric parts.
12. Adults must teach their children about safe driving procedures.
13. Please turn the power off when not in use.
14. Check the seat to ensure it has been fitted and secured with a bolt before driving.
15. Inspect all wires and connections of the vehicle periodically.
16. Charging the battery should only be done by adults.
17. Charging plug is located underneath the seat.
18. In order to avoid accidents, please ensure the vehicle is safe before driving.

**PLEASE NOTE: IN CASE OF PRODUCT FAULT DO NOT RETURN THIS PRODUCT TO STORE.
PLEASE CONTACT HUNTER PRODUCTS CUSTOMER SERVICE TOLL FREE NUMBER: 1800 224 094
OR VISIT WWW.ELECTRICRIDEON.COM.AU**

19. Please don't let any child touch the wheels or be near them when the car is moving.

8. MAINTAINING VEHICLE

- It is parent's responsibility to check main parts of the vehicle before using. Regularly examine the vehicle for potential hazards, such as: the battery, charge cable and cord, plug and ensure screws are tightened, If there are any damages, the vehicle must not be used until these damages have been properly repaired or replaced.
- Occasionally use a lightweight oil to lubricate moving parts such as wheels and steering linkages.
- Keep the vehicle in an upturned position, do not overturn or incline it. It is recommended to store the vehicle indoors when not in use, If stored outdoors, the vehicle needs to be covered by a tarp for protection against weather elements.
- This toy should be kept away from fire, Keep the vehicle away from sources of heat, such as stoves and heaters, or plastic parts may melt. While charging ensure all flammable liquids are well away from the vehicle.
- ADULTS ONLY: recharge the battery after each use, Recharge the battery at least once a month when the vehicle is not being used.
- Use a soft, dry cloth to clean the vehicle.
- Please don't use chemical liquid to clean the plastic surface of the vehicle.
- Please don't wash the vehicle with soap and water.
- Please don't drive the vehicle in rainy or snowy weather. Water will damage the motor, electric system and the battery.
- When not in use all the electrical source should be turned off. Press the power switch to OFF position to turn the power off, and disconnect the battery connection under the seat.
- Please don't change the structure of this product and circuit system.
- Please don't use the vehicle for other purposes except riding.

**PLEASE NOTE: IN CASE OF PRODUCT FAULT DO NOT RETURN THIS PRODUCT TO STORE.
PLEASE CONTACT HUNTER PRODUCTS CUSTOMER SERVICE TOLL FREE NUMBER: 1800 224 094
OR VISIT WWW.ELECTRICRIDEON.COM.AU**

9. TROUBLE-SHOOTING

PROBLEM	POSSIBLE CAUSE
<p>The 6-Volt battery will not recharge</p>	<p>(1) Battery connector is loose. Make sure the battery connector is firmly plugged in.</p> <p>(2) The 6-Volt battery will not recharge. Make sure the charger is plugged into a 240 Volt wall outlet and the power flow to the outlet is turned on.</p> <p>(3) Charger is not plugged in. Make sure the charger is plugged into a 240 Volt wall outlet and the power flow to the outlet is turned on.</p> <p>(4) Check and replace fuse if necessary.</p>
<p>The vehicle does not run</p>	<p>(1) The battery is dead. Have you properly maintained the battery according to the directions? Is the battery old? Your battery may need to be replaced. Contact Customer Service or Importer</p> <p>(2) Electrical system is damaged. Water may have corroded the system or loose dirt, gravel or sand may have jammed the switch.</p> <p>(3) Motor is damaged. Contact Customer Service or Importer</p> <p>(4) Battery connector is loose. Make sure the battery connector is firmly plugged in.</p> <p>(5) The 6 Volt battery will not recharge. Make sure the charger is plugged into a 240 Volt wall outlet and the power flow to the outlet is turned on.</p> <p>(6) Charger is not plugged in. Make sure the charger is plugged into a 240 Volt wall outlet and the power flow to the outlet is turned on.</p> <p>(7) Check and replace fuse if necessary.</p>

**PLEASE NOTE: IN CASE OF PRODUCT FAULT DO NOT RETURN THIS PRODUCT TO STORE.
PLEASE CONTACT HUNTER PRODUCTS CUSTOMER SERVICE TOLL FREE NUMBER: 1800 224 094
OR VISIT WWW.ELECTRICRIDEON.COM.AU**

PROBLEM	POSSIBLE CAUSE
The vehicle does not run for very long	<p>(1) The battery may be undercharged. You may not be charging the battery for long enough. After each use, or at a minimum of once a month, charge the battery for a full 10 - 12 hours. DO NOT leave the battery on the charger for more than 20 hours.</p> <p>(2) The battery is old. The 6 Volt battery will eventually lose the ability to hold a charge. Depending on the amount of use, and varying conditions, the battery should operate for one to three years. Replace the battery with a new 6 Volt battery.</p> <p>(3) Available through Customer Service or Importer.</p>
Battery buzzes or gurgles when charging	<p>This is normal and not a cause for concern. It may also be silent when charging, which is also normal.</p>
The vehicle runs sluggishly or beeping occurs	<p>(1) The battery needs recharging. After each use, or at a minimum of once a month, charge the battery for a full 10 - 12 hours. DO NOT leave the battery on the charger for more than 20 hours.</p> <p>(2) The battery is old. The 6 Volt battery will eventually lose the ability to hold a charge. Depending on the amount of use, and varying conditions, the battery should operate for one to three years. Replace the battery with a new 6 Volt battery.</p> <p>(3) The vehicle is overloaded. Maximum weight is 30kg. DO NOT overload the vehicle. DO NOT tow anything behind the vehicle.</p>

**PLEASE NOTE: IN CASE OF PRODUCT FAULT DO NOT RETURN THIS PRODUCT TO STORE.
PLEASE CONTACT HUNTER PRODUCTS CUSTOMER SERVICE TOLL FREE NUMBER: 1800 224 094
OR VISIT WWW.ELECTRICRIDEON.COM.AU**

Disposal Of Battery

Disposal Of Battery



- Your sealed lead-acid battery must be recycled or disposed of in an environmentally sound manner.
- Do not dispose of your lead-acid battery in a fire. The battery may explode or leak.
- Do not dispose of a lead-acid battery in your regular, household trash. The incineration, land filling or mixing of sealed lead-acid batteries with household trash is prohibited by law.
- Return an exhausted battery to your local approved lead-acid battery recycle, such as a local seller of automotive batteries.
- Contact your local waste management officials for other information regarding the environmentally sound recycling and disposal of lead-acid batteries.

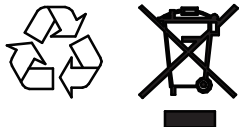
PLEASE NOTE:
IN CASE OF PRODUCT FAULT
DO NOT RETURN THIS PRODUCT
TO STORE. PLEASE CONTACT
Hunter Products Customer Service
TOLL FREE NUMBER:
1800 224 094
OR VISIT WWW.ELECTRICRIDEON.COM.AU

FOR CUSTOMER SERVICE OR PRODUCT ENQUIRIES
PLEASE CONTACT Hunter Products Customer Service
TOLL FREE NUMBER: 1800 224 094
OR VISIT WWW.ELECTRICRIDEON.COM.AU
MADE IN CHINA

**PLEASE NOTE: IN CASE OF PRODUCT FAULT DO NOT RETURN THIS PRODUCT TO STORE.
PLEASE CONTACT HUNTER PRODUCTS CUSTOMER SERVICE TOLL FREE NUMBER: 1800 224 094
OR VISIT WWW.ELECTRICRIDEON.COM.AU**

10. DISPOSAL OF BATTERY

Disposal of Battery



- Your sealed lead-acid battery must be recycled or disposed of in an environmentally sound manner.
- Do not dispose of your lead-acid battery in a fire. The battery may explode or leak.
- Do not dispose of lead-acid battery in your regular household trash. The incineration land filling or mixing of sealed lead-acid batteries with household trash is prohibited by law.
- Return an exhausted battery to your local approved lead-acid battery recycle, Such as a local seller of automotive batteries.
- Contact your local waste management officials for other information. regarding the environmentally sound recycling and disposal of lead-acid batteries.

PLEASE NOTE:
IN CASE OF PRODUCT FAULT
DO NOT RETURN THIS PRODUCT
TO STORE. PLEASE CONTACT
Hunter Products Customer Service
TOLL FREE NUMBER:
1800 224 094
OR VISIT WWW.ELECTRICRIDEON.COM.AU

FOR CUSTOMER SERVICE OR PRODUCT ENQUIRIES
PLEASE CONTACT Hunter Products Customer Service
TOLL FREE NUMBER: 1800 224 094
OR VISIT WWW.ELECTRICRIDEON.COM.AU
MADE IN CHINA

**PLEASE NOTE: IN CASE OF PRODUCT FAULT DO NOT RETURN THIS PRODUCT TO STORE.
PLEASE CONTACT HUNTER PRODUCTS CUSTOMER SERVICE TOLL FREE NUMBER: 1800 224 094
OR VISIT WWW.ELECTRICRIDEON.COM.AU**