

# MOTORIZED

MOTORIZED



## **JE1166 Bentley Troubleshooting Guide**

Please follow the directions in the attached service guide to check the connections on your ride on. Most times it is a loose plug or switch that causes electric ride's to stop working.

**Keep in mind the ride will not operate if the power adaptor/charger cable is plugged into the ride, this is a safety feature to ensure a child does not take off while it's plugged in and damage it.**

**Disconnect the charger from the car before trying to operate it.**

**To rule out a faulty fuse:**

1. Under the seat in the battery compartment please disconnect the short cable from the red terminal of the battery.
2. Then disconnect the long cable that comes from the ride on wiring to the fuse
3. Connect this cable directly to the red terminal of the battery.

So what you have left over is the small black fuse and a short cable attached to it that are not connected to the ride. This is bypassing the fuse, try this to see if it is in fact a faulty fuse.

***If you have a ride on that is 18+ months old and after following these directions you cannot get it going we recommend removing the battery and having the battery & charger tested by a professional.***

***Batteryworld.com.au offer this service over the counter in your local outlet.***

## TROUBLE SHOOTING GUIDE

ITEM NO: JE1166

DESCRIPTION: BENTLEY CAR



STEP 1



STEP 2



STEP 3



STEP 4

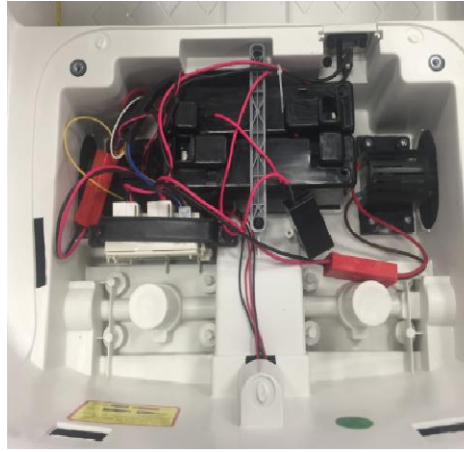


STEP 5

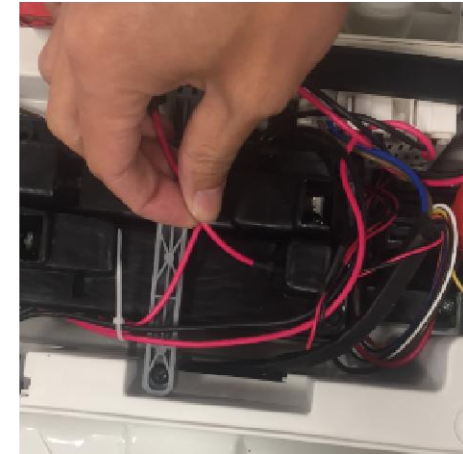
1. Per above steps to check the connection of Forward&Reverse, High-Low Speed and On-off Switches, be careful when use a straight screwdriver.



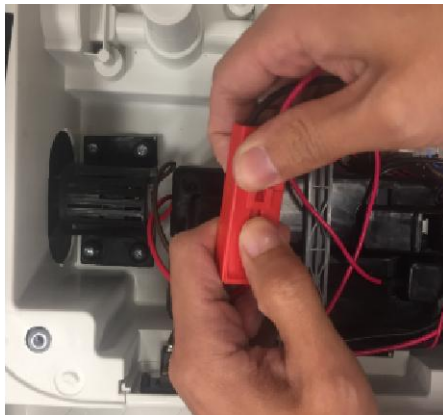
STEP 1



STEP 2



STEP 3 (Battery)

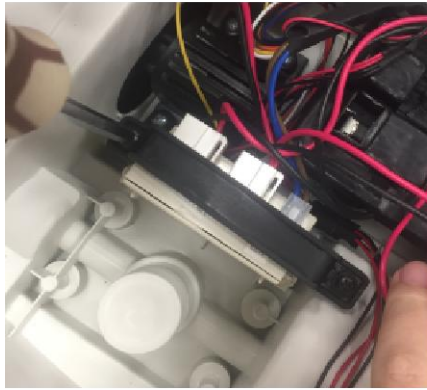


STEP 4 (Gearbox cable)

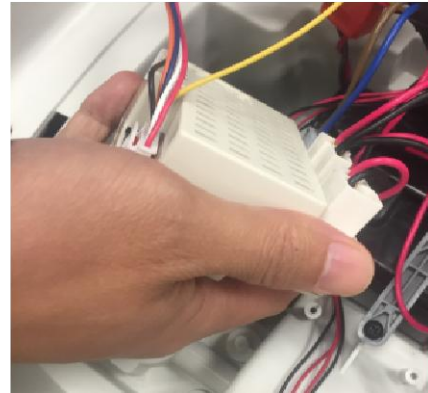


STEP 5 (Gearbox cable)

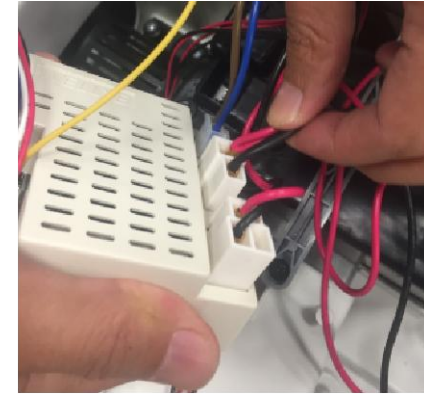
2. Per above steps to check the cables connection of Batteries and Gearboxes.



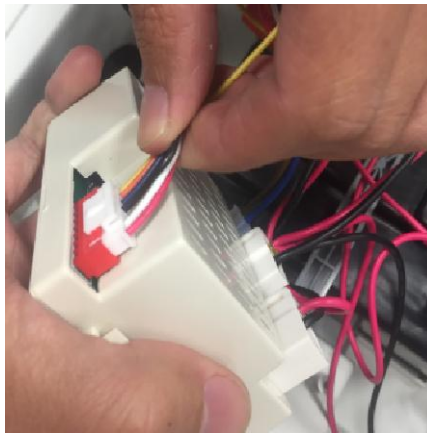
STEP 1



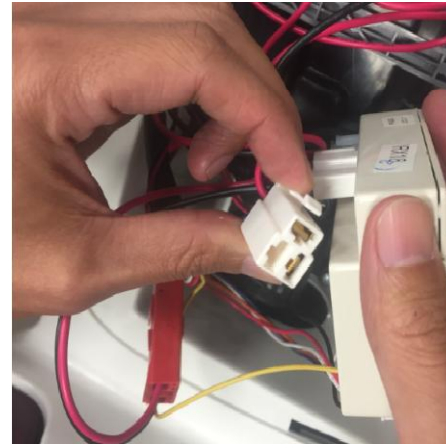
STEP 2



STEP 3



STEP 4



STEP 5



STEP 6

3. Per above steps to check the connection of remote control receiver and the charging hole.

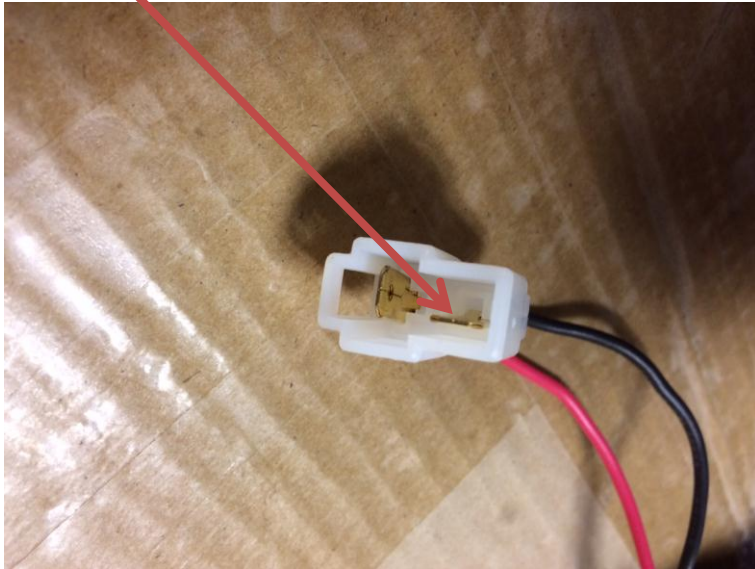


Hunter  
Products

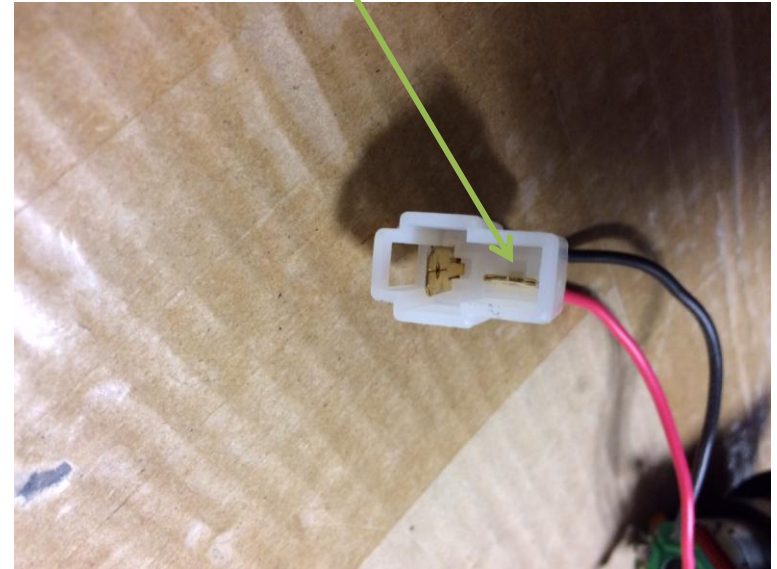
# MOTOR PLUG – PIN TROUBLESHOOT

**No.** Pin pushed to side.

When plugged together the pin is not connecting with other plug.



**Yes.** Pin is central.



**MOTORIZED**