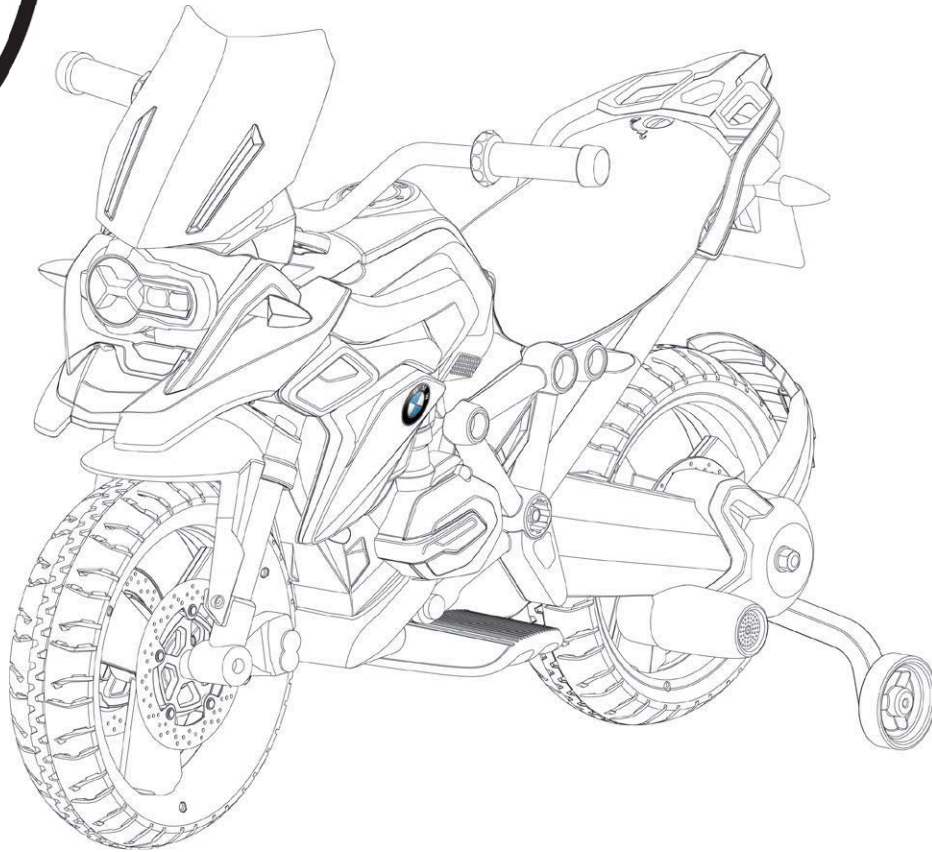




6V BMW Motorcycle



Owner's Manual and Assembly Instructions

Model #: W348

Read and understand the entire manual before assembly and operation. The vehicle must be assembled by an adult who has read and understands the instructions.

Made in China.

Styles and colours may vary. Call 1-800-224-094 for assistance and replacement parts.

IMPORTANT:

Save this manual with your sales receipt.



Introduction

Thank you for purchasing this RollPlay vehicle. We hope the rider enjoys it for miles to come. Please read this instruction guide carefully before assembling and operating the vehicle. Please contact Hunter Products Pty Ltd at www.electricrideon.com.au or Call at 1800 224 094 with any enquiries or questions.

Specifications:

BATTERY	6V 7AH
MOTOR	6V 20W
AGE	3 Years and Up
MAX WEIGHT	35 KG (77 lbs)
PRODUCT SIZE	101.5 x 57.5 x 68.5 cm ()
SPEED	4.0 km/h (2.5 MPH)
RECHARGE TIME	8-12 Hours
TYPICAL RUN TIME	1-2 Hours
CHARGER OUTPUT	DC 7.0V

Table of Contents³

Safety	4
Parts	6
Charging Instructions	7
Assemble the Front Wheel	8
Assemble the Rear Fork	9
Assemble the Rear Wheel	10
Assemble the Support Wheels	11
Attach the Mud Guard	12
Attach the License Plate	13
Assemble the Handle Bars	14
Assemble the Windshield	15
Assemble the Baggage Rack	16
Attach the Exhaust Pipe	17
User Information	18
Maintenance	19
General Care	20
Troubleshooting Guide	21
Service and Repairs	24
Warranty	25



WARNING: SAFETY RIDING RULES

The user must follow all safety rules and guidelines, or serious injury or death may occur to the user.

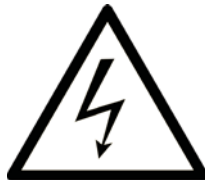
- Always use common sense and safe practices when using the vehicle. The user must be at least 3 years old and weigh no more than 35kg (77 lbs).
- This product contains small parts that are for adult assembly only. Keep small children away when assembling. Remove and dispose of all protective material and plastic bags before assembly.
- Riding the vehicle without a helmet. Riders must always wear a fitted helmet that complies with Australian Standard **AS/NZS 2063:2008**.
- Only sit on the seat in the vehicle.
- Do not allow more than one rider.
- Do not overload the vehicle. Do not remove the weight restriction decals.
- Do not pull the vehicle with another vehicle or similar device.
- Keep body parts such as hands, legs, hair and clothing away from moving parts. Moving parts can cause serious injury.
- Always wear shoes in the vehicle.
- Do not operate near streets or motor vehicles.
- Do not operate near drop-offs such as steps, steep inclines or hills. Operate on relatively level ground.
- Do not operate near water, swimming pools or other fluids.
- Do not operate in dangerous weather conditions such as rain or snow.
- Do not operate near loose dirt, mud, sand or fine gravel.
- Do not operate near flammable vapors (gasoline, paint thinner, acetone, etc.).
- Always use the vehicle in a safe, secure environment with adult supervision.

PREVENT INJURIES AND DEATHS:

- **NEVER LEAVE CHILD UNATTENDED. ALWAYS** keep child in view when child is in vehicle. Direct adult supervision is **REQUIRED**.
- **NEVER** use in roadways, near cars, on or near steep inclines or steps, swimming pools or other bodies of water.
- **ALWAYS** wear shoes.
- **ALWAYS** sit on the seat.
- **RISK OF FIRE.** Do not bypass.



- Contact exposure to battery leakage (lead acid) may cause serious injury. Immediately contact your doctor if exposure occurs. If the chemical is on the skin, flush immediately with cool water for 15 minutes. If the chemical is swallowed, immediately give the person water or milk. Do not give water or milk if the person is vomiting or has decreased alertness. Do not induce vomiting.



- Tampering with or modifying the electric circuit system may cause shock, fire or explosion. It could permanently damage the system. Keep the charger housing closed to prevent exposed wiring, which may cause electric shock.

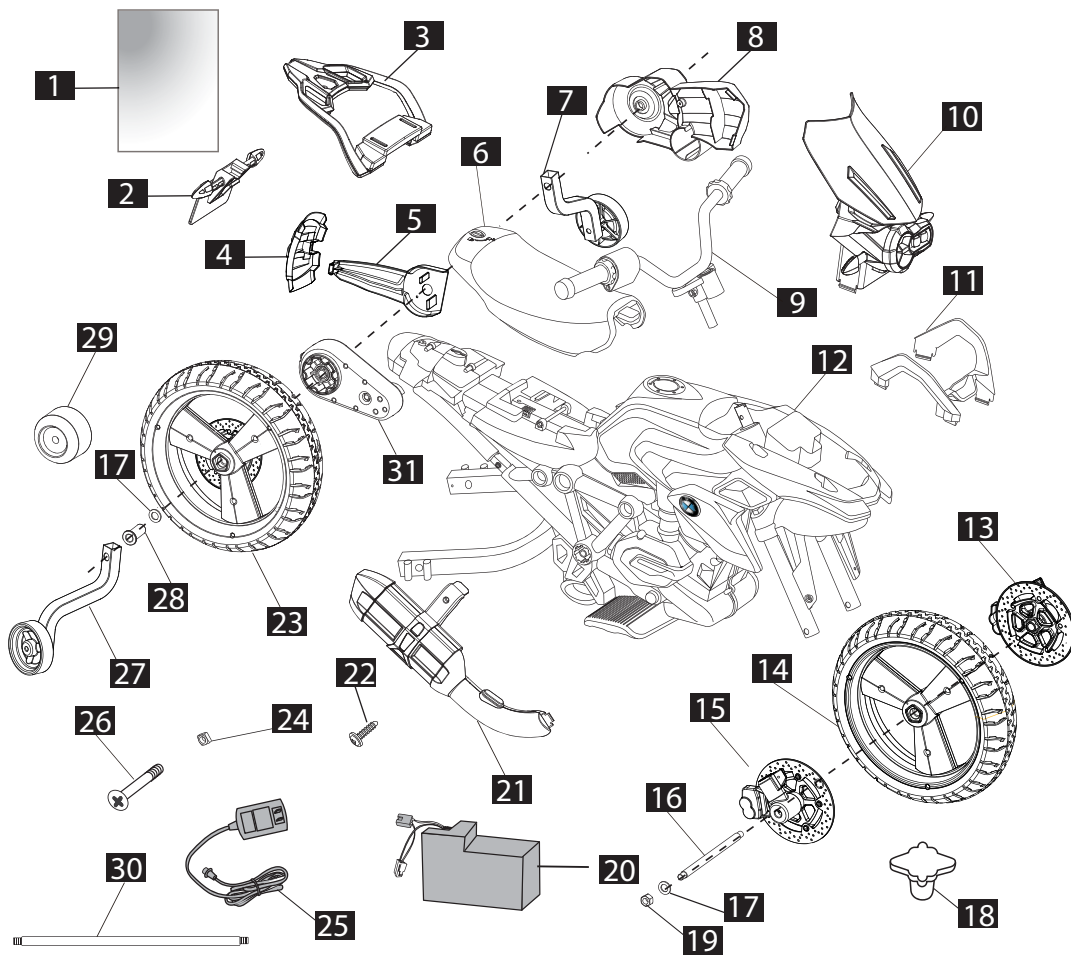
IMPORTANT: Before using the vehicle for the first time, the battery must be charged for a full 24 hours (no more than 30 hours).



WARNING: ADULT SUPERVISION REQUIRED

- Before using the vehicle, the rider must understand the vehicle controls and safety issues.
- It is the responsibility of the adult to educate the child and to determine if the child is capable of understanding the vehicle controls.
- An adult must ALWAYS directly supervise the use of this vehicle.
- NEVER leave a child unsupervised in the vehicle.

6 Parts



- | | | |
|-------------------------|----------------------------|-------------------------|
| 1. Manual | 14. Front Wheel | 27. Right Support Wheel |
| 2. License Plate | 15. Right Brake | 28. Inner Wheel Spacer |
| 3. Baggage Rack | 16. Front Axle | 29. Rear Axle Cover |
| 4. Rear Mud Guard | 17. Washers (5) | 30. Rear Axle |
| 5. Rear Wing Bracket | 18. Wrench | 31. Gear Box |
| 6. Seat | 19. Hexagon Nut (4) | |
| 7. Left Support Wheel | 20. Battery | |
| 8. Rear Shield | 21. Exhaust Pipe | |
| 9. Handlebar | 22. Self Tapping Screw (6) | |
| 10. Windshield Assembly | 23. Rear Wheel | |
| 11. Front Bracket | 24. Square Nut | |
| 12. Motorcycle Body | 25. Charger | |
| 13. Left Brake | 26. Steering Wheel Screw | |

Not Included:

- Phillips screwdriver

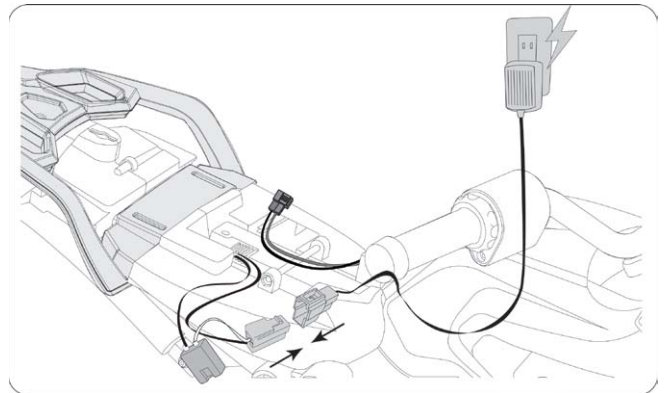
Charging Instructions

YOU MUST CHARGE THE BATTERY FOR 24 HOURS BEFORE THE FIRST USE!

ONLY AN ADULT SHOULD HANDLE THE BATTERY AND CHARGER.

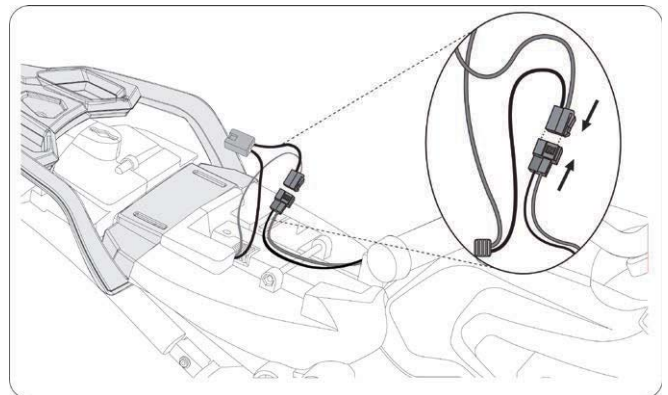
To Charge the Battery:

1. Ensure the vehicle is stopped and turned off.
2. Unlock and remove the seat.
3. Unplug the red battery connector from the red engine connector.
4. Connect the red battery connector to the red battery charger connector.
5. Plug into a 240 V outlet.



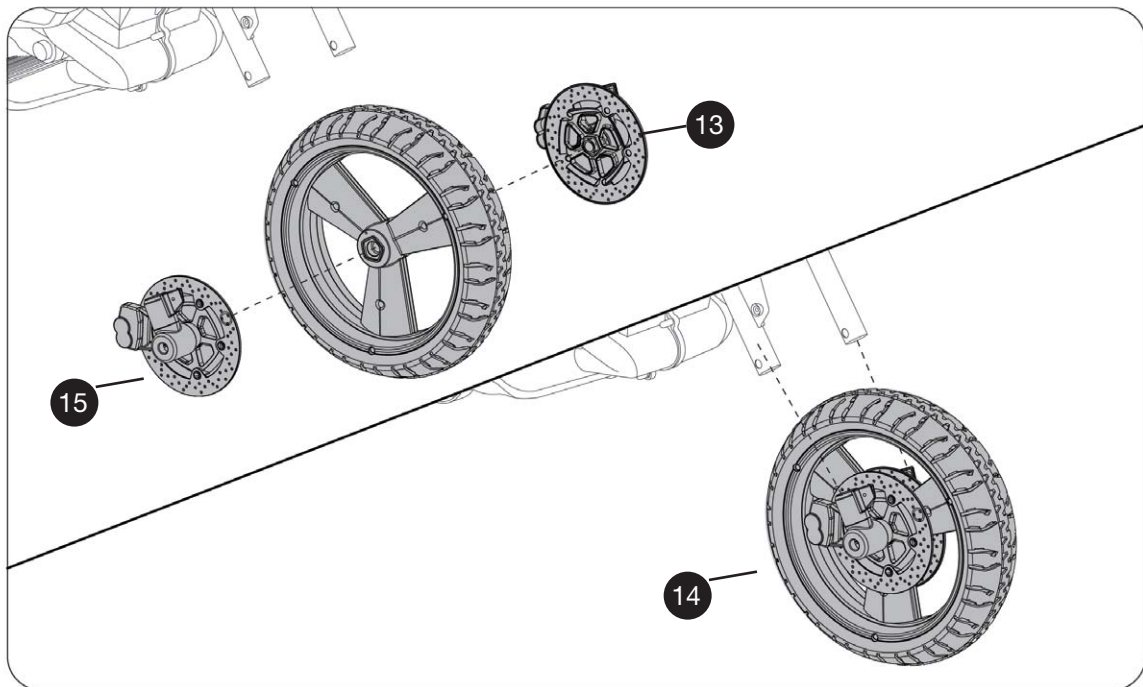
To Unplug the Battery:

6. Unplug the battery charger from the outlet.
7. Unplug the red battery connector.
8. Reconnect the red battery connector to the red engine connector.
9. Replace the seat and tighten lock.

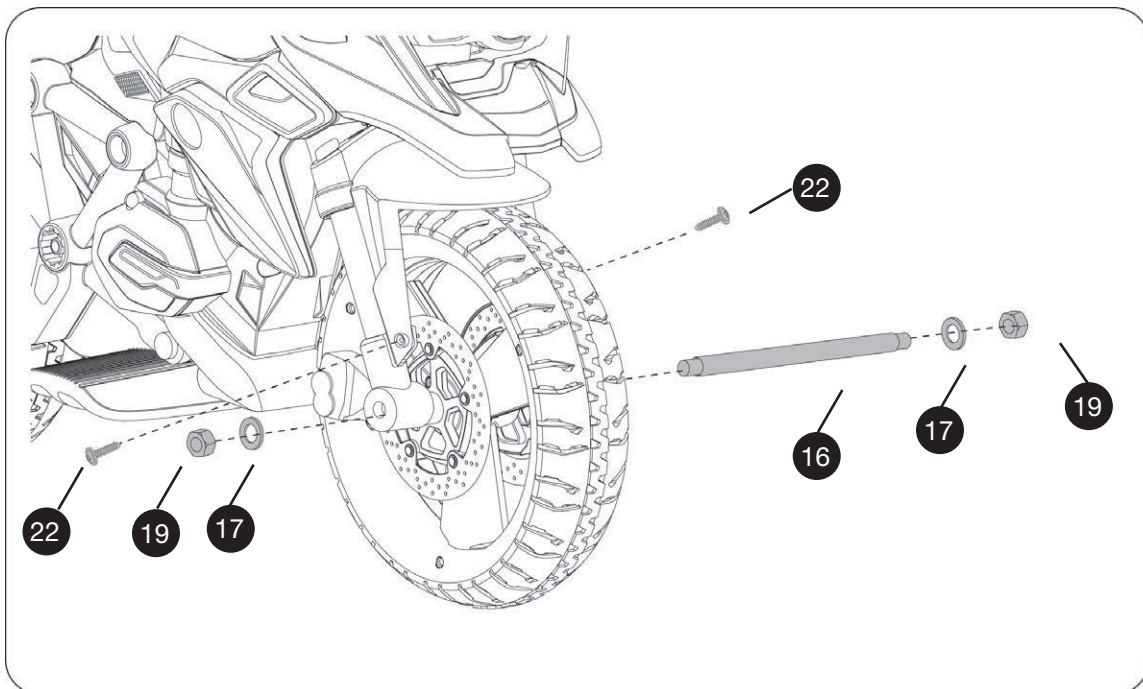


Note: It is not necessary to remove the battery for charging. However, if the battery does not reach the outlet, it can be removed for charging by disconnecting the red engine connector from the red battery connector, loosening the screw on the left side of the battery bar, removing the battery bar, and then removing the battery.

8 Assemble the Front Wheel

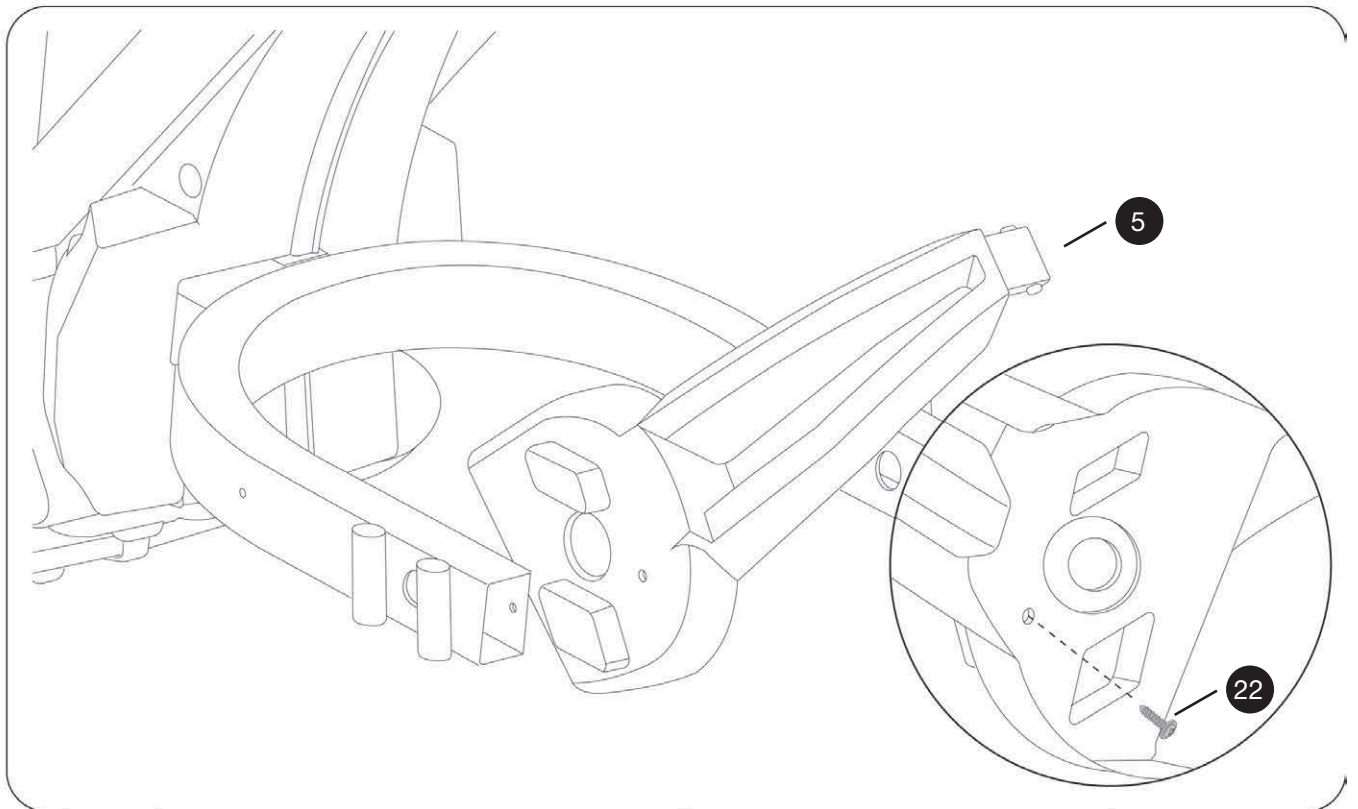


1. Place the left (13) and right brake (15) onto either sides of the front wheel (14).
2. Slide the front wheel assembly into the front fork.
3. Align the holes on the brakes with the holes on the front fork. Insert a self tapping



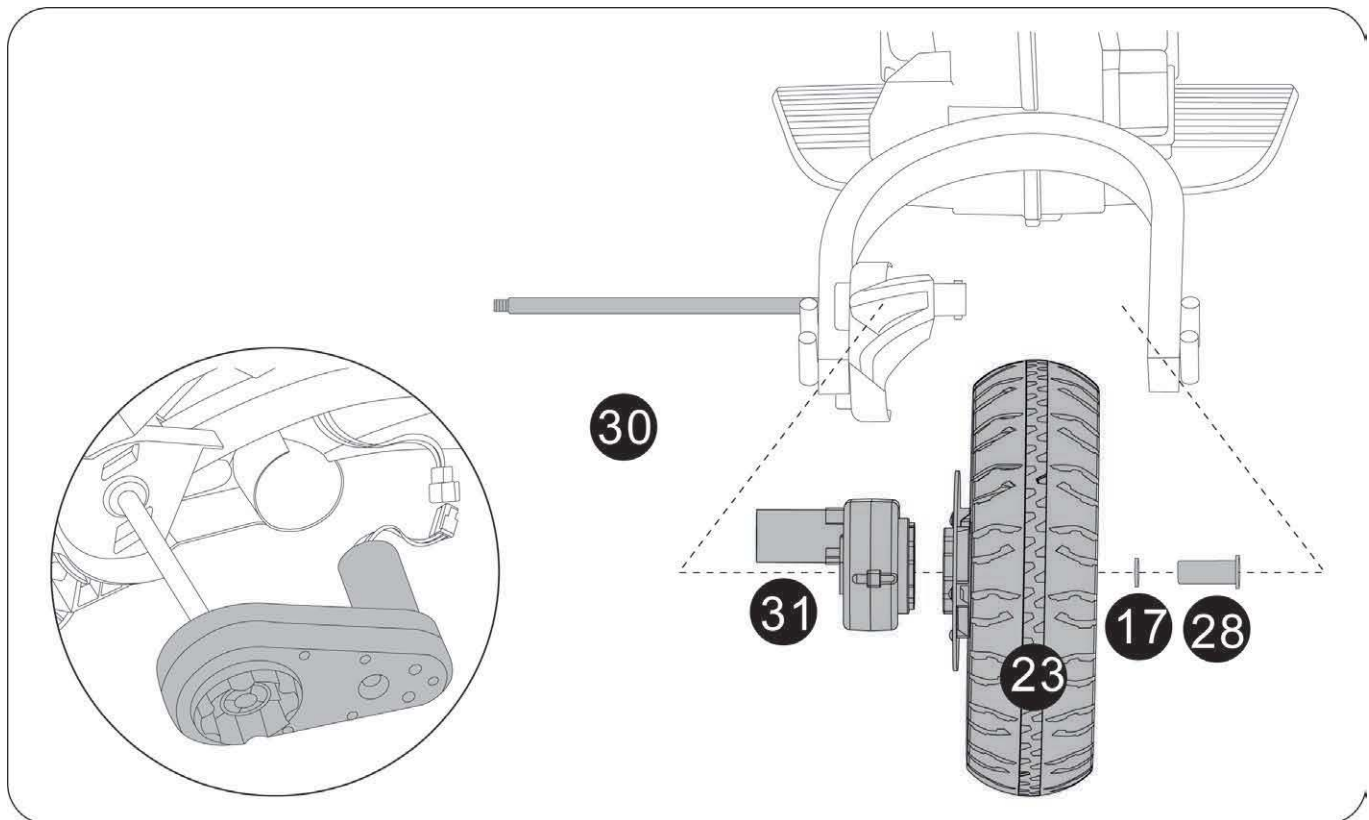
- screw (22) into both holes on the fork to secure the wheel.
4. Insert the front axle (16) through the front fork and front wheel assembly.
 5. Slide one washer (17) on both sides of the front axle.
 6. Secure the washers with a hexagon nut (19) on both sides of the axle. Use a wrench (18) to tighten.

Assemble the Rear Fork



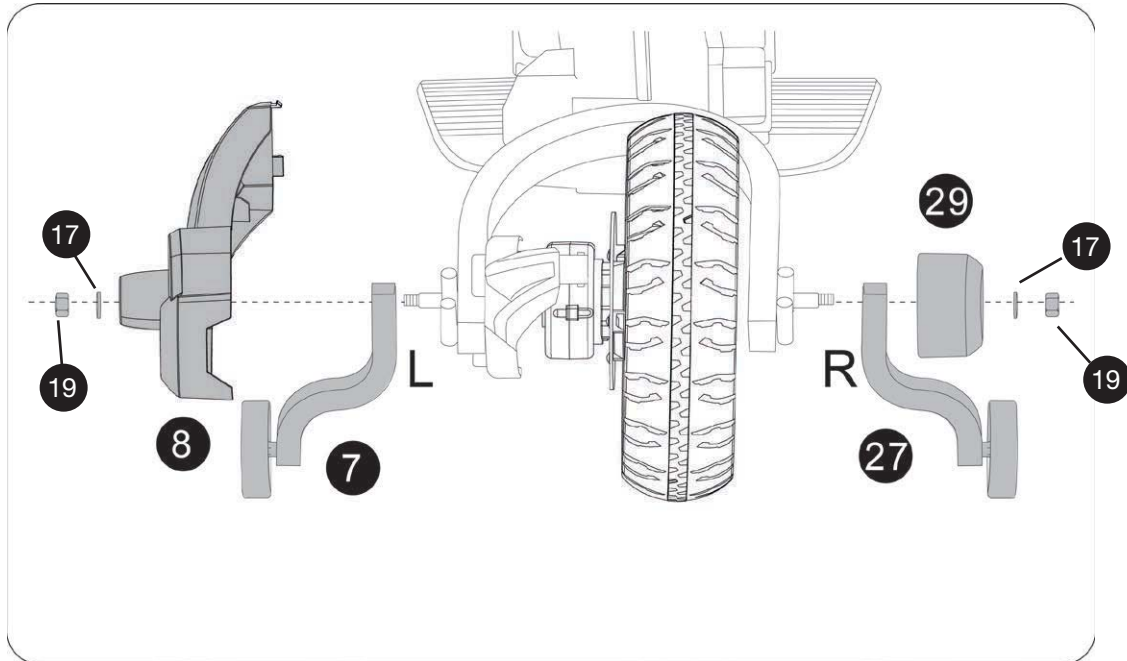
1. Align the slot on the rear wing bracket (5) with the inner side of the rear fork
2. Insert a self tapping screw (22) through the wing bracket and rear fork to secure

10 Assemble the Rear Wheel

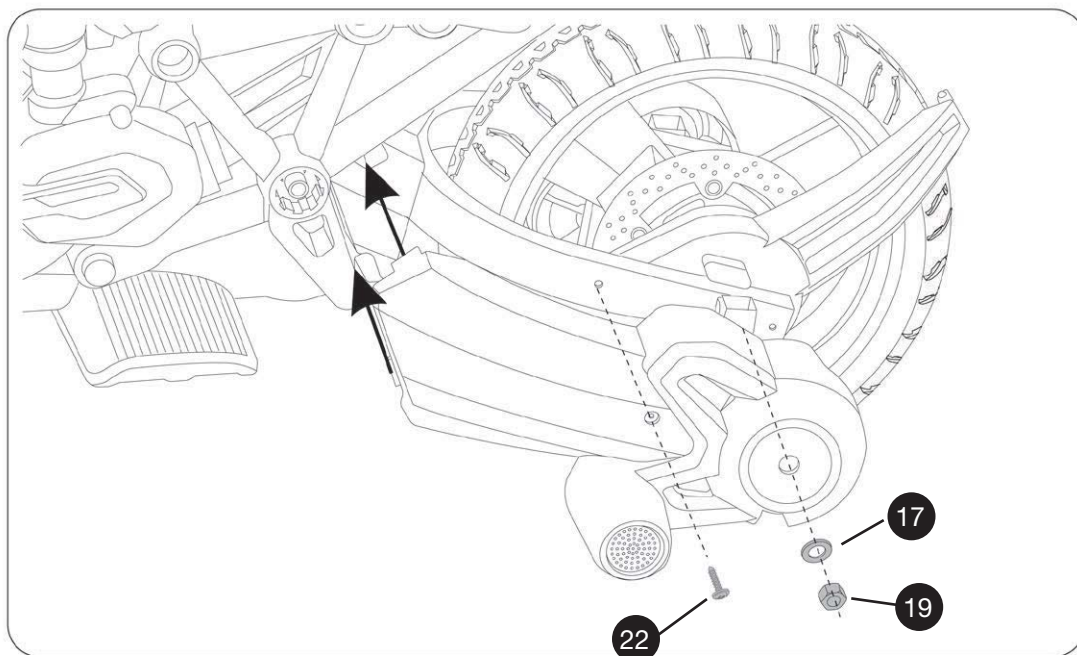


1. Insert the rear axle (30) into the left hole of the rear fork. Do not slide all the way through.
2. Slide the gear box (31) onto the rear axle. Connect the white connector on the gear box with the white engine connector.
3. Slide the protruding side of the rear wheel (23) onto the axle. Ensure it is fully engaged with the gear box.
4. Slide the washer (17) and inner wheel spacer (28) onto the axle, and then slide the axle through the rest of the rear fork.

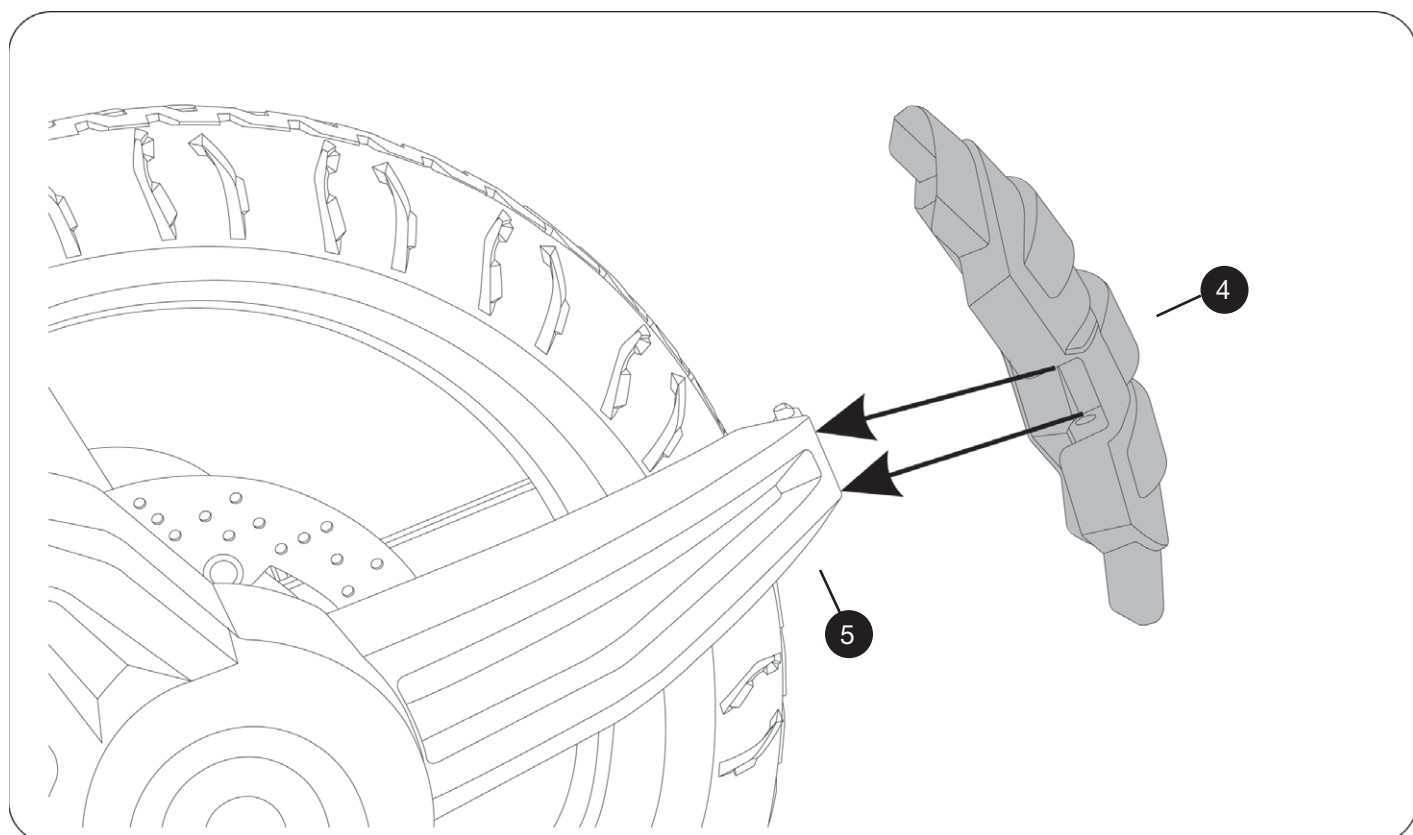
Assemble the Support Wheels¹



1. Slide the left support wheel (7) onto the left side of the rear axle.
2. Slide the right support wheel (27) onto the right side of the rear axle.
3. Slide the rear shield (8) onto the left side of the rear axle. Align the slots on the rear shield with the protrusions on the left fork and snap into place. Ensure the silver cylinder on the gearbox fits into the bottom hole of the rear shield.
4. Insert a screw (22) into the screwhole on the rear shield and tighten with a screwdriver.
5. Slide a washer (17) and hexagon nut (19) on both sides of the rear axle. Tighten both sides with a wrench (18).

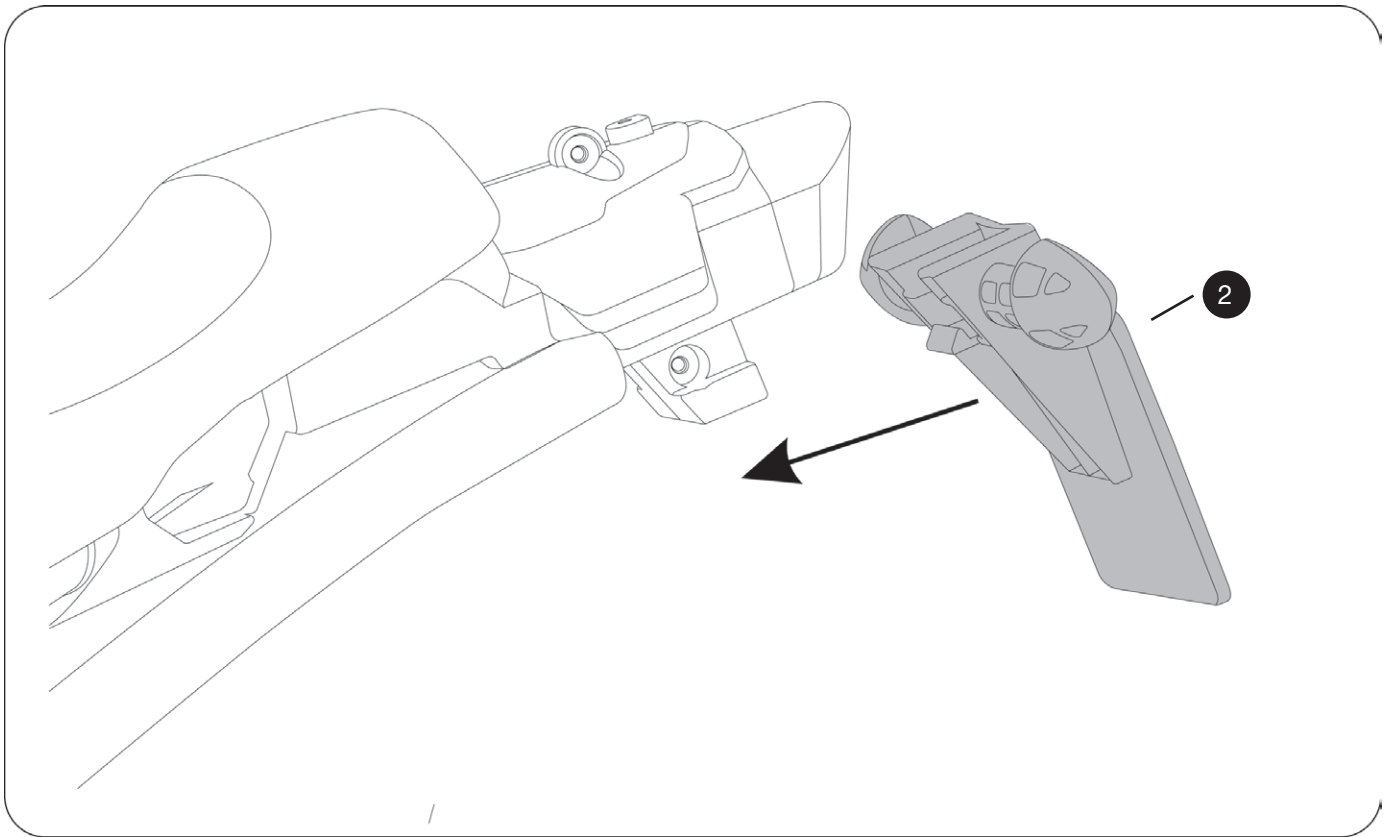


12 Attach the Mud Guard



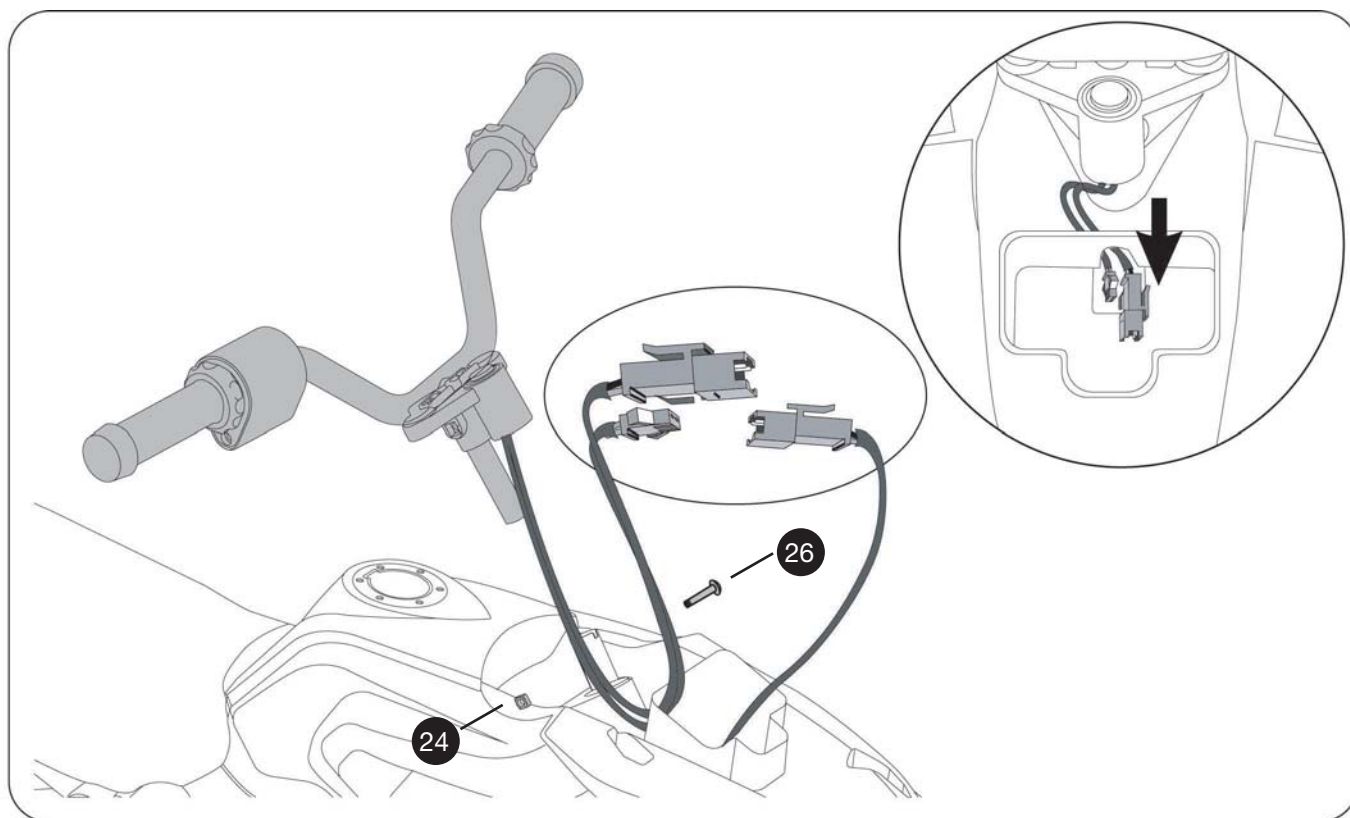
1. Align the slot on the back of the mud guard (4) with the back of the rear wing bracket (5).
2. Snap the mud guard onto the rear wing bracket.

Attach the License Plate



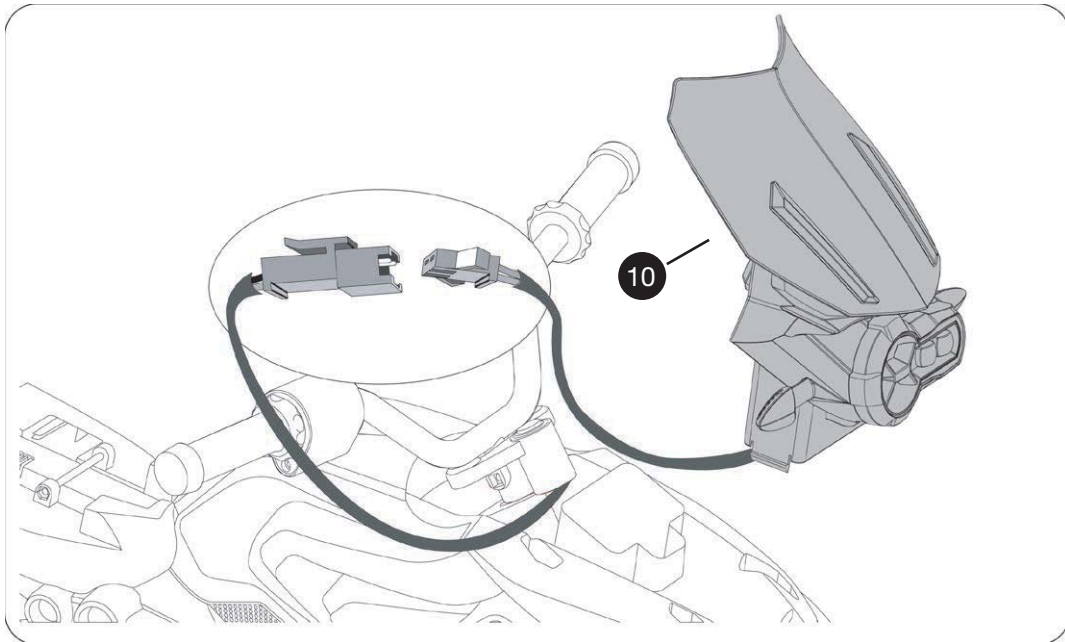
1. Align the top of the license plate (2) with the slot on the bottom of the back of the motorcycle body.
2. Slide the license plate onto the slot until it snaps into place.

14 Assemble the Handle Bars

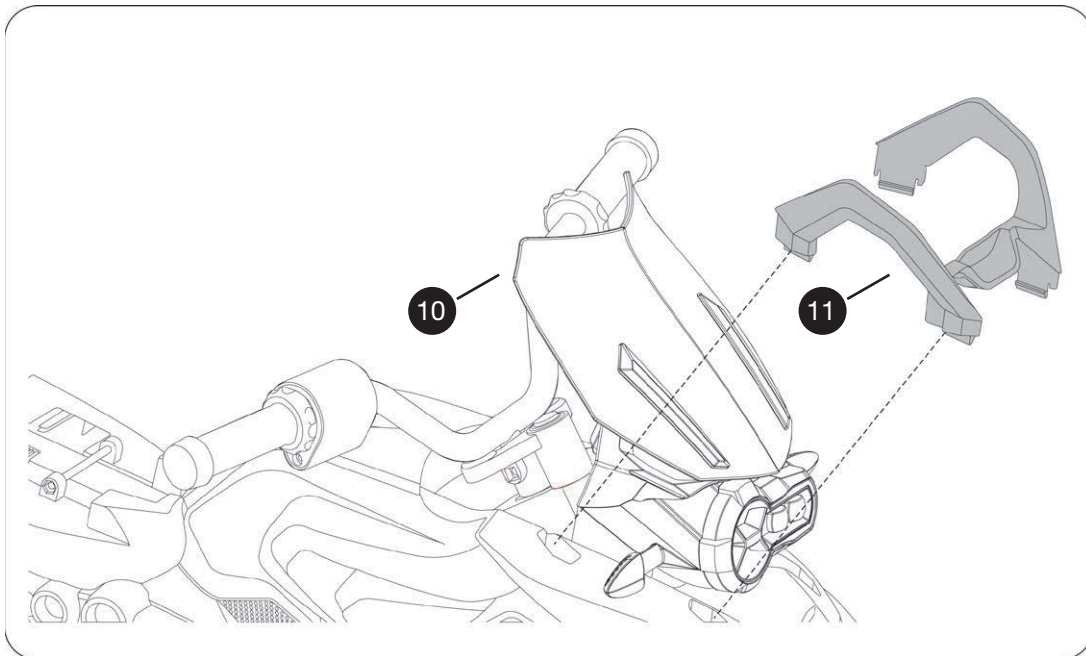


1. Remove the screw (26) and nut (24) from the steering axle.
2. Slide the handle bars (9) onto the steering axle. Ensure the holes on the handle bars align with the holes on the steering axle.
3. Insert the screw and nut into the handle bar assembly and tighten with a screwdriver.
4. Carefully slide the handle bar wire connector into the wire compartment where the motorcycle wire connector is located.

Assemble the Windshield

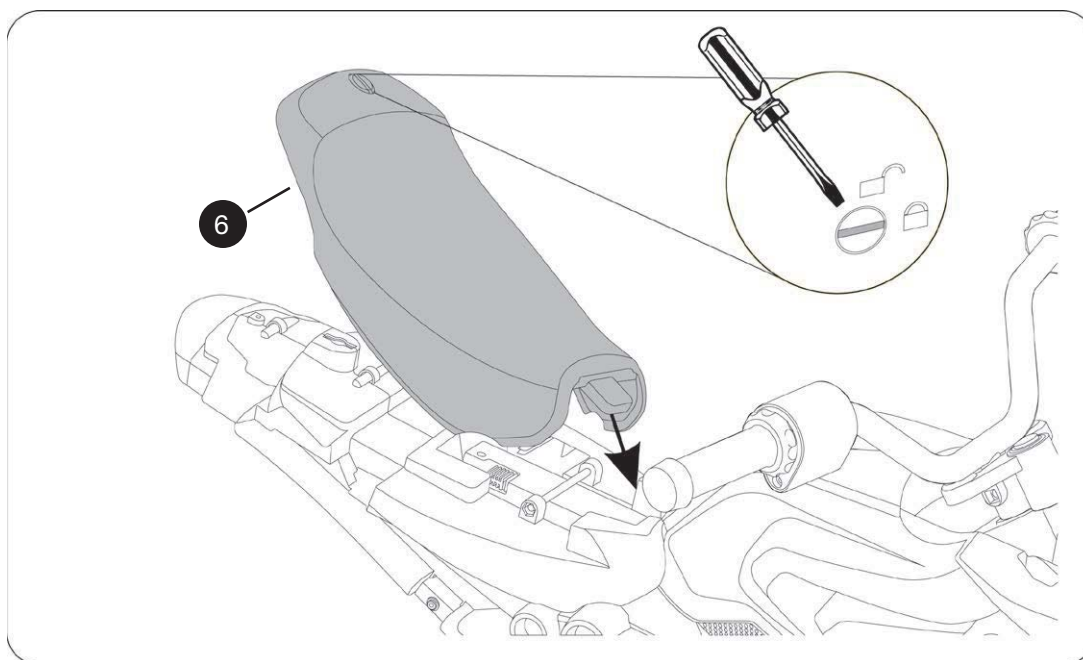


1. Connect the handle bar wire connector to the motorcycle body wire connector.
2. Align the windshield assembly (10) with the slots on the wire compartment and snap into place taking care not to damage the wires in the process.

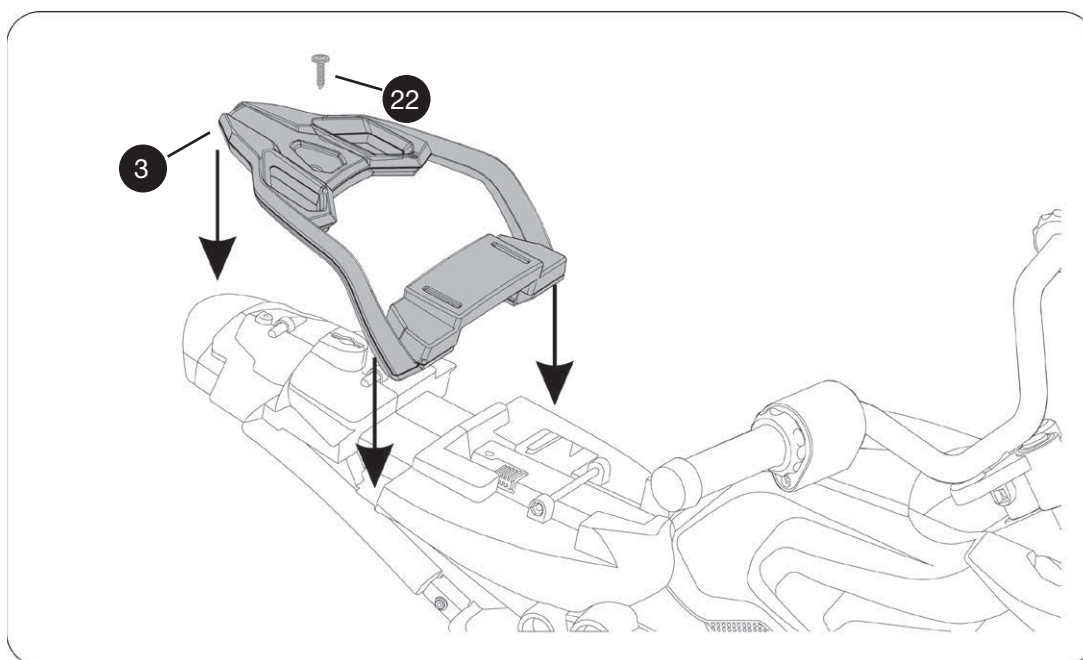


1. Align the front bracket (11) with the four slots on the sides of the windshield (10).
2. Snap the bracket into place.

16 Assemble the Baggage Rack

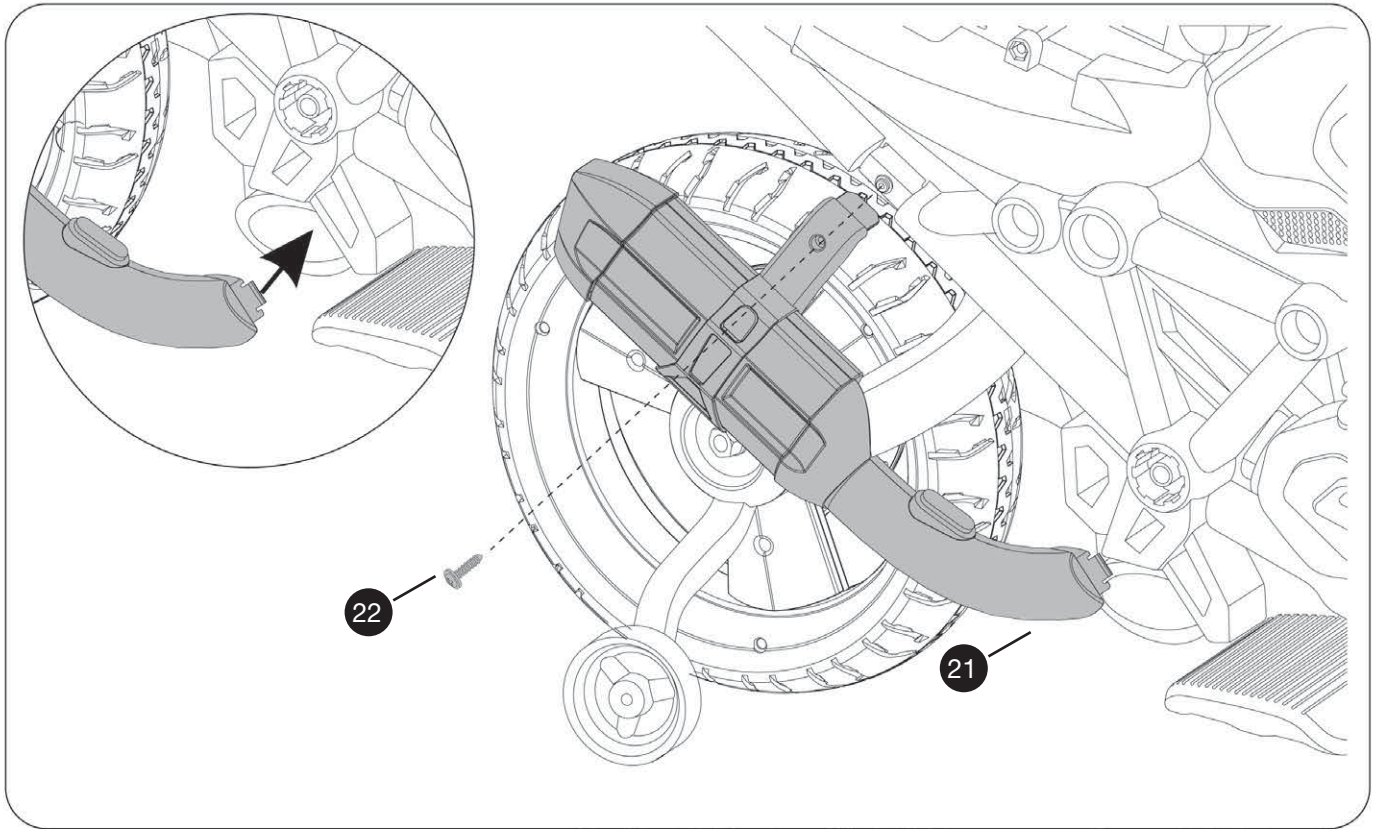


1. Using a flathead screw driver, turn the seat lock to the unlock position.
2. Remove the seat (6) by lifting on the back of the seat.



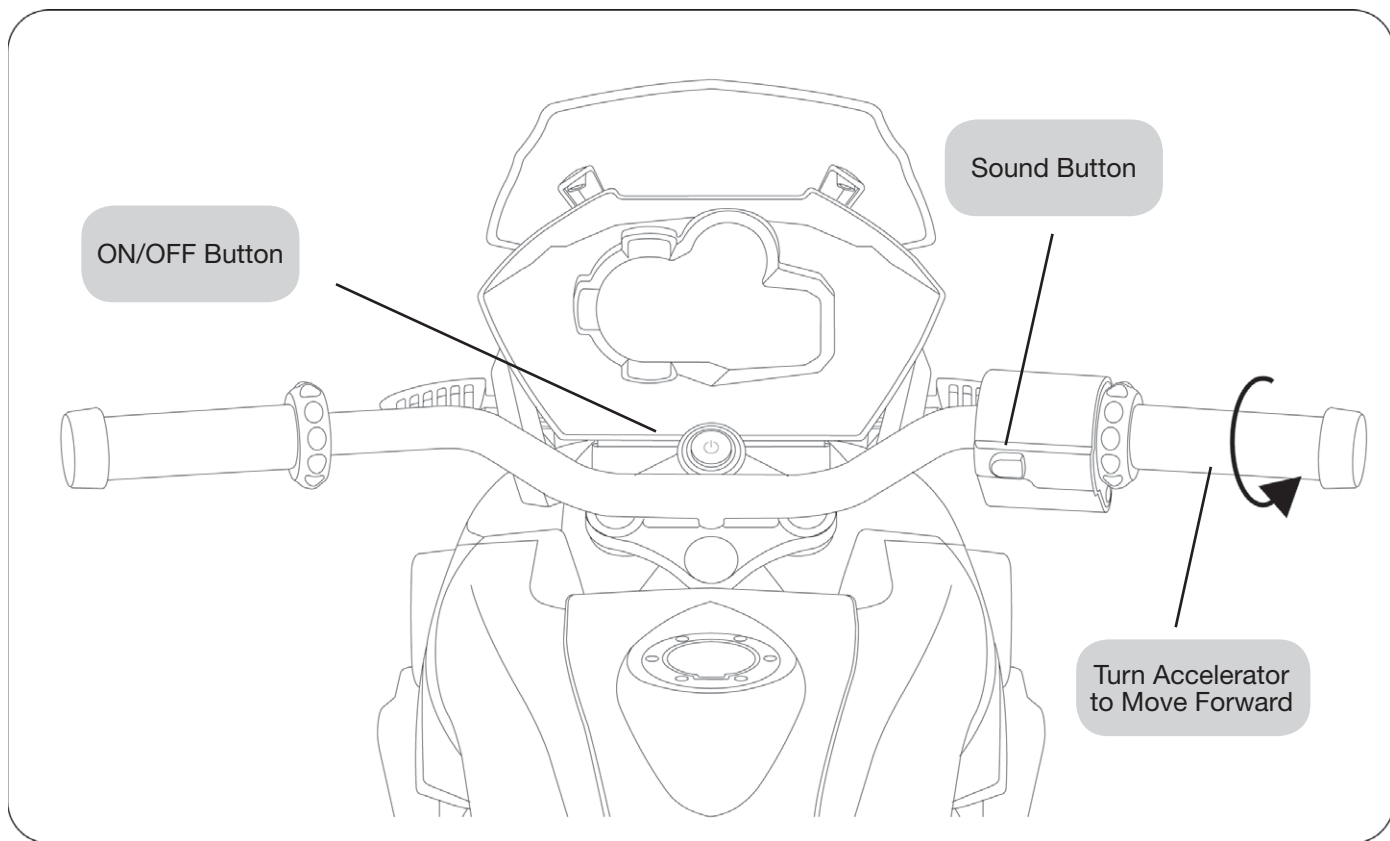
1. Align the front bar of the baggage rack (3) with the gap on the rear of the battery compartment and snap into place.
2. Insert a self-tapping screw (22) into the hole on the back of the baggage rack to secure.
3. Ensure the red connector on the battery is connected to the red engine connector before replacing and locking the seat.

Attach the Exhaust Pipe 7



1. Align the top and front of the exhaust pipe (21) with the slots on the right side of the motorcycle body and snap into place.
2. Use a self-tapping screw (22) to secure.

18 User Information



1. **Battery:** Charge the battery a full 24 hours before first use. Charge the battery for 8-12 hours each additional recharge.
2. **ON:** Press the power button on the front of the motorcycle dashboard to turn ON the motorcycle. The motorcycle will make a revving noise when it is turned ON
3. **OFF:** Press the power button again to turn OFF the motorcycle
4. **Sounds:** Press the red button on the right handlebar to hear a horn sound
5. **Forward:** Twist the right handlebar to move forward
6. **Lights:** The headlight will turn on when the motorcycle is in motion

Important Battery and Charger Information

- Only an adult who has read and understands the safety warnings may handle and operate the battery and battery charger. Keep away from children.
- Charge the battery for 24 hours before using the vehicle for the first time.
- Recharge the battery immediately after each use. Charge for at least 8-12 hours, but no more than 20 hours.
- Charge the battery at least once a month, even if the vehicle is not used or stored.
- Never leave the battery in a discharged condition.
- Connect the terminal of the battery and charger, then plug the charger into a 240V AC outlet.
- It is normal for the charger to heat slightly. If the charger rises above 71°C / 160°F, disconnect the charger and call Customer Service for assistance.
- Keep the charger away from water or excessive moisture to prevent short-circuiting.
- Only use the charger specified with the original item. **Do not charge the battery with any other charger.**
- Do not attempt to recharge non-rechargeable batteries with the original charger.
- **Do not replace the battery with any other battery, or the warranty will be voided.** If you need a replacement battery, see Page 21 for replacement information.
- Remove damaged batteries from the car immediately. Recycle or dispose of the used batteries responsibly.
- Do not short circuit the supply terminals.
- Do not leave the battery connected in the vehicle for extended periods of time when the vehicle is not being used. Disconnect the battery connector from the engine connector before storing.
- The vehicle is equipped with a thermal fuse to protect the electric circuit. If the vehicle cuts out, turn the vehicle off and on to reset.

20 **General Care**

- Regularly inspect all vehicle parts to ensure they are in good working condition.
- Regularly inspect the charger, cord, plug, and other related parts for damage.
- Remove any damaged parts and immediately contact Customer Service for replacement parts. See Service and Repairs on Page 21 for more information.
- DO NOT operate the vehicle if there are any damaged parts.
- Carefully clean the vehicle with a damp cloth and mild soap. Do not get water in or near any electrical parts. Do not wash the vehicle with a hose.
- Store the vehicle indoors or use a tarp to cover it. Keep away from stoves, heaters, or other sources of heat.

Troubleshooting Guide 1

Completely read through the manual and troubleshooting guide before contacting Customer Service.

Problem	Potential Cause	Solution
Vehicle does not run	Battery is low	Recharge the battery
	Snap pins are loose	Tighten snap pins
	Loose wires or loose connectors	Ensure the battery connectors are securely attached. If wires are loose, contact Customer Service for repairs
	Battery is dead	Call Customer Service for replacement battery
	Electrical system is damaged	Call Customer Service for repairs
	Motor is damaged	Call Customer Service for repairs
Vehicle only runs for a short time	Undercharged battery	Ensure a secure connection when the battery is recharging. Recharge for at least 8-12 hours
	Overcharged battery	Never charge the battery for more than 30 hours
	Battery is old	Replace battery
Vehicle runs slowly	Battery is not fully charged	Ensure a secure connection when the battery is recharging
	Battery is old	Call Customer Service to order replacement battery
	Too much weight on vehicle	Reduce weight on vehicle (35 kg/77 lbs max)
	Harsh conditions	Operate the vehicle on level ground and safe surfaces

Problem	Potential Cause	Solution
Vehicle needs a push to start	Loose wires or loose connectors	Ensure the battery connectors are securely attached. If wires are loose, contact Customer Service
	“Dead spot” on motor	A “dead spot” means electricity is not being delivered to the terminal. Contact Customer Service
Difficulty shifting	Attempting to shift while vehicle is moving	Stop the vehicle before shifting
Motor or gear box making grinding noises	Motor or gear damage	Contact Consumer Service for repairs
Battery will not recharge	Charger is not plugged in	Plug in the charger to a functional wall outlet
	Charger is not working	Call Customer Service for a replacement
	Loose connector or loose adapter	Check that the connectors are securely plugged in to each other
Battery makes bubbling noise while recharging	This is normal	No action required
Charger is warm	This is normal	No action required

Intentionally blank

24 Service and Repairs

If your product requires service, repairs or replacement parts, please contact Customer Service.

Business name: Hunter Products Pty Ltd
Business address: Level 2, 424 Warrigal Road, Moorabbin VIC 3189, Australia
Telephone number: Australia wide (local call cost) 1800224094
(Monday to Friday 9.00 to 5.00pm AEST)
Web: www.electricrideon.com.au
Email address: enquiries@hunterproducts.com.au

One-Year Limited Warranty

Hunter Products warrants that your 6v BMW Motorcycle will be free from defects in materials and workmanship for the vehicle (except for the 6-volt battery) for a period of 12 months, from the date of purchase. This warranty only applies where the product is completely and correctly assembled and used in accordance with all accompanying recommendations and users instructions. This warranty is in addition to your rights under the Australia Consumer Law.

Hunter Products, at its option will provide you with a refund or replacement parts for this product if the 6v BMW Motorcycle becomes defective within the warranty period. Hunter Products will bear the reasonable expense of claiming the warranty. This warranty will no longer apply where the defect is a result of an accident, misuse, abuse, neglect or other causes not arising out of defects in materials or workmanship, nor does it cover damages arising out of damages arising out of service by other than an authorised service person.

Our goods come with guarantees that cannot be excluded under the Australian Consumer Law. You are entitled to a replacement or refund for a major failure and compensation for any other reasonably foreseeable loss or damage. You are also entitled to have the goods repaired or replaced if the goods fail to be of acceptable quality and the failure does not amount to a major failure.

Please retain your receipt as proof of purchase and contact Hunter Products for further assistance on how to process any warranty claims.

Business name: Hunter Products Pty Ltd
Business address: Level 2, 424 Warrigal Road, Moorabbin VIC 3189, Australia
Telephone number: Australia wide (local call cost) 1800224094
(Monday to Friday 9.00 to 5.00pm AEST)
Web: www.electricrideon.com.au
Email address: enquiries@hunterproducts.com.au