



Paragon Child Products Co., LTD. (Goodbaby Group)

6V Mini Cooper S Customer Service Guide



Customer Service Guide



Contents

I) Check Battery	3
II) Check Wiring Condition	5
III) Check Foot Pedal	8
IV) Gearbox Replacement	10
V) Headlights Replacement	14
VI) Schematic diagram	16
VII) Exploded View	17

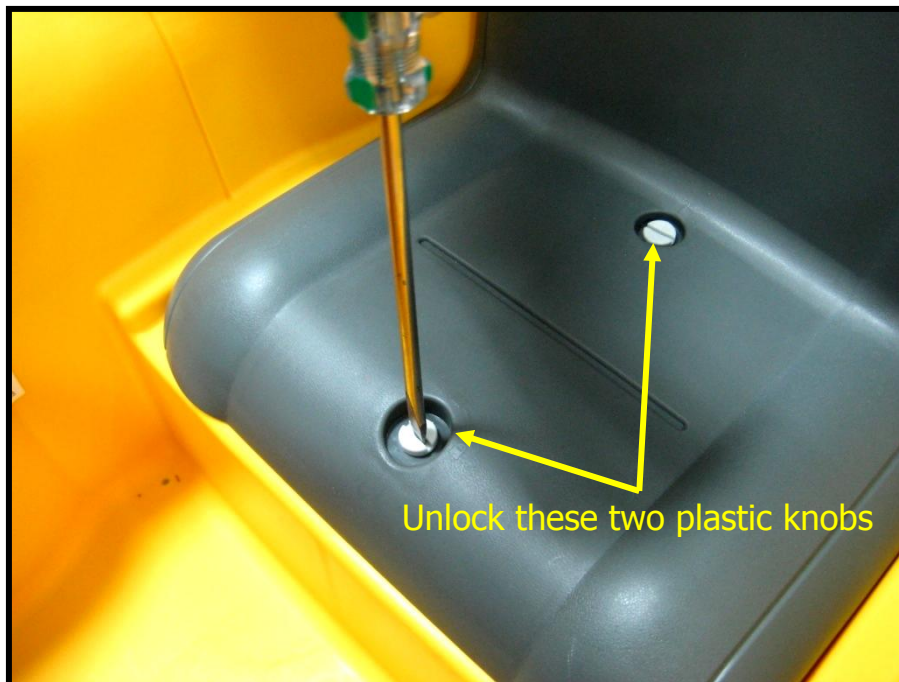
Customer Service Guide



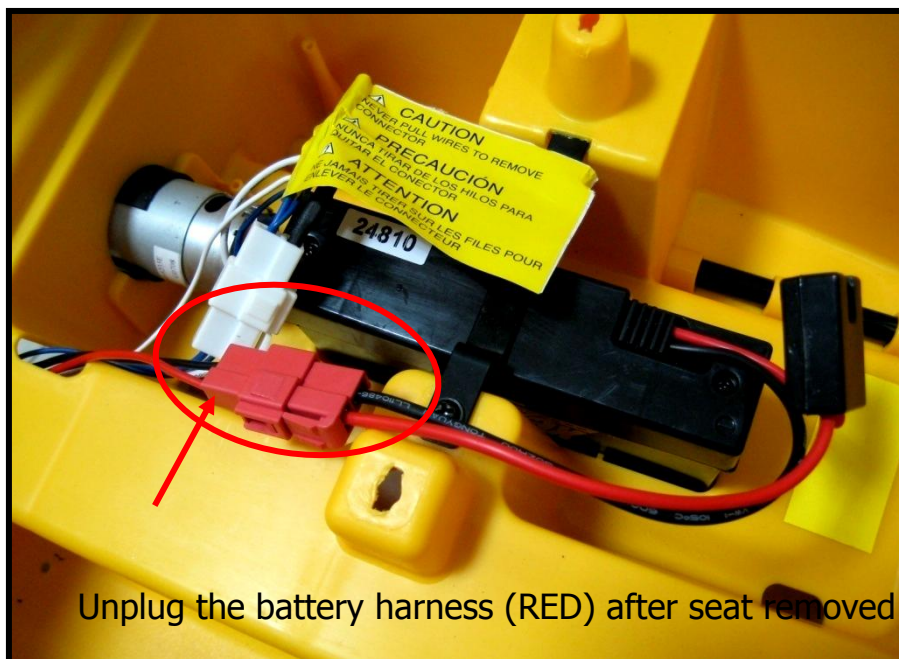
I) Check Battery

Operation: Use a Flat head screwdriver, unlock and remove the seat. Locate the battery harness, unplug the connector then use a volt-meter to check battery condition at battery side.

Step (1)



Step (2)

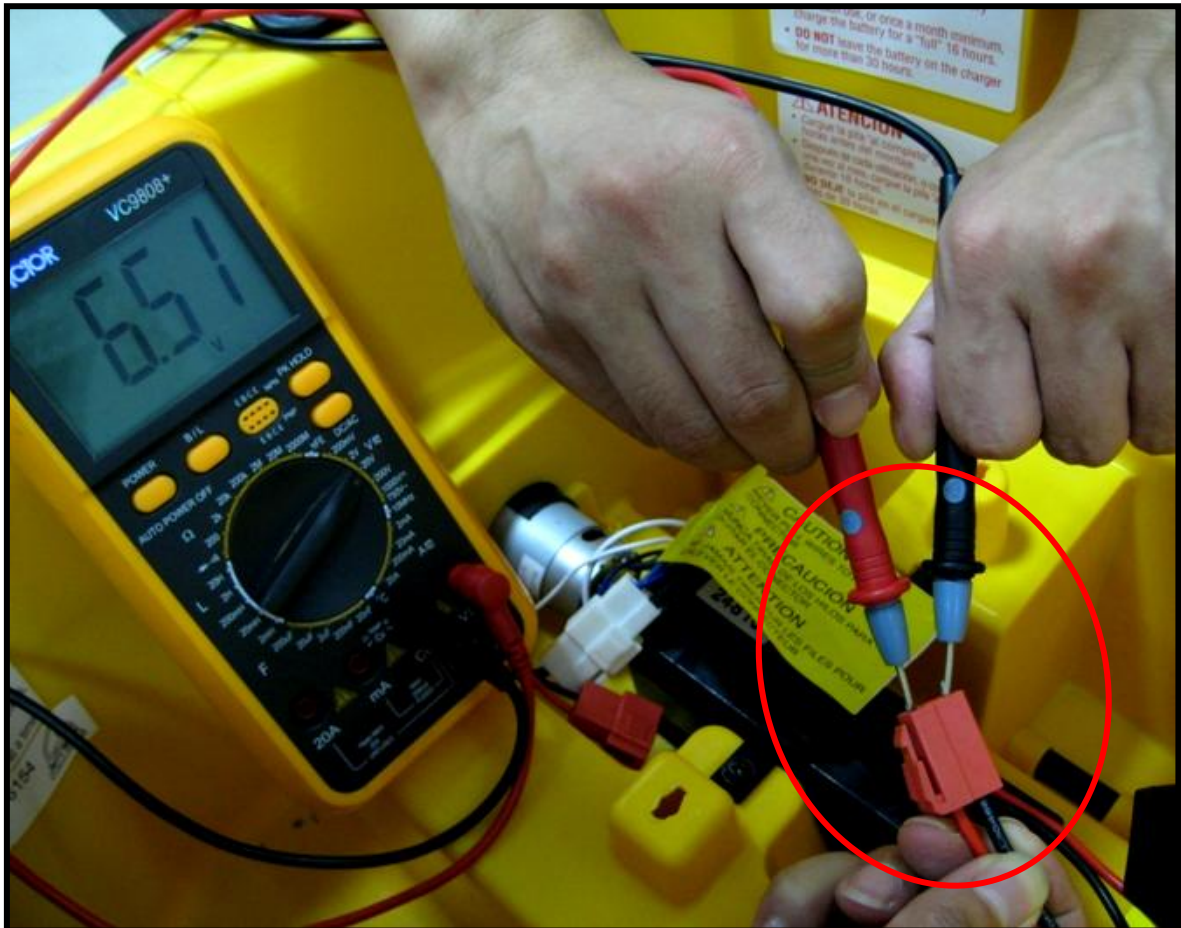


Customer Service Guide



I) Check Battery

Step
(3)



Reading Judgment: 6.0 V ~ 6.5 V – Good condition

5.6 V ~ 5.9 V – Proceed to Recharge

5.5 V – Battery to be recharged if after the stipulated recharging time, voltage has not increased, the Battery needs replacement

Below 5.5 V – Battery needs replacement

Customer Service Guide



II) Check Wiring Connection

Operation: There are totally two positions of connections should be checked.

- A. Motor/Gearbox : Follow above (Point I) to remove the seat, locate the Gearbox harness underneath.



Customer Service Guide



II) Check Wiring Connection

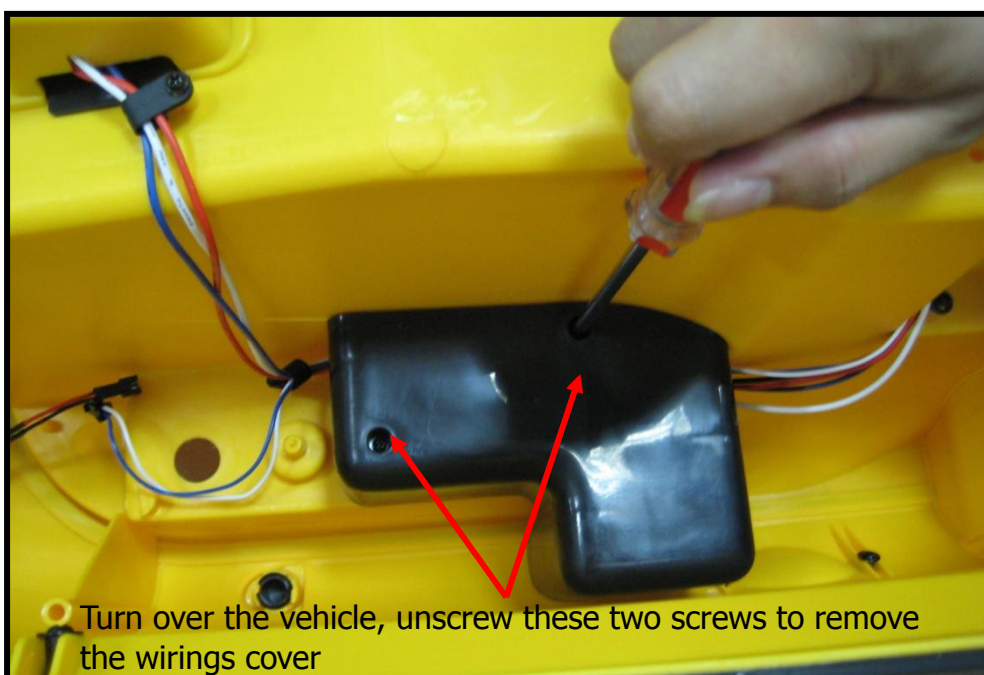
B. Functional Switches : Access all the functional switches which are located at the bottom side of Shifter per below procedures.

Step (1)



Main function switches are located at underside of Shifter

Step (2)



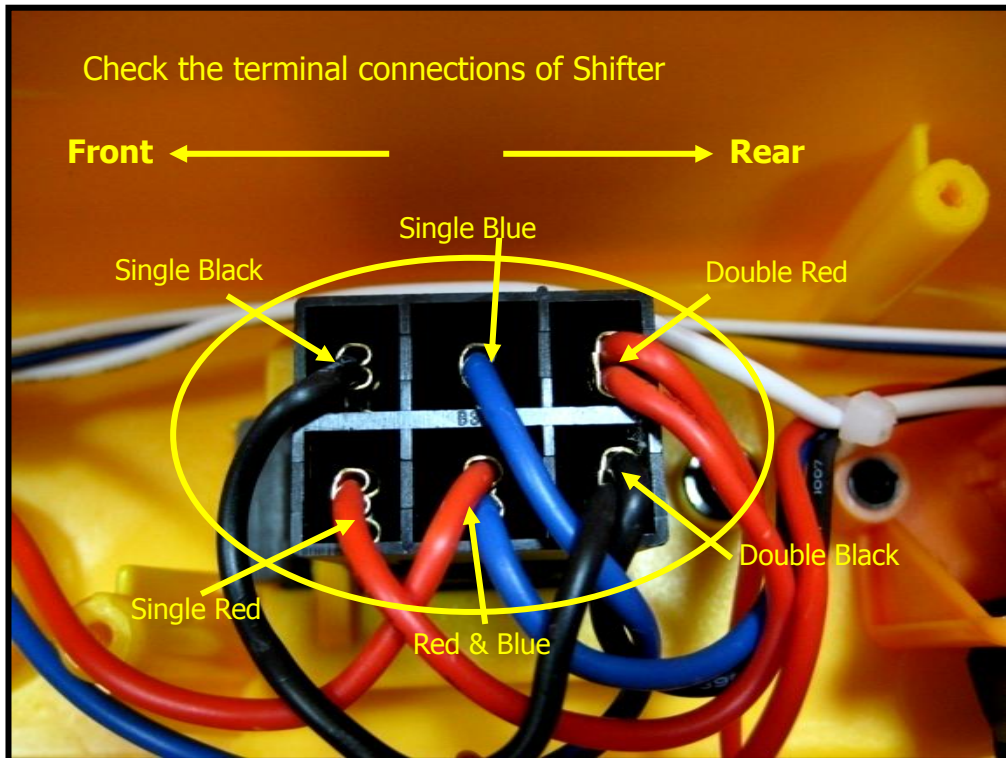
Turn over the vehicle, unscrew these two screws to remove the wirings cover

Customer Service Guide

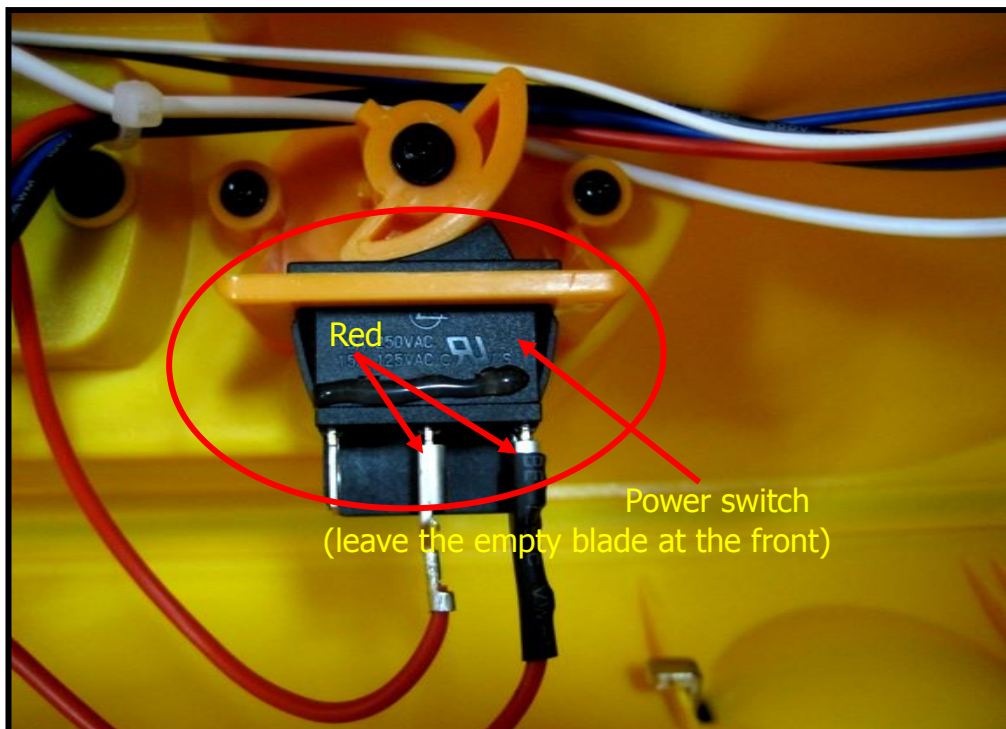


II) Check Wiring Connection

Step (3)



Step (4)



Reverse above procedures to re-assemble back the vehicle

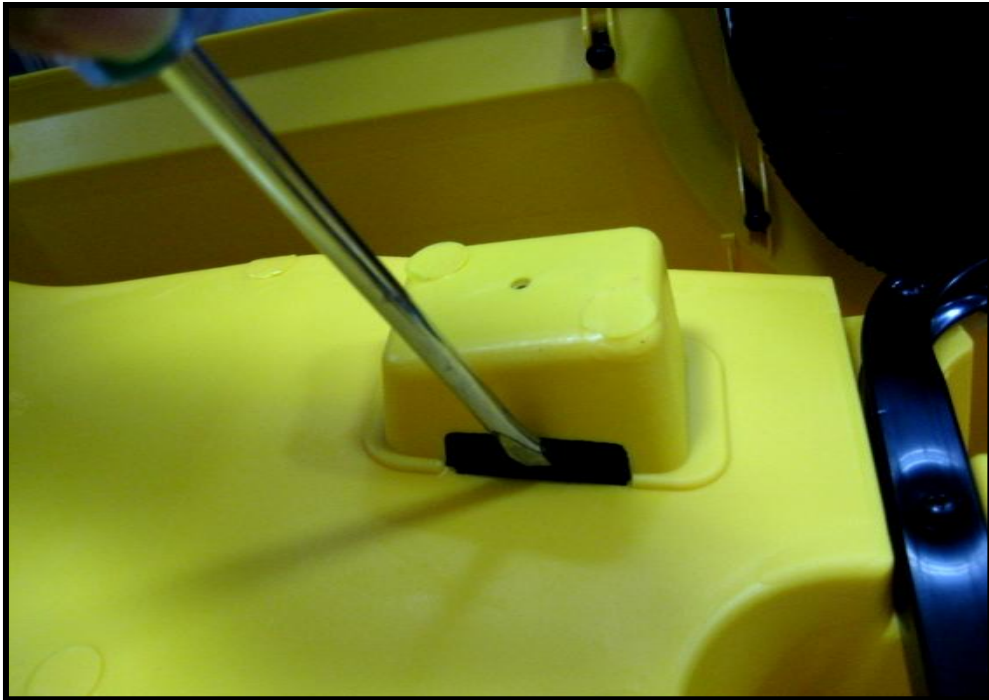
Customer Service Guide



III) Check Foot Pedal

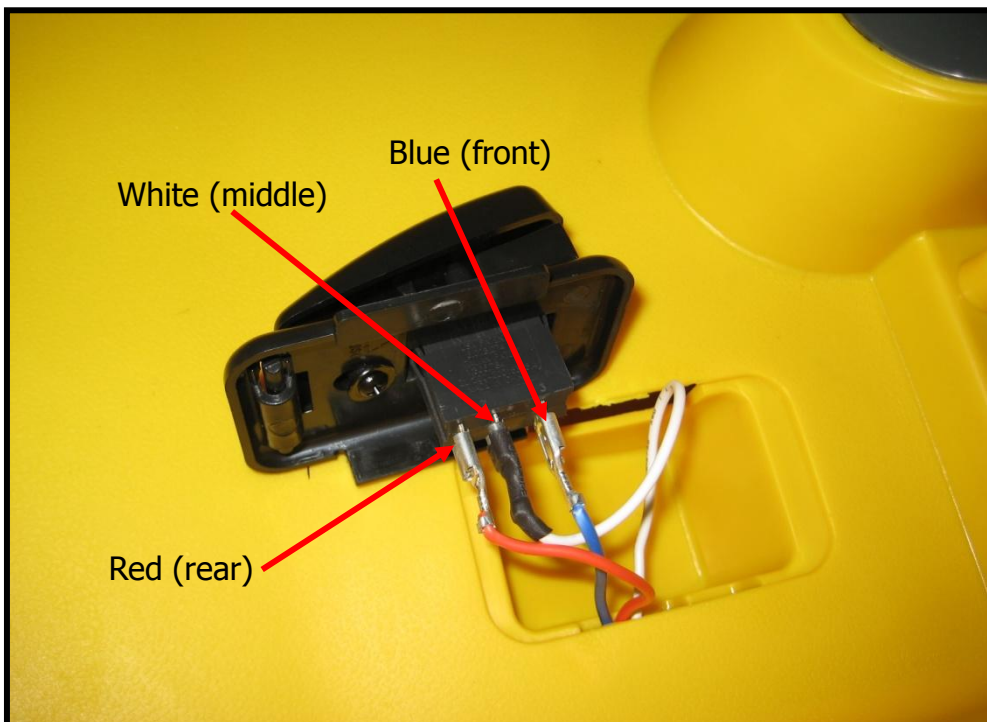
Operation: Follow below procedures to check the Foot Pedal connection.

Step (1)



Turn over the vehicle and pull out the Foot Pedal cover by screwdriver from right side

Step (2)

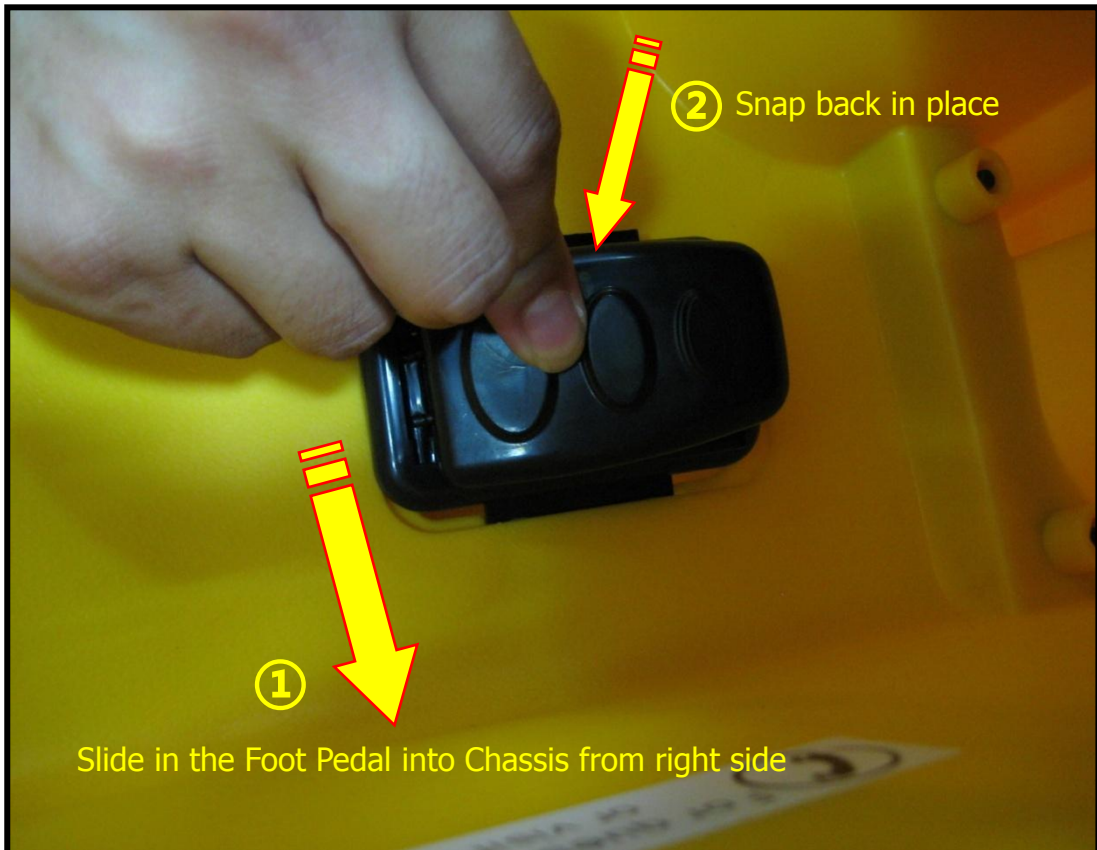


Customer Service Guide



III) Check Foot Pedal

Step
(3)



Customer Service Guide



IV) Gearbox Replacement

Operation: Follow below steps to take apart the gearbox completely for replacing.

Step (1)



Step (2)



Customer Service Guide



IV) Gearbox Replacement

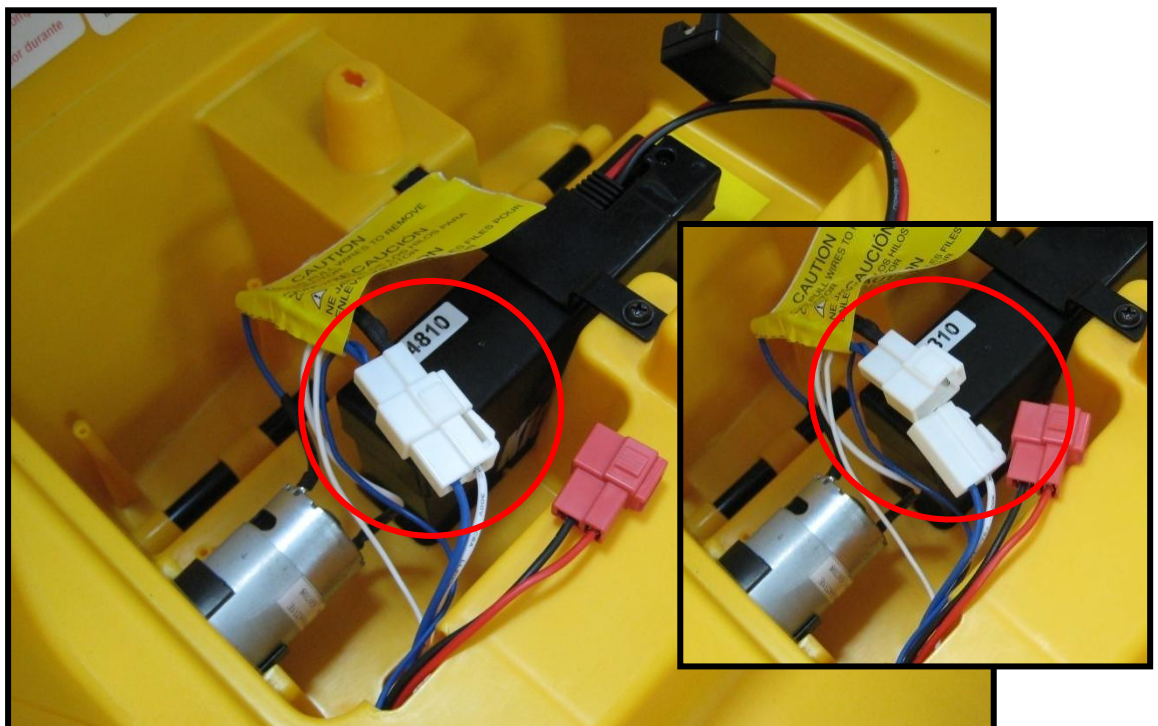
Step (3)



Slide the rim and rear wheel out from axle

Follow above (Point IIB) to access the Motor harness underneath the seat, then unplug it before removing the gearbox

Step (4)

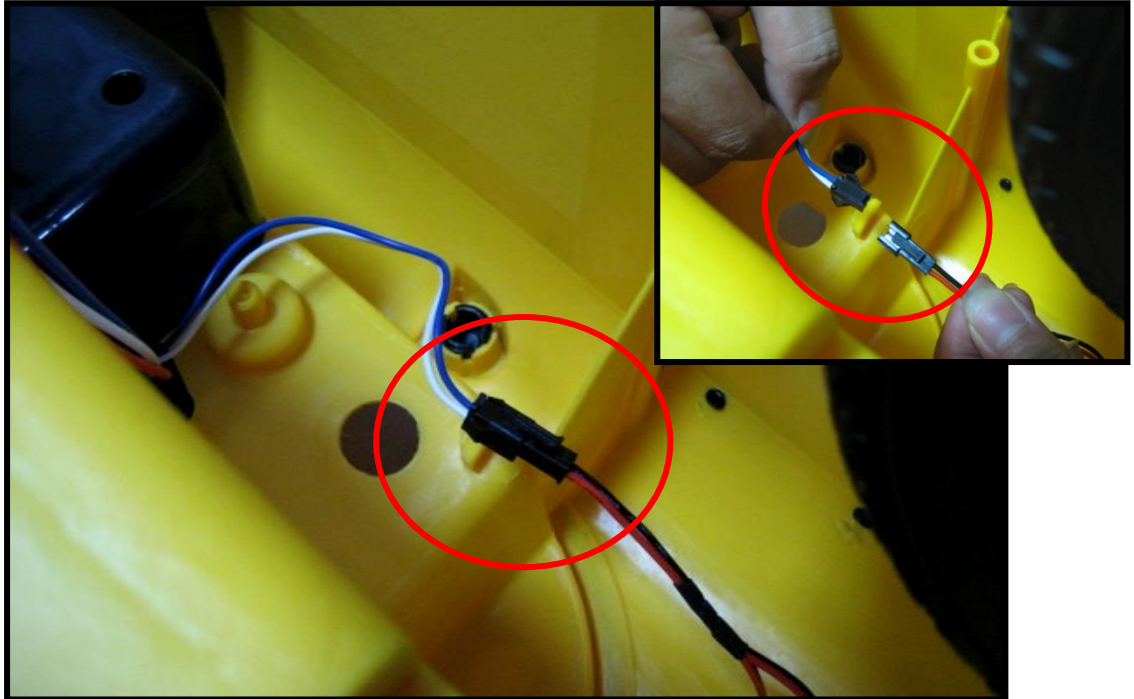


Customer Service Guide



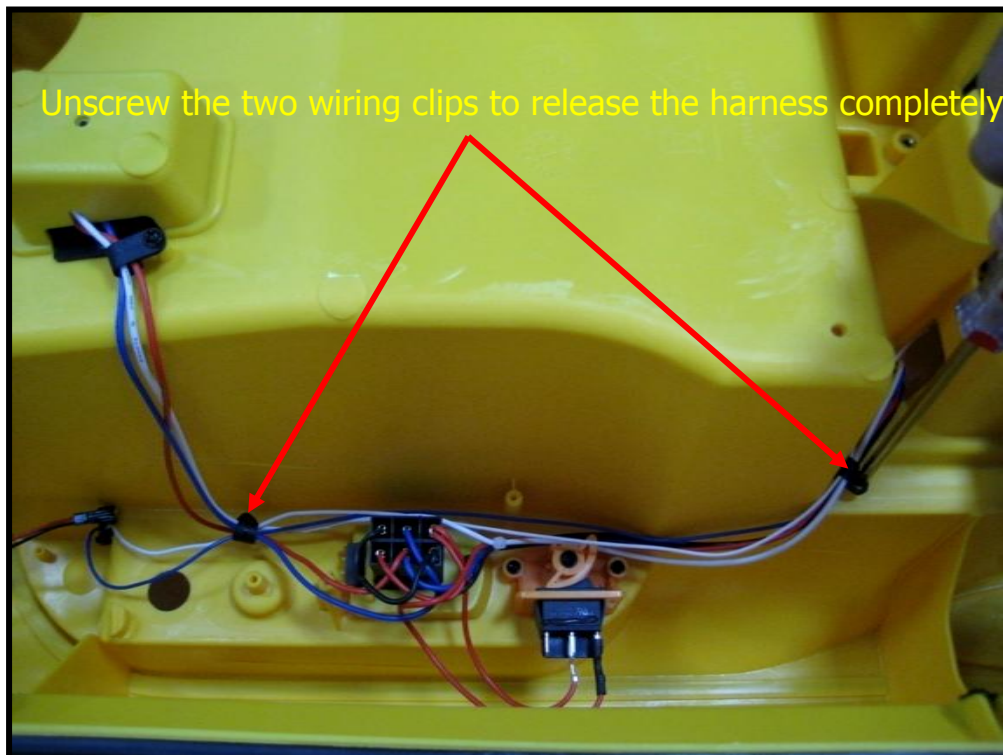
IV) Gearbox Replacement

Step (5)



Unplug the Headlights connector plugs located at middle of bottom side

Step (6)

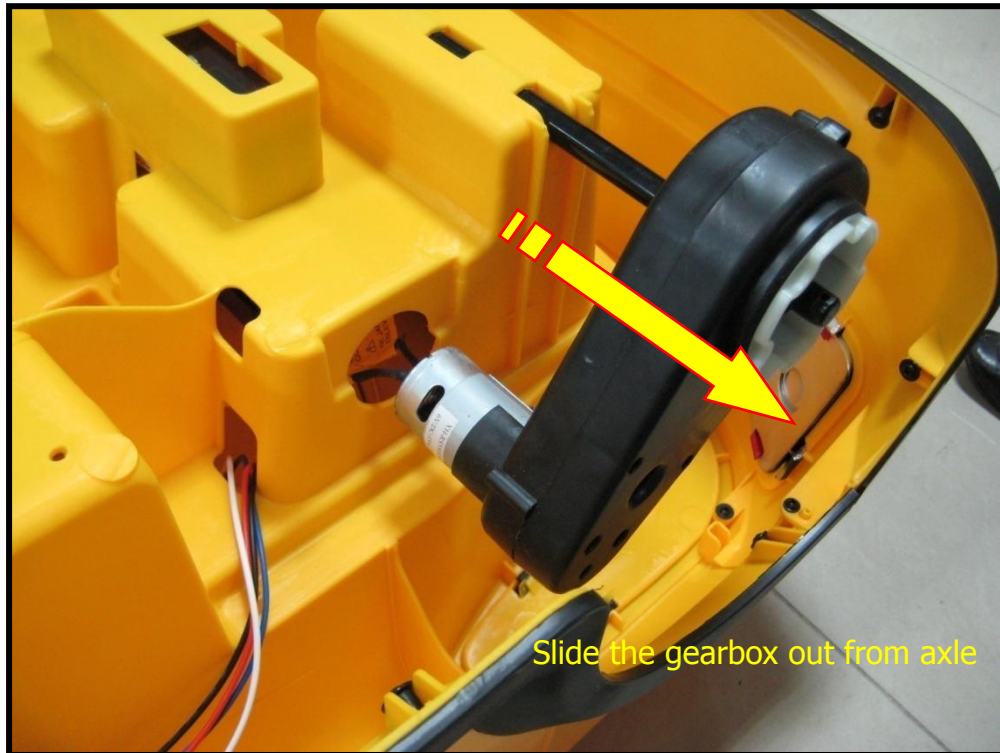


Customer Service Guide



IV) Gearbox Replacement

Step (7)



Slide the gearbox out from axle

Step (8)



Advance design for easy to replace the whole gearbox by simple steps now

Reverse above procedures to re-assemble back the vehicle

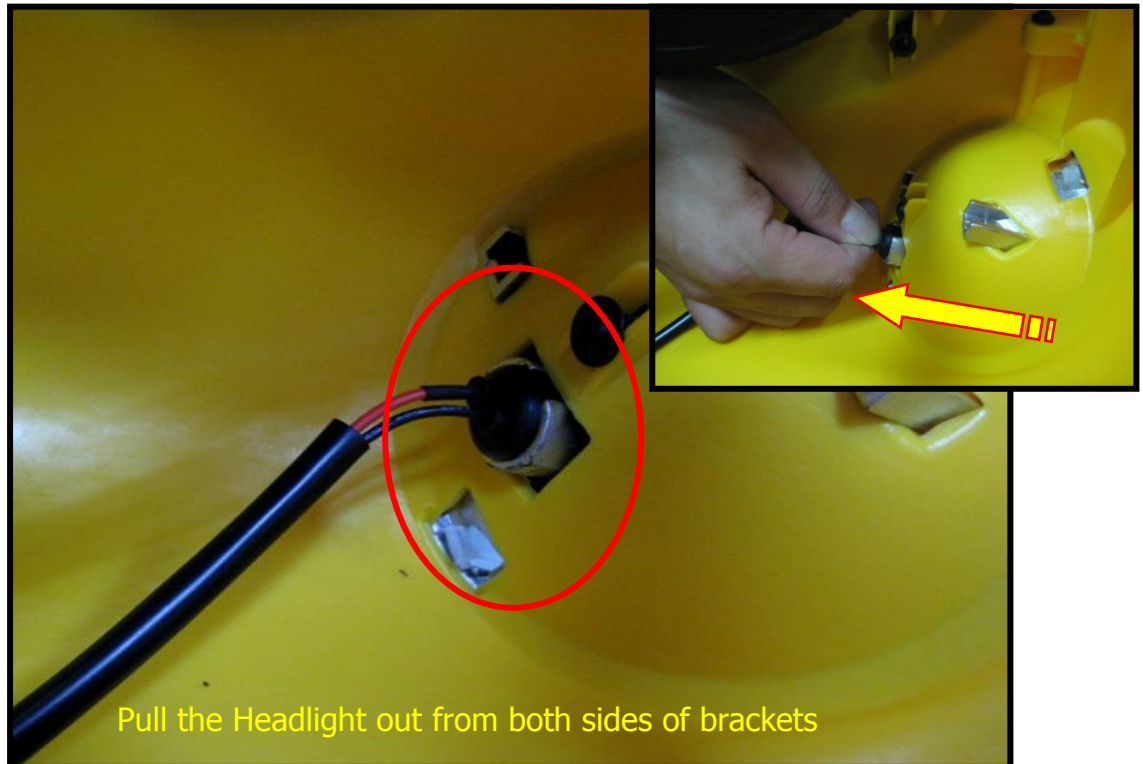
Customer Service Guide



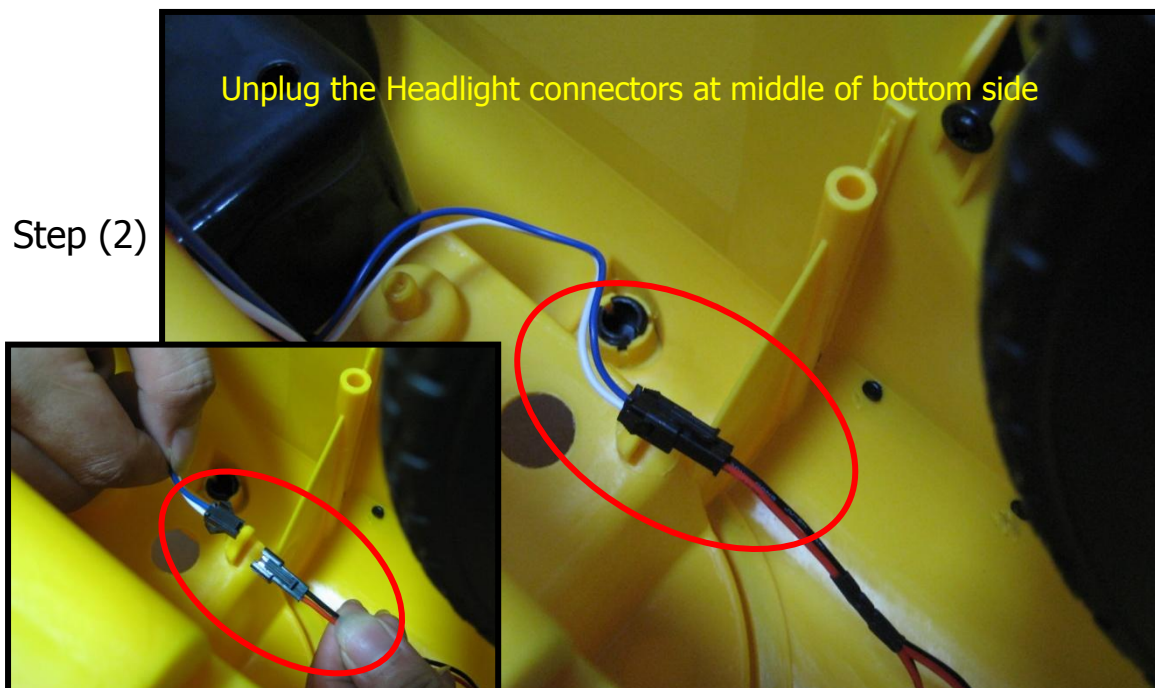
V) Headlights Replacement

Operation: Follow below procedures to remove and replace the Headlights assembly.

Step (1)



Step (2)

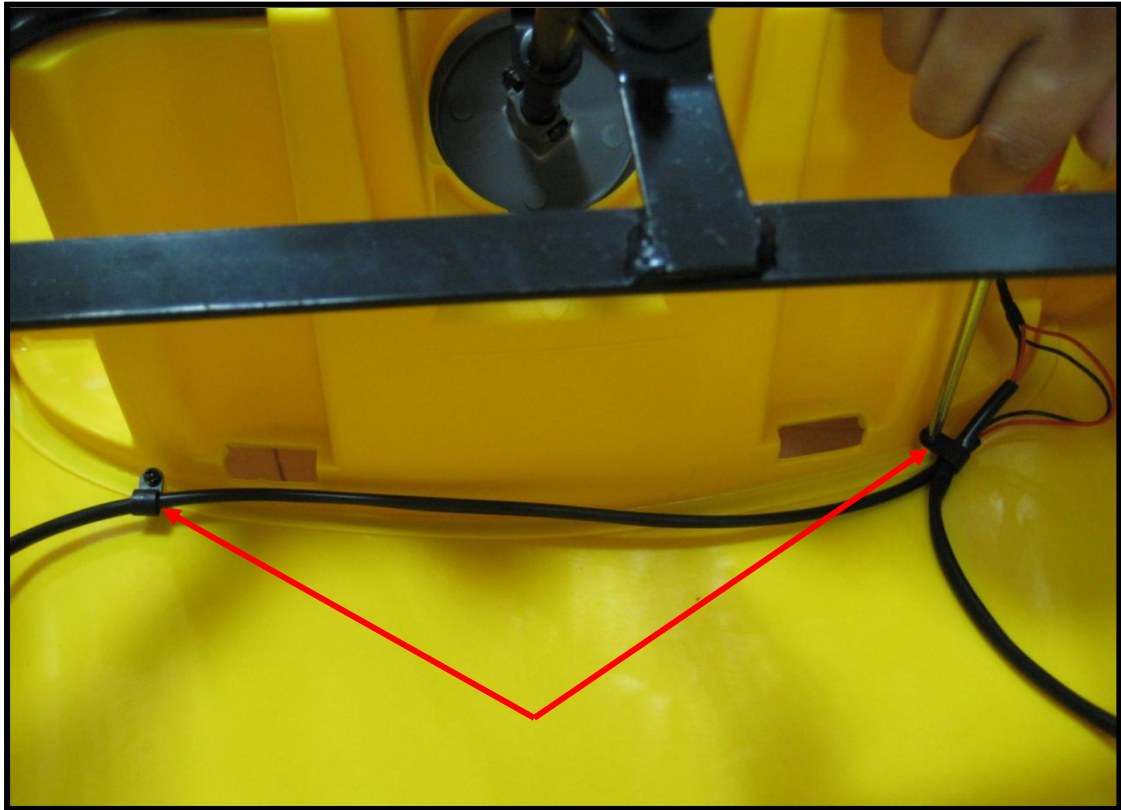


Customer Service Guide



V) Headlights Replacement

Step
(3)

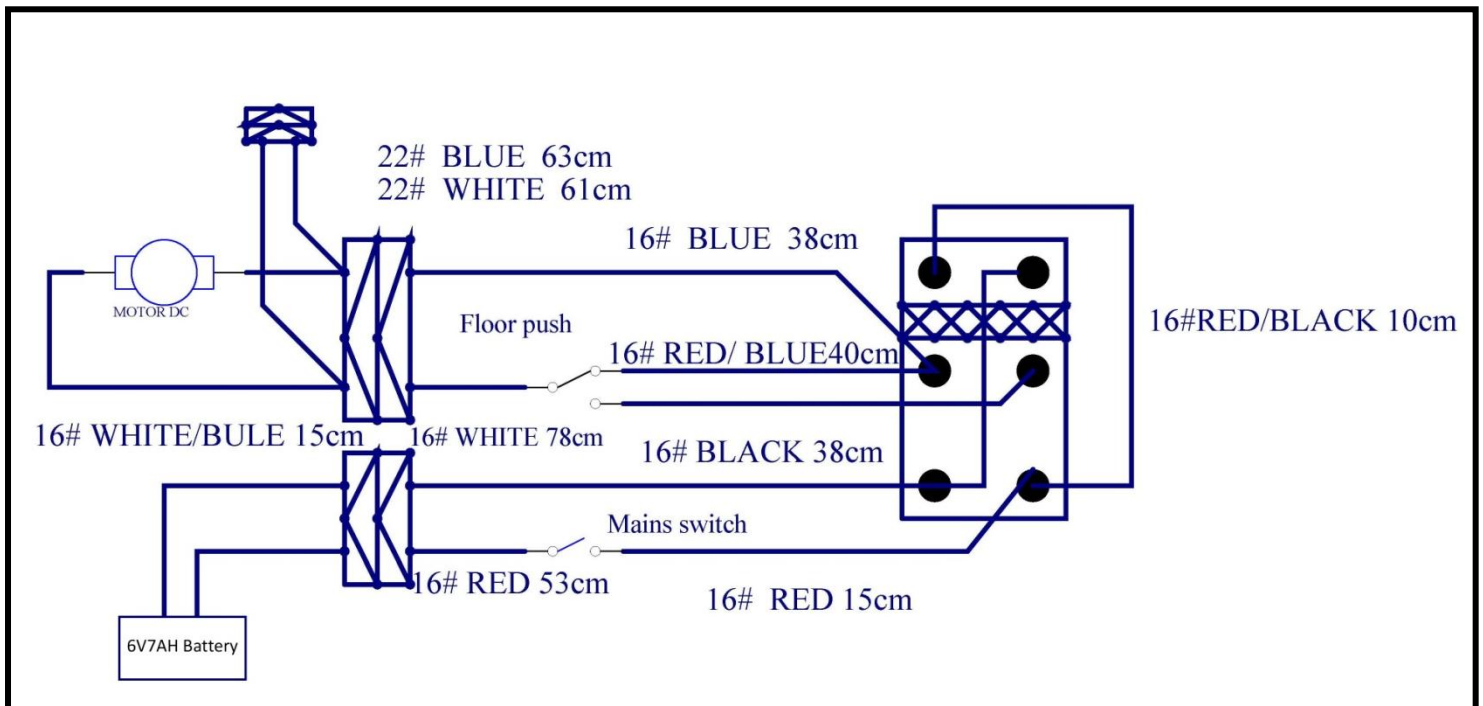


Unscrews two wiring clips to remove the Headlights Assembly

Customer Service Guide



VI) Wirings Schematic



Customer Service Guide



VII) Exploded View

