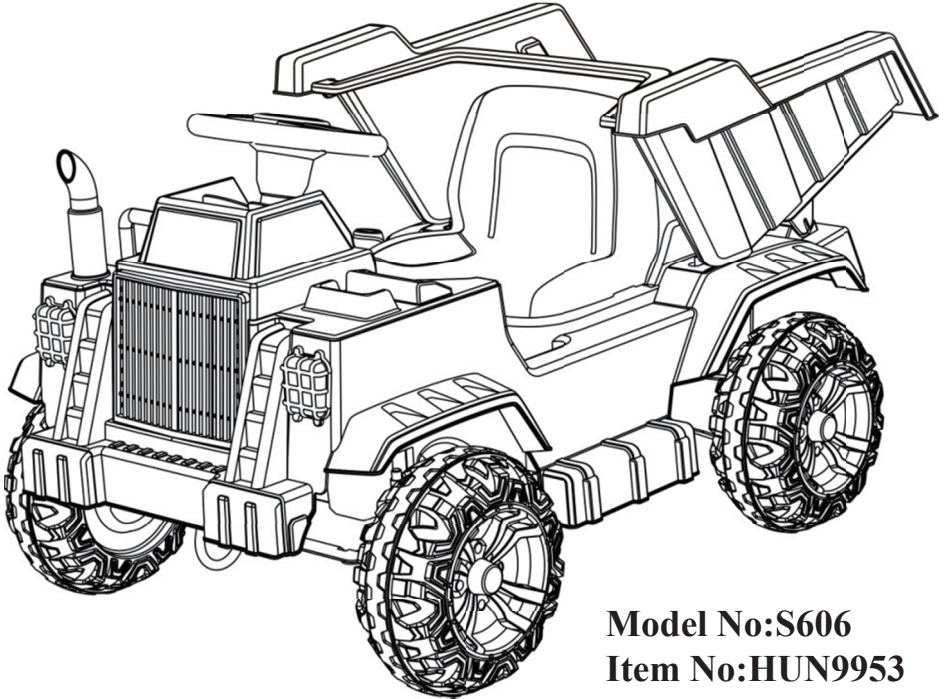


# Children's

## BATTERY OPERATED RIDE-ON



**Model No:S606**  
**Item No:HUN9953**

**Styles and colors may vary**

# OWNER'S MANUAL

## with Assembly Instructions

**Read and understand this entire manual before using!**

**Please keep this manual for future reference as it contains important information.**

**Before first time use, charge the battery for at least 8-12 hours.**

**FOR ANY PRODUCT ENQUIRIES OR ISSUES PLEASE CONTACT HUNTER PRODUCTS  
AT [WWW.ELECTRICRIDEON.COM.AU](http://WWW.ELECTRICRIDEON.COM.AU) OR TOLL FREE HELP LINE 1800 224 094.**

# 1. Specification

This ride-on will provide your child with many miles of riding of enjoyment. To help assure your child a safe ride we ask you to please read this manual carefully and keep it for future reference.

Suitable age	3+ years
Load Capacity	Under 30KG
Battery	12V4.5AH
Charger	12V1000mA(Linke/LKC-120100·S)
Charge time	8-12 hours
Size of car	108×64×59cm



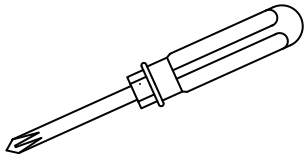
## BATTERY INFORMATION

- Non-rechargeable batteries are not to be recharged.
- Rechargeable batteries are only to be charged under adult supervision.
- Different types of batteries or new and used batteries are not to be mixed.
- Batteries are to be inserted with the correct polarity.
- Exhausted batteries are to be removed from the toy.
- The supply terminals are not to be short-circuited.

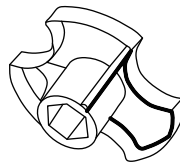
## 2. Parts List

Number	Name	Quantity	Remark
1	Car bucket	1	
2	Seat	1	
3	Steering wheel	1	screw nut has installed in the steering wheel
4	Chimney	1	
5	Front wheels	2	
6	Rear wheels	2	
7	Wheel cap	4	
8	Rear axle	1	
9	Driving motor	2	Left / Right
A	Ø10 nuts	4	Already installed on the front and rear axles
B	Ø10 washer	8-9	In the hardware pack. Note: there may be extra 1 or 2 pcs for spare.
C	M4×12 screw	8-9	In the hardware pack. Note: there may be extra 1 or 2 pcs for spare.
D	Cotter pin	1	In the hardware pack

✦ Assembly tools required



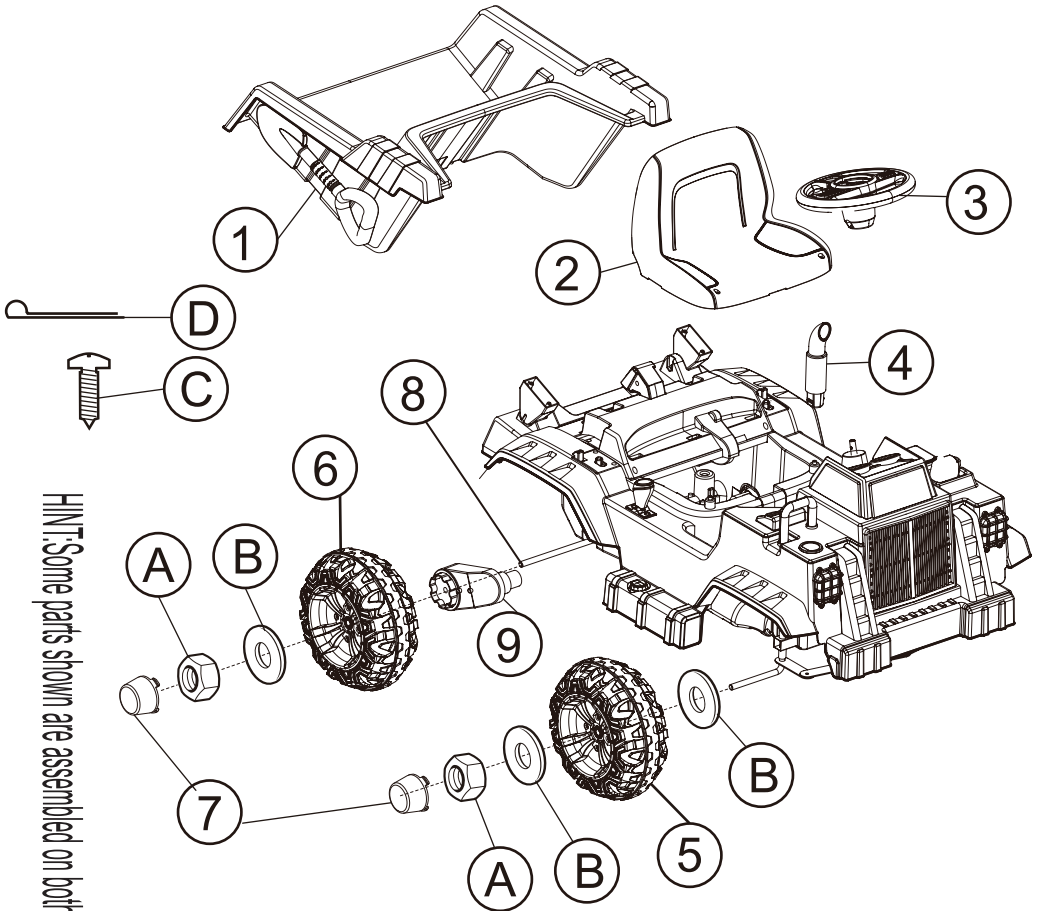
Screwdriver  
(not included)



Spanner  
( included)

**FOR ANY PRODUCT ENQUIRIES OR ISSUES PLEASE CONTACT HUNTER PRODUCTS  
AT [WWW.ELECTRICRIDEON.COM.AU](http://WWW.ELECTRICRIDEON.COM.AU) OR TOLL FREE HELP LINE 1800 224 094.**

# 3. Parts Diagram



HINT: Some parts shown are assembled on both sides of vehicle



## 4. Safety



### **PREVENT INJURIES AND DEATHS:**

- **NEVER LEAVE CHILD UNATTENDED. ADULT DIRECT SUPERVISION IS REQUIRED.** Always keep child in view when child is in vehicle.
- This toy should be used with caution since skill is required to avoid falls or collisions causing injury to the user or third parties.
- Protective equipment should be worn.
- Never use in roadways, near cars, on or near steep inclines or steps, swimming pools or other bodies of water.
- Always wear shoes, always sit on the seat.

**CHOKING HAZARD!** NOT suitable for children under 3 years.

### **● ADULT ASSEMBLY REQUIRED.**

### **Rules for Safe Riding**

- Keep children within Safe Riding Areas:

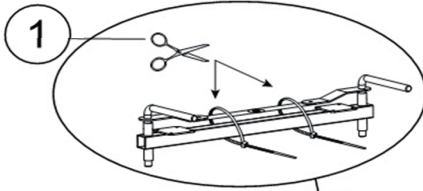
Never use in roadway near motor vehicles, on lawn space, on or near steep inclines or steps swimming pools or other bodies of water;

- Use the toy only on flat surfaces. Such as inside your house, garden or playground.
- Never use in the dark .A child could encounter unexpected obstacles and have an accident. Operate the vehicle only in the daytime or a well-lit area.
- It is prohibited to change the circuit or add other electric parts.
- Inspect wires and connections of the vehicle periodically.
- Do not let any child touch the wheels or be near them when the car is moving.
- This vehicle has adjustable play seat belts. Please instruct children how to tie the safety belt before using ;guarantee the security.
- This toy contains batteries that are non-replaceable.
- Warning. Not to be used in traffic.
- **WARNING:**It has the potential hazards of using the ride-on electric toy in areas other than private grounds.

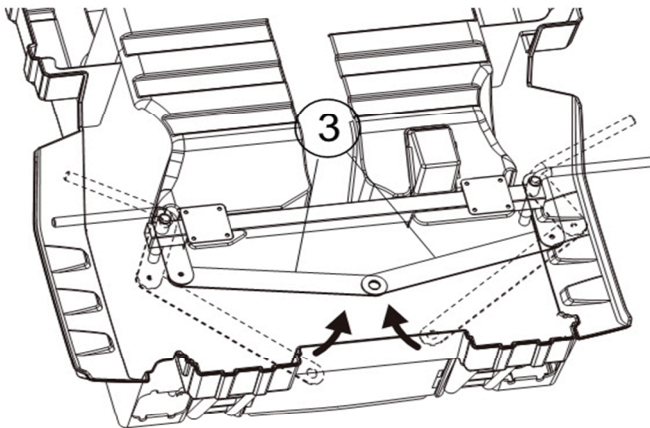
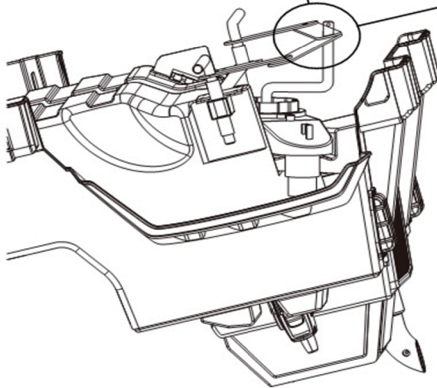
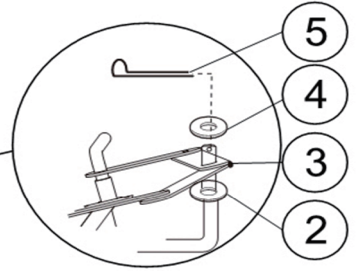
**FOR ANY PRODUCT ENQUIRIES OR ISSUES PLEASE CONTACT HUNTER PRODUCTS AT [WWW.ELECTRICRIDEON.COM.AU](http://WWW.ELECTRICRIDEON.COM.AU) OR TOLL FREE HELP LINE 1800 224 094.**

## 5.Operation Instruction

Scissors



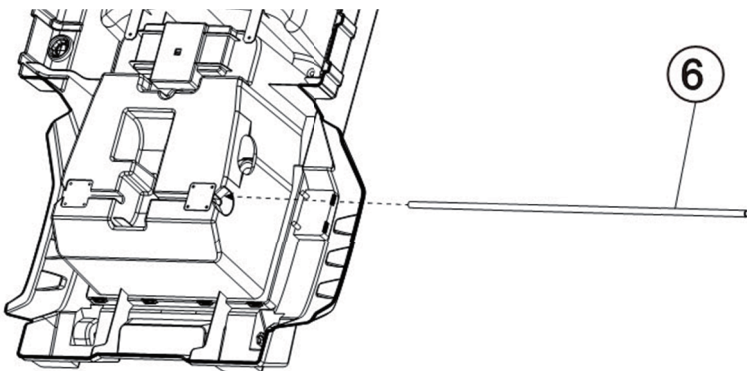
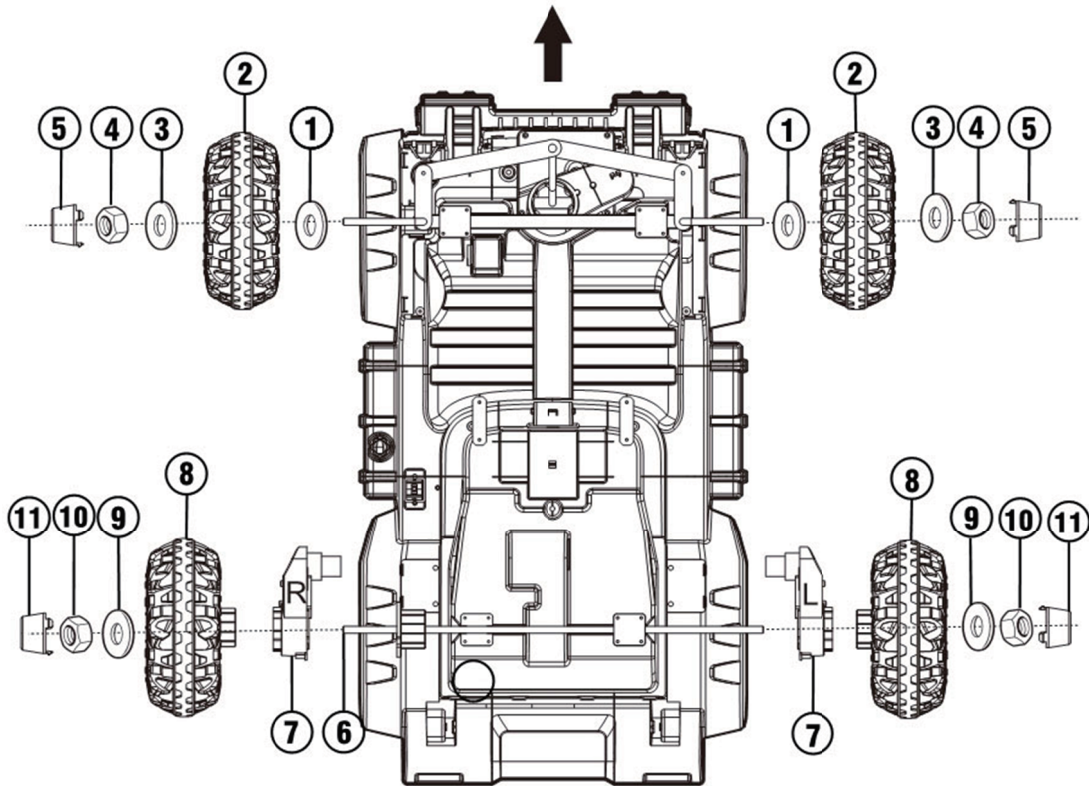
Cotter pin



**Turn the car upside down.**

- 1.Cut the tie with scissors
- 2.Insert  $\text{Ø}10$  washer into the steering rod
- 3.Insert the steering rod to the hole of front axle assmly.
- 4.Install  $\text{Ø}10$  washer into the steering rod
- 5.Fix the Cotter pin

## 6. Assembly Instruction



FOR ANY PRODUCT ENQUIRIES OR ISSUES PLEASE CONTACT HUNTER PRODUCTS AT [WWW.ELECTRICRIDEON.COM.AU](http://WWW.ELECTRICRIDEON.COM.AU) OR TOLL FREE HELP LINE 1800 224 094.

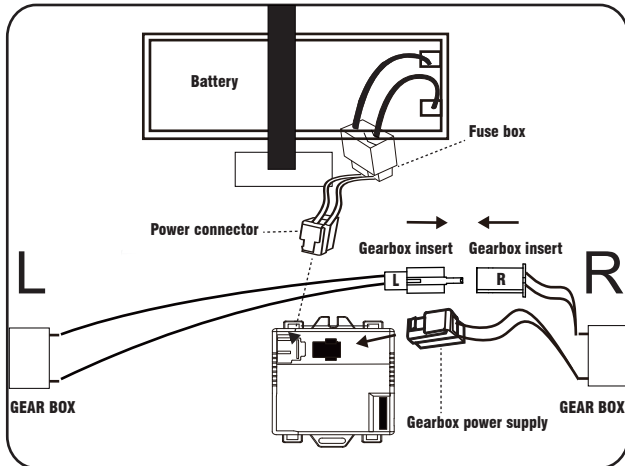
## 7. Assembly Instruction

Front wheels(non driving wheels)

- 1.Put an  $\varnothing 10$  washer into the front axle
  - 2.Install the front wheel
  - 3.Put another  $\varnothing 10$  washer
  - 4.Fixed with  $\Phi 10$  nuts
  - 5.Fasten the nut with spanner
  - 6.Install the wheel cap
- Repeat for the other side

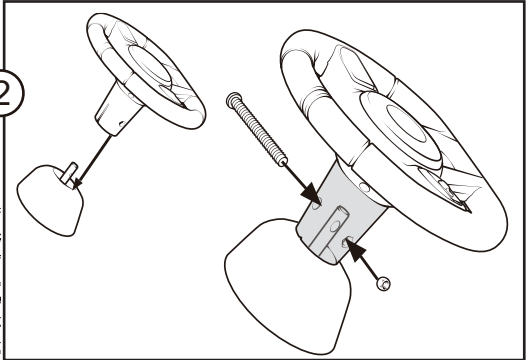
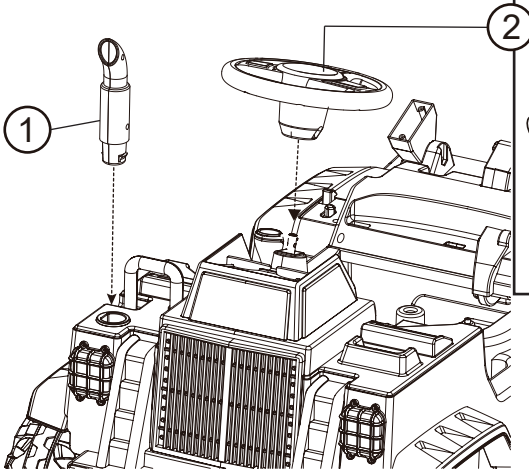
Rear wheels(driving wheels)

- 1.Put the rear axle in as shown;
- 2.Install the driving motor into the rear axle, connect the motor wire plug to the plug at the motor bayonet, snap the motor into the slot, and plug the wire into the receiver



- 3.Put the driving wheel on the rear axle and make sure the driving wheel snaps into the motor slot
  - 4.Put another  $\varnothing 10$  washer
  - 5.Fixed with  $\Phi 10$  nuts
- Repeat for the other side
- 6.Fasten the two sides nut with spanner
  - 7.Install the wheel cap

## 8. Assembly Instruction

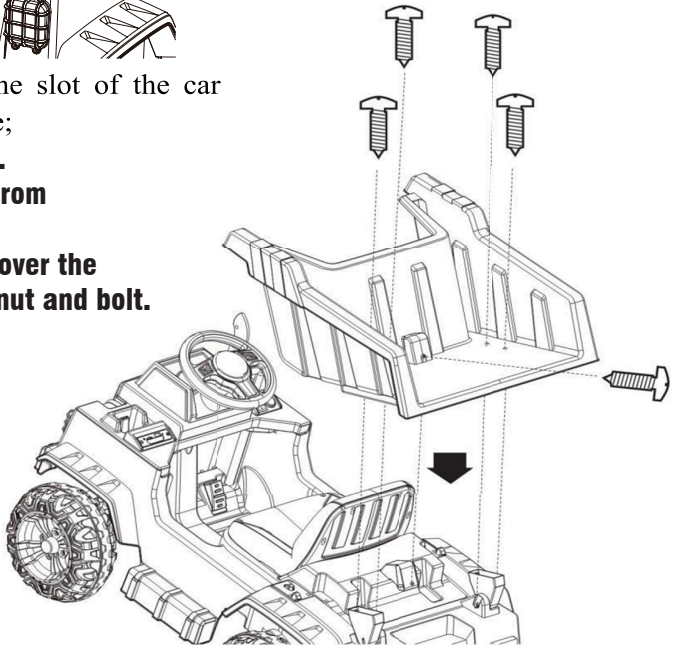


1. Insert the chimney into the slot of the car body, as shown in the picture;

2. **Attach the steering wheel.**

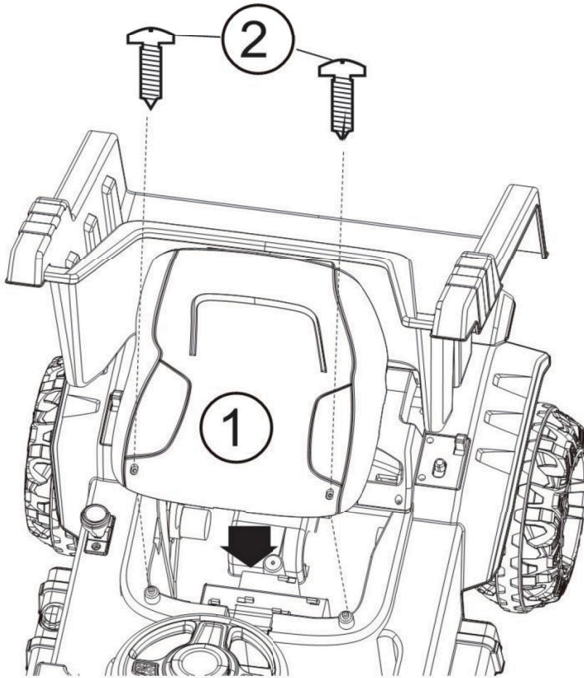
**Remove the nut and bolt from the steering wheel.**

**Insert the steering wheel over the steering and secure with nut and bolt.**



1. Insert the car bucket into the slot of the car body as shown in the picture; Fixed with M4\*12 screws;

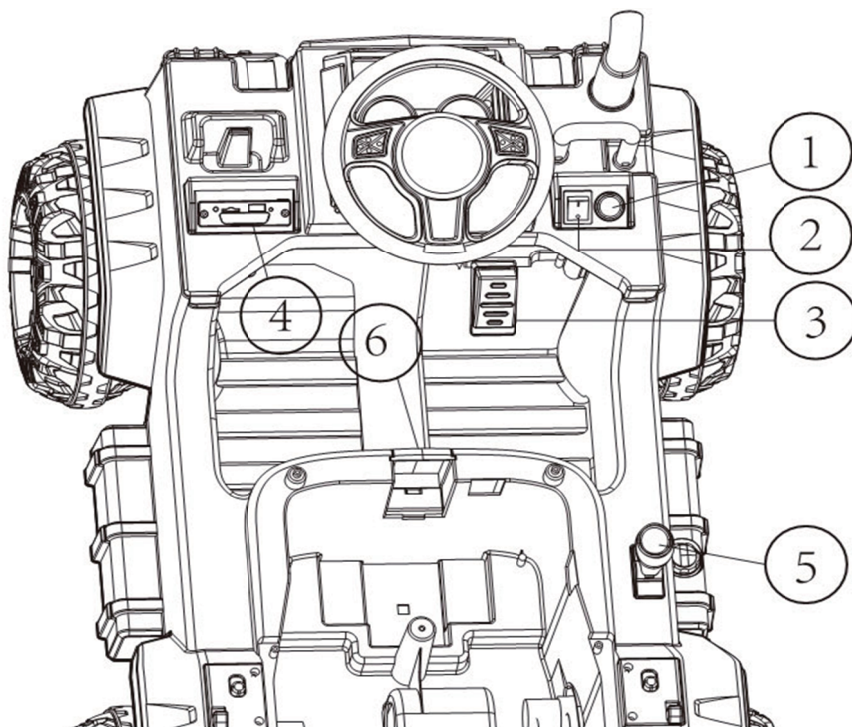
## 9. Assembly Instruction



1. Insert the seat into the car body;
2. Fixed with M4\*12 screws;



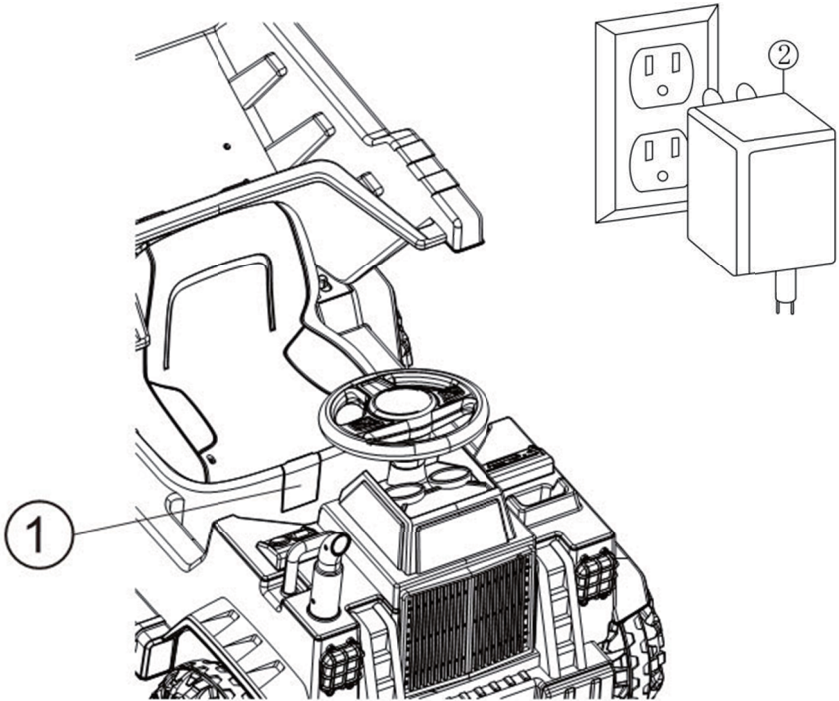
## 10. Operation Instruction



1. Power button: turn on or off the power
2. Forward/backward switch: control the moving direction, forward or backward
3. Pedal switch: step on the switch, the car moves, release and the car will brake slowly
4. Central control panel: N/A
5. Car bucket switch: control bucket to rise or fall;
6. Charging hole: the charger can be connected to charge the car (please read the instructions carefully before charging )

**IMPORTANT: Always stop the vehicle when changing the direction to avoid the damage the gear box and motor.**

## 11. Charge



1. Find the charging input socket below the seat
2. Plug the charger port into the input socket
3. Plug the charger plug into the wall outlet, the battery will begin charging

**WARNING: The vehicle will not work while charging, disconnect the charger from the vehicle before trying to operate. Only an adult can charge the battery!**



## 12. Charging

**ONLY AN ADULT CAN CHARGE AND RECHARGE THE BATTERY!**

**WARNING!**

● **PREVENT FIRE AND ELECTRIC SHOCK:**

- Use the only rechargeable battery and charger supplied with your vehicle. NEVER substitute the battery or charger with another brand. Using another battery or charger may cause a fire or explosion.
- Do not use the battery or charger for any other product. Overheating, fire or explosion could occur.
- NEVER modify the electric circuit system.. Tampering with the electric system may cause a shock, fire or explosion or my permanently damage the system.
- Do not allow direct contact between battery terminals. Fire or explosion can occur.
- Do not allow any type of liquid on the battery or its components.
- Explosive gasses are created during charging. Do not charge near or flammable materials. Charge the battery in a well-ventilated area ONLY.
- rechargeable batteries are only to be charged under adult supervision
- rechargeable batteries are to be removed from the toy before being charged

Must confirm before using that following work which is already finished: Important! Before using the vehicle for the first time, the battery needs to be charged for 8 to 12 hours, no more than 20 hours. Only an adult can charge and recharge the battery.

Check all the screws, cap nuts and protective coverings regularly and tighten as required.

Rules for Safe Riding

● Keep Children within safe riding areas:

Never use in roadway, near motor vehicles, on lawn space , on or near steep inclines or steps swimming pools or other bodies of water;

● Use the toy only on flat surfaces. Such as inside your house, garden or playground

● Never use in the dark. A child could encounter unexpected obstacles and have an accident. Operate the vehicles only in the daytime or well - lit area.

● It is prohibited to change the circuit or add other electric parts.

● Inspect wires and connections of the vehicle periodically

● Do not let any child touch the wheels or be near them when the car is moving.

## 13. Battery Replacement & Fuse

The battery features a thermal fuse with a reset fuse that will automatically trip and cut all power to the vehicle if the motor, electric system or battery is overloaded. The fuse will reset and power will be restored after the unit is turned OFF for 20 seconds and then turned ON again. If the thermal fuse trips repeatedly during normal use, the vehicle may need repair. From your distributor please to Hunter Products - [enquiries@hunterproducts.com.au](mailto:enquiries@hunterproducts.com.au)

To avoid losing power, follow these guidelines:

- Do not overload the vehicle.
- Do not tow anything behind the vehicle.
- Do not drive up steep slopes.
- Do not drive into fixed objects, which may cause the wheels to spin, causing the motor to overheat.
- Do not drive in very hot weather, components may overheat.
- Do not allow water or other liquids to come in contact with the battery or other electric components.
- Do not tamper with the electric system. Doing so may create a short, causing the fuse to trip.

### Battery Replacement and Disposal

The battery will eventually lose the ability to hold a charge . Depending on the amount of use, and varying conditions, the battery should operate for one to three years. Follow these steps to replace and dispose the battery:

1. Remove the car seat.
2. Disconnect the battery connectors.
3. Remove the battery bracket.
4. Remove the battery cover.
5. Carefully lift the battery.
  - Depending on the condition of the battery (i.e.: leakage) you may want to wear protective gloves before removal.
  - Do not lift the battery by its connectors or cables.
6. Place the dead battery in a plastic bag.

**Important!** Recycle the dead battery responsibly. The battery contains lead acid (electrolyte) and must be disposed of properly and legally. It is illegal in most areas to incinerate lead acid batteries or dispose of them in landfills. Take it to a federal or state-approved lead acid battery recycler, such as local automotive battery retailer.

Do not throw the battery away with your regular household waste!

7. Replace the battery and reconnect the connectors.
8. Replace the metal battery bracket.
9. Replace the seat.

**FOR ANY PRODUCT ENQUIRIES OR ISSUES PLEASE CONTACT HUNTER PRODUCTS AT [WWW.ELECTRICRIDEON.COM.AU](http://WWW.ELECTRICRIDEON.COM.AU) OR TOLL FREE HELP LINE 1800 224 094.**

## 14. Troubleshooting Guide

Problem	Possible Cause	Solution
Vehicle does not run	Battery low on power	Recharge battery.
	Thermal fuse has tripped	Reset fuse, see <Fuse>
	Battery connector or wires are loose	Check that the battery connectors are firmly plugged into each other. If wires are loose around the motor <i>from your distributor please to Hunter Products - enquiries@hunterproducts.com.au</i>
	Battery is dead	Replace battery, <i>from your distributor please to Hunter Products - enquiries@hunterproducts.com.au</i>
	Electrical system is damaged	<i>From your distributor please to Hunter Products - enquiries@hunterproducts.com.au</i>
	Motor is damaged	<i>From your distributor please to Hunter Products - enquiries@hunterproducts.com.au</i>
	Vehicle still connected to charger	Disconnect charger from vehicle before operating.
Vehicle does not run very long	Battery is under charged	Check that the battery connectors are firmly plugged into each other when recharging
	Battery is old	Replace battery, <i>from your distributor please to Hunter Products - enquiries@hunterproducts.com.au</i>
Vehicle runs sluggishly	Battery low on power	Recharge battery, <i>from your distributor please to Hunter Products - enquiries@hunterproducts.com.au</i>
	Battery is old	Replace battery, <i>from your distributor please to Hunter Products - enquiries@hunterproducts.com.au</i>
	Vehicle is overload	Reduce weight on vehicle. Maximum user weight is 30kg.
	Vehicle is being used in harsh conditions	Avoid using vehicle in harsh conditions, see <Safety>.
Vehicle needs a push to go forward	Poor contact of wires or connectors	Check that the battery connectors are firmly plugged into each other. If wires are loose around the motor, <i>from your distributor please to Hunter Products - enquiries@hunterproducts.com.au</i>
	“Dead Spot” on motor	A dead spot means the electric power is not being delivered to the terminal connection and the vehicle needs repair. <i>From your distributor please to Hunter Products - enquiries@hunterproducts.com.au</i>
Difficult shifting from forward to reverse or vice-versa	Attempting to shift while the vehicle is motion	Completely stop the vehicle and shift, see <Use Your Ride-On>
Loud grinding or clicking noises coming from motor or gear box	Motor or gears are damaged	<i>From your distributor please to Hunter Products - enquiries@hunterproducts.com.au</i>
Battery will not recharge	Battery connector or adapter connector is loose	Check that the battery connectors are firmly plugged into each other.
	Charger not plugged in	Check that the battery charger is plugged into a working wall outlet.
	Charger is not working	<i>From your distributor please to Hunter Products - enquiries@hunterproducts.com.au</i>
Charger feels warm when recharging	This is normal and not a cause for concern	

Completely read through this manual and the troubleshooting guide table before calling. If you still need help resolving the problem *From your distributor please to Hunter Products - enquiries@hunterproducts.com.au*.

FOR ANY PRODUCT ENQUIRIES OR ISSUES PLEASE CONTACT HUNTER PRODUCTS AT WWW.ELECTRICRIDEON.COM.AU OR TOLL FREE HELP LINE 1800 224 094.

## 15. Maintaining

- It is parents' responsibility to check main parts of the toy before using, Must regularly examine for potential hazard, such as the battery, charge, cable or cord, plug, screws are fastening enclosure of other parts and that in the event of such damage, the toy must not be used until that damage had been properly removed.
- Make sure the plastic parts of the vehicle are not cracked or broken.
- Occasionally use a lightweight oil to lubricate moving parts such as wheels.
- Park the vehicle indoors or cover it with a tarp to protect it from wet weather.
- Keep the vehicle away from sources of heat, such as stoves and heaters. Plastic parts may melt.
- Recharge the battery after each use. Only an adult can handle the battery. Recharge the battery at least once a month when the vehicle Raider is not being used.
- Do not wash the vehicle with a hose. Do not wash the vehicle with soap and water. Do not drive the vehicle in rainy or snowy weather. Water will damage the motor, electric system and battery.
- Clean the vehicle with a soft, dry cloth. To restore shine to plastic parts, use a non-wax furniture polish. Do not use car wax. Do not use abrasive cleaners.
- Do not drive the vehicle in loose dirt, sand or fine gravel which could damage the moving parts, motors or the electric system.
- When not using, all the electrical source should be turn off. Turn off the power switch and disconnect the battery connection.

Our goods come with guarantees that cannot be excluded under the Australian Consumer Law. You are entitled to a replacement or refund for a major failure and for compensation for any other reasonably foreseeable loss or damage. You are also entitled to have the goods repaired or replaced if the goods fail to be of acceptable quality and the failure does not amount to a major failure.

Where a failure does not amount to a major failure, we are entitled to choose between providing you with a repair, replacement or refund. To obtain compensation, you would need to provide documentary evidence of the loss or damage suffered, and documentary evidence that such loss or damage was a reasonably foreseeable consequence of a failure by us to comply with a consumer guarantee under the Australian Consumer Law. Such evidence may include photographs, statutory declarations, receipts or reports (e.g. from your doctor), depending on the loss or damage.

In addition to all rights and remedies to which you may be entitled under the Competition and Consumer Act 2010 (Commonwealth) and any other relevant legislation, the manufacturer warrants this product to be free from defects in materials or workmanship for a period as stated on the packaging from the date of purchase.

In order to claim under this warranty, you will need to bring the product to the store of purchase, along with proof of purchase (typically this will be a receipt). Any cost incurred by you in bringing the product to the service desk will be borne by you. We will then, at our option, either repair or replace the product, or refund your money and take back the product.

Our liability under this manufacturer's warranty is subject to us being satisfied that a defect was caused by defective workmanship or materials, and was not caused by or substantially contributed to by other factors, or circumstances beyond our control, including (but not limited to) defective installation, maintenance or repair, alteration or modification of the product in any manner not recommended by the manufacturer or any neglect, misuse or excessive use.

The benefits conferred by this manufacturer's warranty are in addition to all rights and remedies conveyed by the Competition and Consumer Act 2010 (Commonwealth), and any other statutory rights to which you may already be entitled, and this warranty does not exclude, restrict or modify any such rights or remedies that are implied by law.

## **HUNTER PRODUCTS**

**Level 2, 424 Warrigal Road Moorabbin 3189**

**Ph: 1800 224 094**

**Office hours: Monday to Friday 9am to 5pm AEST**

**Email: [enquiries@hunterproducts.com.au](mailto:enquiries@hunterproducts.com.au)**

20200828

**FOR ANY PRODUCT ENQUIRIES OR ISSUES PLEASE CONTACT HUNTER PRODUCTS AT [WWW.ELECTRICRIDEON.COM.AU](http://WWW.ELECTRICRIDEON.COM.AU) OR TOLL FREE HELP LINE 1800 224 094.**