



BMW R1200GS Motorcycle (W348) Customer Service Guide



Customer Service Guide



Contents

I) Check Battery	3
II) Check Wiring Condition	6
III) Windshield Replacement	9
IV) Gearbox Replacement	10
V) Warning Stickers	14
VI) Schematic diagram	17
VII) Exploded View	18

CAUTION :

Disconnect the battery before proceeding
with the following steps.

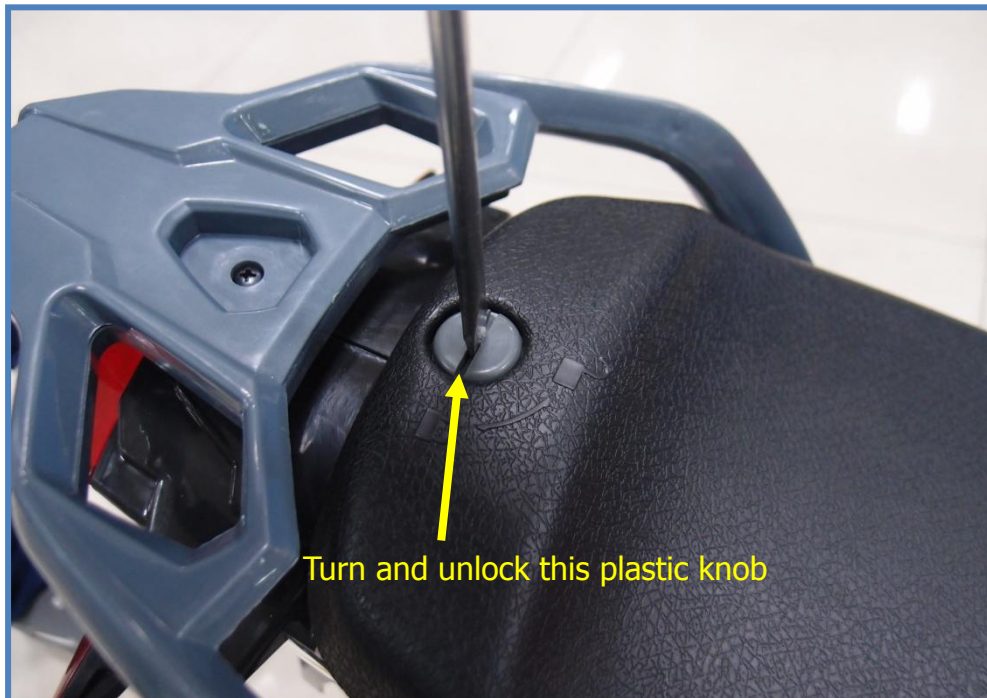
Customer Service Guide



I) Check Battery

Operation: Use a Flat head screwdriver to unlock and remove the seat. Locate the battery harness, unplug the connector, and then use a volt-meter to check the condition of the battery.

Step (1)



Step (2)

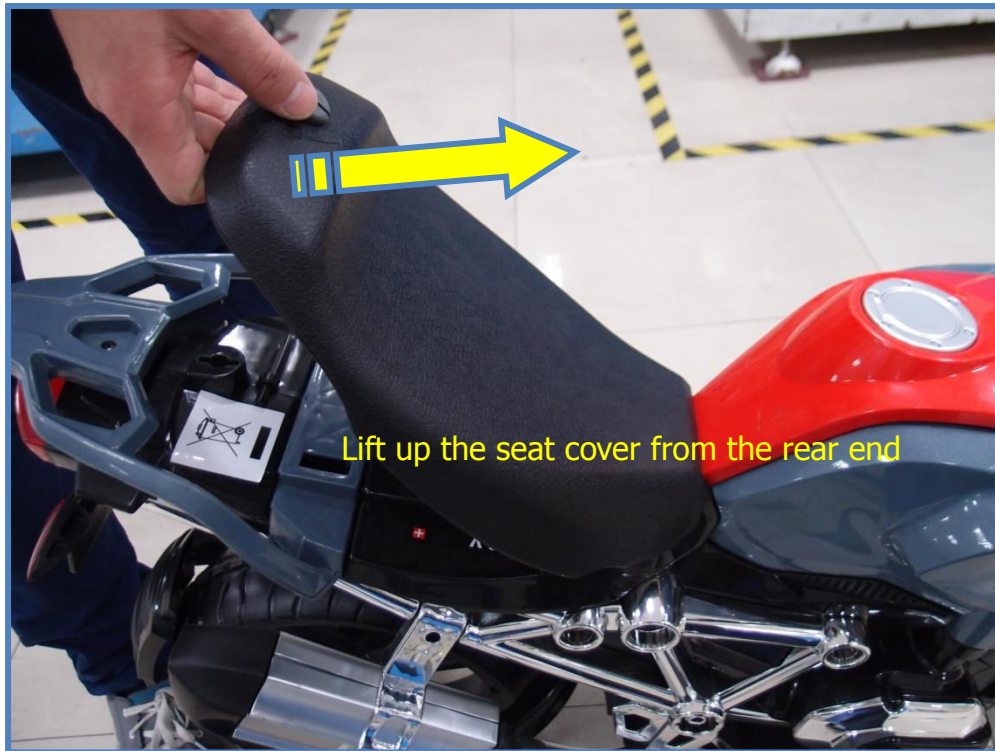


Customer Service Guide

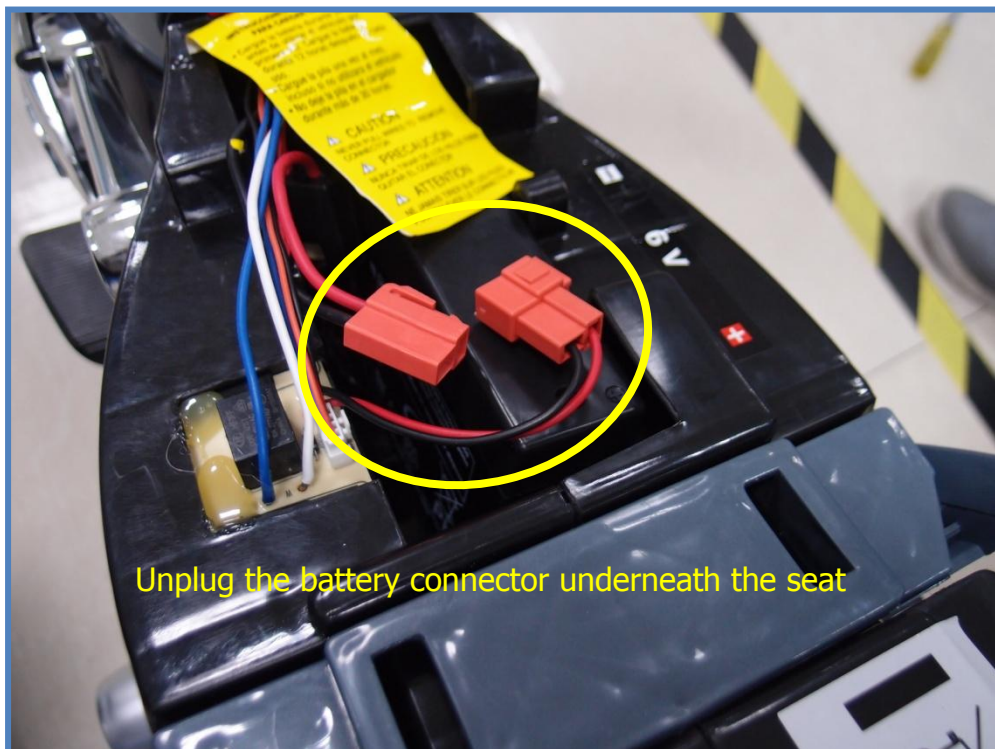


I) Check Battery

Step (3)



Step (4)



Customer Service Guide



I) Check Battery

Step
(5)



Reading Judgment: 6.0 V ~ 6.5 V – Good condition

5.6 V ~ 5.9 V – Recharge battery

5.5 V – Recharge battery. If after the stipulated recharging time the voltage has not increased, then replace the battery.

Below 5.5 V – Replace the battery.

Customer Service Guide



II) Check Wiring Connection

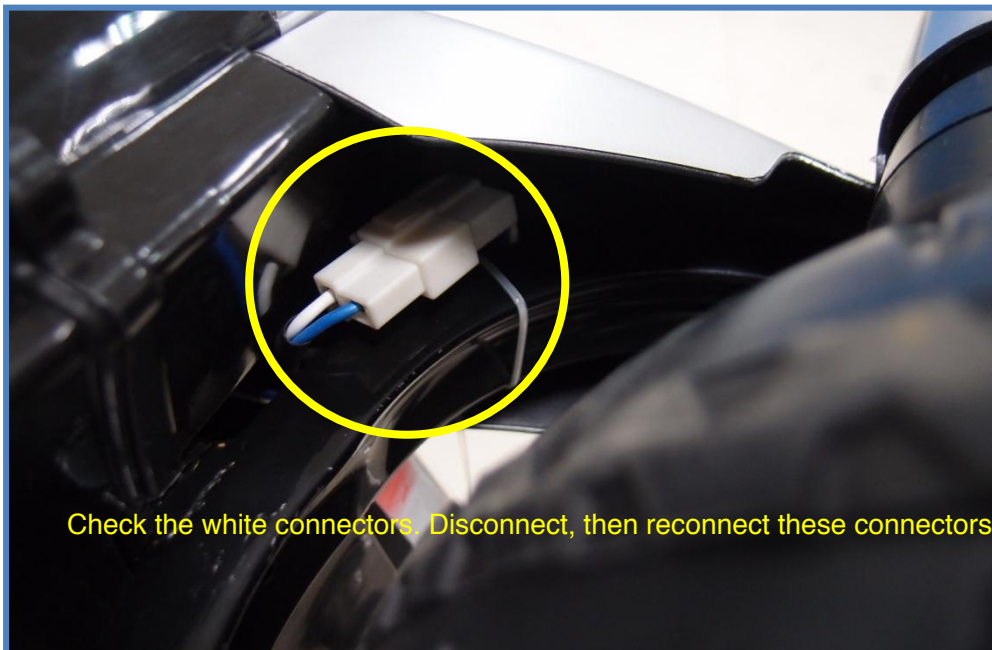
Operation: There are two wiring connections that should be checked.

A. Motor/Gearbox : Turn over the vehicle and locate the Gearbox harness at the bottom.

Step (1)



Step (2)



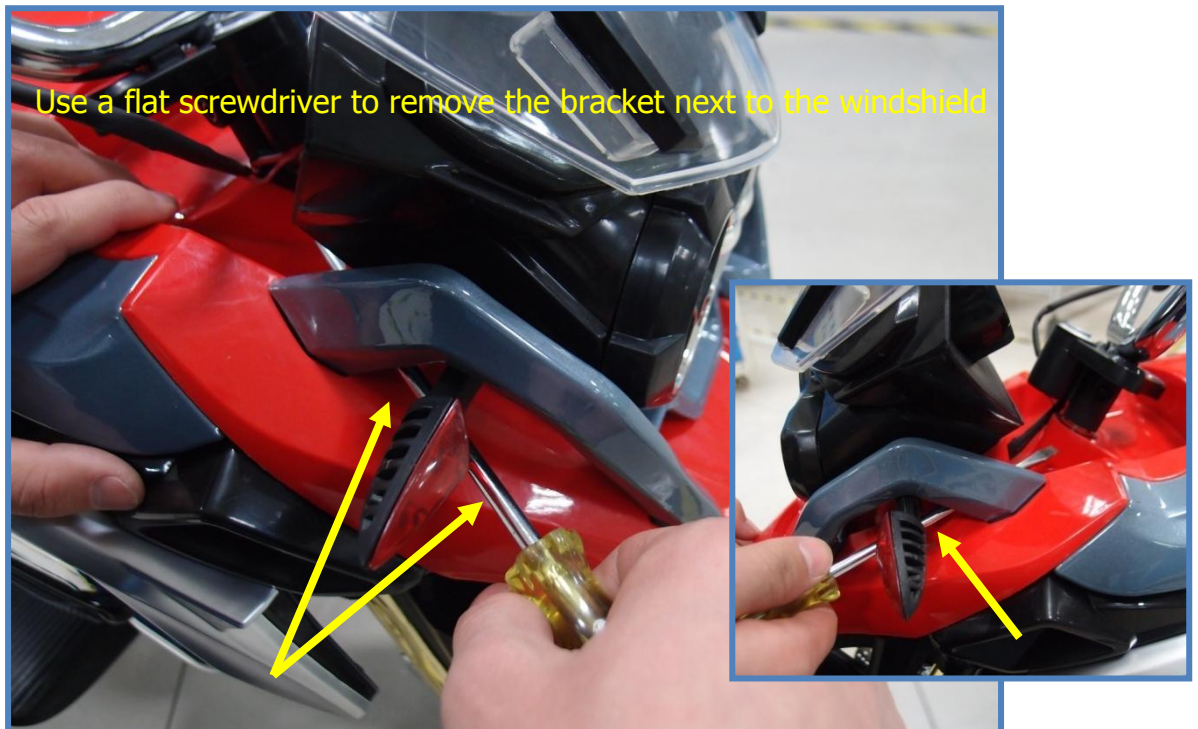
Customer Service Guide



II) Check Wiring Connection

B. Handlebar/Sounds : Disassemble the windshield and check the two connections per the below procedures.

Step (1)



Step (2)



Customer Service Guide



II) Check Wiring Connection

Step (3)



Step (4)



Reverse the above procedures to reassemble the vehicle.

Customer Service Guide



III) Windshield Replacement

Operation: Follow the procedure (IIb) to detach the windshield, and then unplug the two connectors to remove it completely for replacing.



Replace the Handlebar sub-assembly with a new one.

Reverse above procedures to re-assemble the vehicle

Customer Service Guide



IV) Gearbox Replacement

Operation: Follow below steps to replace the gearbox.

Step (1)



Step (2)



Customer Service Guide



IV) Gearbox Replacement

Step (3)



Step (4)



Customer Service Guide



IV) Gearbox Replacement

Step (5)



Step (6)



Customer Service Guide



IV) Gearbox Replacement

Step (7)



Step (8)

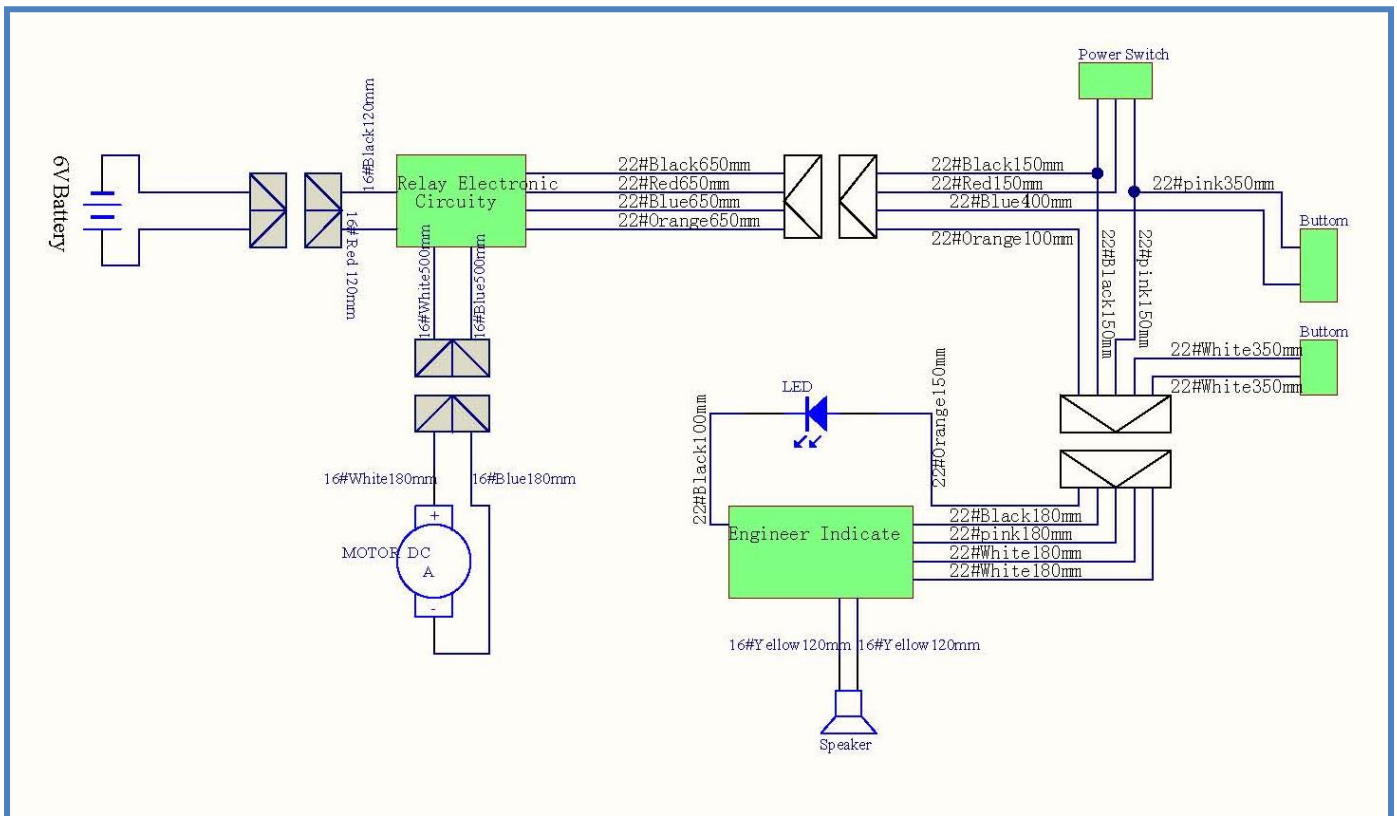


Reverse above procedures to re-assemble the vehicle

Customer Service Guide



VI) Wiring Schematic



Customer Service Guide



VII) Exploded View

